



PREMIUM LIST  
AND PROGRAM  
July 22 - 29, 2023

82ND ANNUAL  
CRAWFORD COUNTY  
**FAIR**  
OBLONG, ILLINOIS

**HAVE A  
GREAT**

*Fair week!*

**BOARD OF  
DIRECTORS**

**Justin Rich**  
President

**Les Dart**  
Vice President

**Robert York**  
Treasurer

**David Rains**  
Secretary

**Chuck Baker**  
**Dustin Clark**  
**Stanley Miller**  
**Travis Rich**  
**Steven Smith**  
**Chance Tuttle**

**Kourtney Mellendorf**  
Farm Bureau Manager

**Jennifer Smith**  
Ag Lit Coordinator

**BENEFITS & DISCOUNTS**

Ag in the Classroom

Young Leaders

Marketing • Legislation

FarmWeek • Scholarships

Peace of Mind Alert

Ford Bonus • Case IH Discounts

Prescription & Eye Care Discounts

Hotel & Car Rental Discounts

Air Evac Lifeteam Discount



**Crawford County Farm Bureau**  
1221 N Allen Street  
Robinson, IL 62454

**Phone:** 618-544-3792

**Email:** [crawfordfb@frontier.com](mailto:crawfordfb@frontier.com)



# 82nd Annual CRAWFORD COUNTY FAIR

Inflatables and Mechanical Bull Mon - Sat  
Magic at the Fair - performances Mon - Thurs

## Thursday, July 20

4-H All General Projects Judging – Registration begins at 4:30 p.m. and Judging at 5:00 p.m.

## Friday, July 21

Entries Can Be Made From 1:00 - 4:00 P.M. at Fair Office  
4-H Horse Show – 5:00p.m.  
All exhibitors should be signed in by 4:30 p.m.

## Saturday, July 22

Fair Office Opens for Entries - 8:00 A.M.  
Entries Must Be Started In Open Class By - 6:00 P.M.  
Open Halter Western Youth Show - 10:00 A.M.  
Floral Hall will be open to accept exhibits from 8:00 A.M. - 6:00 P.M.  
Queen and Little Miss Pageant - 7:00P.M.  
Tickets: \$10.00 Adult - \$5.00 Child 6 - 12

## Sunday, July 23

Floral Hall open to accept entries 8:00 A.M. - 2:00 P.M.  
Floral Hall Exhibits Must In Place By - 2:00 P.M.  
Judging Of Floral Hall Exhibits Will Follow  
4- H Poultry Judging - 2:30P.M.  
Open Poultry Show Sunday, July 23 after 4-H  
4-H Dog Show - Show Arena - 5:00 P.M.  
Western Halter Class - 1:00 P.M. - Free Admission  
Gospel Show - free will offering - 7:00 P.M..  
Williamson Branch

## Monday, July 24

4-H Swine Judging - 9:00 A.M.  
4-H Tractor Driving - 3:00P.M.  
4-H Rabbit Show -(Show Ring) 3:00 P.M.  
Rabbit and Pig Scramble 7:00 P.M.  
Scramble entries close at 6:00 P.M..  
Tickets: \$10.00 Adult - \$5.00 - Child 6 - 12

## Tuesday, July 25

4-H Dairy Judging - 7:30 A.M.  
Open Dairy Judging - after 4-H Dairy Judging.  
4-H Sheep Show - 9:00 A.M.  
4-H Goat Show – (directly following the sheep show)  
Open Goat and Wether Judging After 4-H  
Open Sheep Judging - after 4-H judging.  
Rabbit Show Judging - 10:00 A.M.  
Swine Show Judging - 4:00 P.M.  
Weigh-in at fairgrounds 5:00 - 7:00 P.M.  
Truck Pull - 7:00 P.M.  
Tickets: \$15.00 Adult - \$5.00 Child 6 - 12

## Wednesday, July 26

4-H Beef Heifer & Steer Judging - 9:00 A.M.  
Jr. Beef Show After 4-H Judging  
Open Beef Show - after Jr. Show  
4-H Master Showmanship - 3:00 P.M.  
Go Kart Racing - 7:00 P.M.  
Tickets: \$15.00 Adult - \$5.00 Child 6 - 12

## Thursday, July 27

Auction Set up – 9:00 a.m.  
Livestock Auction – 1:00p.m. \*\*  
T&A Bucking Bulls Rodeo - 7: P.M.  
Tickets: \$15.00 Adult - \$5.00 Child 6 - 12

## Friday, July 28

Release Grange Hall Exhibits - 12:00 P.M.  
Premium Payment - 12:00 P.M.  
Power Wheels - Demo - 6:00P.M.  
Demo Derby - 7:00 P.M. Mini Truck Team, Bone Stock, Compacts, Chain and Wire, Stock and Mod Mowers  
Demo Entries close - 6:00 P.M.  
Tickets: \$15.00 Adult - \$5.00 Child 6 - 12

## Saturday, July 29

Open Meat Goat Show-weigh-in 8:00 A.M.  
Judging 10:00 A.M.  
Demo Derby - 7:00 P.M.  
Mini Truck Team Feature, Mod Trucks, Powder Puff, Mod Cars, Mini Truck one and done  
Demo Entries close - 6:00 P.M.  
Tickets: \$15.00 Adult - \$5.00 Child 6 - 12

## **LIST OF ADVERTISERS**

Adams Memorials	39	First Financial Bank	34	Oblong Antique Tractor & Engine	51
Bailey's Travel	32	First National Bank in Olney	40	Oblong Chamber of Commerce	6
Beck's Seed	29	First Robinson Savings Bank	27	Oblong Masonic Lodge	7
Bradford Supply Co.	31	Flat Rock Telephone	47	Palestine Chamber of Commerce	15
Bunker Hill Supply	30	Goodwine Funeral Homes	63	Palestine Insurance Agency Inc.	53
Bush Garage and Machine Shop	60	Hershey Chocolate	17	Pump Repair Specialist Inc	44
Casey State Bank	13	Hoagland Chiropractic	18	Pulliam Funeral Homes	11
Charley Inc.	21	J. D. Mullen Company	37	Rust Nail Hardware	62
Crawford County Farm Bureau	Cover	Kemper CPA Group	20	Shook's Wrecker Service	52
Crawford County Insurance	43	Lawrence Gravel, Inc.	Back Cover	Smithenry Construction	57
Crawford County Real Estate, Inc	8	Lee Kintner & Sons	49	Superior Welding	14
Crawford County Title Company	46	Lincoln Land Energy	23	T-Graphics	35
Crawford Memorial Hospital	36	Maus Well Service	16	United Life Care	24
Earl Deckard	48	Monical's Pizza	26	Weber Insurance and Reality	22
Effingham Equity	42	Mont Eagle Mills	54	Weger Farms	41
				Xceleration Ag LLC	38

### **The Crawford County Fair Association**

Would like to thank the following businesses and foundations for their support

Marathon Petroleum - Illinois Refining Division	Mary Heath Morris Foundation
Crawford County Farm Bureau	United Lifecare Ambulance Service
Claypool Foundation	Crawford County Sheriff Department
Oblong Public Works Department	Oblong Fire Department
Oblong Police Department	

The Crawford County Fair would like recognize  
Corporate Sponsors

Beck's Seed	Jayne Excavating
Bradford Supply	Lincolnland Energy
Casey State Bank	Monical's Pizza
Crawford Memorial Hospital	Maus's Well Service
DK Tanks	Mont Eagle Mills
Effingham Equity	Oblong Masonic Lodge
First Financial Bank	Palestine Insurance Agency Inc.
First National Bank in Olney	Pump Repair Specialist Inc
First Robinson Savings Bank	Tri State Machine
Hershey Chocolate	Weger Farms
	Xceleration Ag LLC

Officers, Directors, Superintendents	6	CLASS O – Dairy, Apiary, Culinary	33
Admission and Ticket Information	7	CLASS P – Jr. Show - Crafts	34
Announcements, Rules and Regulations, etc.	7	CLASS U – Goats	44
State Health Department Rules	9	CLASS U2 – Meatgoat	45
Illinois Livestock Exhibition Requirements	9	CLASS Q-1 – Tractor Pull	42
CLASS A – Beef Cattle	13	CLASS R-1 – Jr. Western	43
CLASS B – Dairy Cattle	14	CLASS R-2 – Western Saddle Horses	44
CLASS F – Sheep	17	Class Z – Rodeo	65
CLASS G - Swine	18	4-H CLUB SHOW	66
CLASS H – Junior Department Livestock	19	Demolition Derby	45
CLASS I-1 – Rabbits	20	Lawn Mower Derby	60
CLASS I-2 – Poultry	21	Queen Pageant	64
CLASS J – Agricultural Products	23	Scramble	45
CLASS L – Floriculture	25	Power Wheels	61
CLASS M – Textiles and Fine Arts	28	Go -Kart Racing	63

2022  
MISS CRAWFORD COUNTY FAIR



**SHARA COFFMAN**

**OFFICERS**

Fair Phone: 618-592-4121

Information Before July 1, 618-553-2079

Visit web site at - [www.crawfordfair.com](http://www.crawfordfair.com)

e-mail: [secretary@crawfordfair.com](mailto:secretary@crawfordfair.com)

Erica Hatfield, President, Ph. 554-0922      Matrtinsville, IL  
 Ethan Sholders V-President, Ph. 554-2766      Oblong, IL  
 Joe Stephenson, Secretary - Treasurer Ph. 553-2079      Oblong, IL

**DIRECTORS**

Charles Baker, Director, Ph 592-3240	Oblong, IL
Bob Hall, Vendors, Ph. 544-9069	Oblong, IL
Jacob Wartsbaugh, Director, Ph. 562-0455	Oblong, IL
Bob Harris, Director, Ph. 592-3406	Oblong, IL
Brett Neely, Truck - Tractor, Ph. 592-6148	Oblong, IL
Scott Wolf, Director, Ph. 217-822-0209	Robinson, IL
Arthur Baker, Director, Ph. 553-4342	Robinson, IL
Michelle Wagner, Dairy Cattle, Ph. 217-232-2246	Newton, IL
Travis Miller, Beef Cattle, Ph. 553-7102	Oblong, IL
KelbyEubank, Beef Cattle, Ph. 553-1629	Oblong, IL
Vance Dart, Director, Ph. 554-4606	Oblong, IL
Kelly Wells, Poultry, Ph. 554-2475	Oblong, IL
Eric Wells, Director, Ph. 592-4669	Oblong, IL
J.D. Sharrett, Rabbits, Ph. 553-8889	Oblong, IL
Mike Brown, Go-Karts, Ph. 562-7127	Oblong, IL
Dale Davis, Floral, Ph. 592-3883	Oblong, IL
Marcie Pinkston, Jr.- Craft, Ph. 616-0921	Oblong, IL
Cassy Hook, Western Jr. Youth, Ph. 553-9258	Robinson, IL
Lauren Gullett, Western Jr. Youth, Ph. 562-0604	Robinson, IL
Laci Pethtel, Sheep, Western, Ph. 553-8431	Robinson, IL
Brandon Littlejohn, Director, Ph. 553-1270	Oblong, IL
Ed Mikeworth, Goats, Ph. 553-8938	Flat rock, IL
Kaleigh White, Queen, Ph. 554-4344	Robinson, IL
Michelle Weger, Queen, Ph. 554-0562	Robinson, IL
Angie Shook Power Wheels, Ph. 562-6938	Oblong, IL
Austin Adams, Camping Ph. 5562-9908	Oblong, IL
Travis Lewis, Directo, Ph. 554-3822	Robinson, IL
B.J. Osborn, Director, Ph. 562-4808	Robinson, IL
Rodney Shook, Demo Derby, Ph. 421-2938	Oblong, IL
Brady Hall, Gospel Show, Ph. 421-8255	Oblong, IL
Terry Ochs, Director, Ph. 562-4282	Oblong, IL
Erica Hatfield, Swine, Ph. 554-0922	Martinsville, IL
Eddie Robb, Director, Ph. 843-8268	Oblong, IL
James Mnahart, Director Ph. 562-2474	Oblong, IL
April Knoblett, 4-H Coordinator, Ph. 554-6569	Palestine, IL
Jake Draves, Director, Ph. 554-3500	Oblong, IL
Elija Plummer, Rodeo, Ph. 553-0143	Robinson, IL
Brandon Williams, Rodeo, Ph. 562-3907	Robinson, IL
Garrison Weck, Sound, Ph. 553-9855	Palestine, IL
Trevor Shook, Director, Ph. 562-4578	Oblong, IL
Johnathan Staley, Swine, Ph. 544-3243	Oblong, IL
Sarah Poehler, Director, Ph. 553-8117	Oblong, IL
Tavis Lewis, Director, Ph. Ph. 544-3288	Oblong, IL



**OBLONG'S ANNUAL**  
**FALL FOLLIES**  
 "HOME OF ILLINOIS' LARGEST NIGHTTIME PARADE"  
 SPOOKTACTULAR BAND FESTIVAL    CRAFT AND FOOD BOOTHS    ENTERTAINMENT  
**LAST SATURDAY IN OCTOBER**  
**57<sup>th</sup> Anniversary**  
**October 28, 2023**  
 Come and Celebrate with Us.  
 Oblong, Illinois 62449  
[www.theonlyoblong.com](http://www.theonlyoblong.com)  
[info@theonlyoblong.com](mailto:info@theonlyoblong.com)  
**The Only Oblong Where Ideas Begin**

---

*Enjoy*  
**\$5.00 off**  
 any purchase of \$10.00 or more  
 Good at any participating  
 Oblong Chamber of Commerce Member  
 Expires 7/31/2023

**CAMPING:**  
**\$125.00 for the week or \$25.00 per day**  
**Reserved till July 15, 2023 for 2022 campers.**  
**Contact : Austin Adams Ph. 618-562-9908**

Oblong City Lodge #644  
A.F. & A.M.



Ask One to be One  
[facebook.com/OblongCityLodge644](https://facebook.com/OblongCityLodge644)



**Shriners  
Hospitals  
For  
Children**



### ADMISSION PRICES

Saturday	\$10.00 Adult, \$5.00 - Child 6-12
Sunday	Free will offering
Monday	\$10.00 - Adult, \$5.00 - Child 6-12
Tuesday	\$15.00 - Adult, \$5.00 - Child 6-12
Wednesday	\$15.00 - Adult, \$5.00 - Child 6-12
Thursday	\$15.00 - Adult, \$5.00 - Child 6-12
Friday	\$15.00 - Adult, \$5.00 - Child 6-12
Saturday	\$15.00 - Adult, \$5.00 - Child 6-12

### Box Seats **\$175.00 - For All Week**

(4 Seats) - Eight Performances.

Reserved until 6:00 p.m.

Saturday July 22, 2023 For Last Year Holders

No charge to enter fairgrounds

### ANNOUNCEMENTS TO EXHIBITORS

The management of the Crawford County Fair desires to extend a most hearty welcome to all exhibitors who plan to exhibit in the fair this year. Without your exhibits and the attendance of the public to see them, it would be impossible to hold this and succeeding fairs.

All livestock open to the state of Illinois except poultry and rabbits.

Everything will be done to make your visit with us a happy one.

The Fair Board, which furnishes this catalog, is especially grateful to the advertisers who have made this premium list possible. We urge the patrons of the fair to remember these advertisers when they need the services of professional men and women.

### IMPORTANT NOTICE FOR LIVESTOCK EXHIBITORS

All purebred livestock that is showing in the open show must have registration papers. No one will be permitted to exhibit in the open show without registration papers. The name of the exhibitor does not have to be the name that is on the registration papers. Herdsman papers will not be accepted.

### Rules and Regulations Exhibitors

Exhibitors will please observe the following:

1. Read the list.
2. Decide on the entries to be made and make a memorandum of the articles in the same order as they are found in the list.
3. Do not ask to make entries after closing date and make your entries the week before the Fair if possible. No stalls will be reserved until paid for.
4. Entries are to be made on or before 6 p.m. Saturday, July 22, 2023. Entries can be made by calling, e-mail or by mail, to the Secretary. Tag your entries as numbered. It is the exhibitor's job to see that his exhibits are properly entered. Where an exhibitor makes a wrong entry in article or class, he loses the entry fee paid, but can make proper entry after satisfying the superintendent in charge before show takes place. All articles for exhibition must be accompanied by owner or his representative; the Fair will accept none by mail or express. You can also e-mail entries using the forms on the website, forms will also tell you cost of stall rent and number of animals entered.

**WEB SITE ADDRESS, [www.crawfordfair.com](http://www.crawfordfair.com)**

Please note date and times that animals and articles must be available for showing. Due to the uncertainty of the virus restrictions all livestock shows will be shown and released after the show.



Kelli Newlin  
Designated  
Managing  
Broker/Owner



Anita Moulton  
Broker



Erica Lytis  
Broker



Janette Rosborough  
Broker



Dan Leggitt  
Broker



Bill Rosborough  
Managing  
Broker

1010 W Main St, Robinson, IL 62454

[www.crawford-county.com](http://www.crawford-county.com)

**Mail entries to: Crawford County Fair  
412 N. Range  
Oblong, Ill. 62449**

**A FEW RULES WORTH OBSERVING**

5. If you have entries to make, attend to it at once, and when your stock or articles are entered, see that they are in readiness at the proper time and place for examination by the committee or the Judge.
6. Accept no rumor in regard to the business of exhibition. If you do not know what to do, inquire of the officer whose duty it is to tell you. One half of the disappointment and trouble at the fair is occasioned by relying on hearsay.
7. Read the rules and by example assist in enforcing them. Don't forget that mistakes will occur where thousands are congregated. The Board endeavors to do justice to all.
8. The success of the coming fair depends largely upon the manner in which the public patronizes.
9. The exhibitors will commence at 8:00 a.m. each day.
10. No disorderly conduct of any kind will be permitted. A police force, sufficient to prevent the same will be on the grounds. No smoking allowed in the amphitheater. Care will be taken to prevent accidents, but should any occur, the society will not be responsible in any case.
11. Department offices and the check room will close at 6:00 p.m. each day. Entry fees on all exhibits will be no more than 10% of the Purse offered under one Premium, no more than 75% of the smallest Premium offered.
12. Ponies and Saddle Horses Classes open to the world. Borrowing, hiring or temporarily buying animals for the purpose of strengthening the exhibits for show purposes is strictly forbidden. All articles and animals must be entered in the owners name, vegetables and fruit by the producer, being the product of the farm or garden.
13. No persons will be allowed , under any terms, to have or consume

intoxicating liquors on or near the grounds. All policemen will strictly enforce the rule.

14. The books will be open Friday, July 22, 2022, before the opening date of the fair to receive entries at the Secretary's office. All stall and pen rental must accompany application.
15. The Awarding Committee will be selected by the Board. The Superintendent of each department shall enter on the books all premiums awarded.
16. Where only one exhibit is entered in a class, the exhibit shall be declared first and paid first money.
17. All animals, except hogs and sheep, will be exhibited in the ring. The ring will be closed and no animals admitted ten minutes after the call of the Ring Marshall, unless excused by the Superintendent.
18. All premiums will be paid after 12:00 p.m., Friday, July 28, 2023.
19. All stock, except sheep and hogs, on which a premium has been awarded will be required to be in the ring on the last day of the Fair, at such time as the Board may direct, or forfeit the premium, unless excused by the Board.
20. No premium will be awarded to any animal or article unless the entry ticket is attached to it or that which contains it.
21. Any premium check not picked up Friday or Saturday will take approximately two weeks to be delivered.
22. Selling on the grounds of melons of any kind is prohibited, unless by permission of the Board.
23. The Association will use every reasonable precaution to safeguard the public, exhibitors, employees, and exhibits, but positively will not be liable for death, loss, theft, damage, or injury done to any person, animal, article, or automobile.
24. All persons are forbidden to whittle or in any way damage shade trees. Any person violating this rule will be liable to a fine of One Hundred Dollars (\$100.00), together with the cost of prosecution.
25. Blue Ribbon, first premium; Red Ribbon second premium; White Ribbon, third premium; Yellow Ribbon, fourth premium; Royal



- Purple, Champion.
26. The Board reserves the right to postpone the time of exhibition of any classes or articles or animals when, on account of inclement weather or any cause, they deem it advisable.
  27. No stalls or pens will be permitted to be occupied until all entry fees, and pen fees have been paid.
  28. Stall and pens can be secured by applying to the Superintendent of each department.
  29. No person will be allowed to run an engine on the grounds without certificate satisfactory to the Board, showing him to be a practical engineer.
  30. All protests must be in writing, accompanied by an affidavit setting forth the ground for protesting, Protest against exhibition of either animals or articles must be filed with the Secretary on the day of the contest. In every case of protest the parties protesting must deposit a sum of money equal to the amount of the purse. In the event of the protest being sustained, it shall be returned to the complainant, and if the protest shall not be sustained, the sum shall be forfeited to the Board.
  31. No exhibitor will be allowed personally to have access to the books of the Secretary, but may on proper application, have such explanations as are necessary, made by the Secretary.
  32. All Cattle, Sheep, and Hogs must be shown to receive Premium.
  33. All stalls and pens must be cleaned before Premiums will be paid.
  34. All cattle which are tied out will be tied at specified tie outs designated by the Superintendent.
  - 35. No cooking in barns.**
  - 36. The management reserve the right to interpret all rules, and their ruling must be abided by.**
  37. The use of ATV's and Golf Carts during the fair must abide by City of Oblong regulations. Unless the vehicle has a permit it is not permitted to leave the fairgrounds. To obtain a permit contact the City of Oblong at 206 South Range.

#### **AWARDING COMMITTEE**

Each member of the committee will report for duty to the Superintendent of the department in which he or she is to serve as soon as possible after the Fair opens.

The Superintendent shall enter on the books all premiums awarded. An expert judge will be selected by the Board for the purpose of judging.

The Superintendent shall exclude stock from competition should there be any unnecessary or embarrassing delay on the part of the exhibitor in bringing into the show ring.

In judging blooded stock, regard will be held to the purity of blood established by pedigree; size, form, action, and general characteristics of various breeds, making due allowance for age, feeding, or other circumstances.

Awarding committee in judging all young stock will be especially instructed to take into consideration the age of the animals.

Each concessionaire must confine himself to the space assigned for him. Any feature, which in the minds of the executive committee, is objectionable, may be excluded from the grounds without recourse, such as gambling, sale of whips, confetti, etc.

All concessions must close their places of business promptly at 12 o'clock p.m. Concessionaires must abide by the rules of the Society and terms of their licenses and failure to do so shall subject them to the forfeiture of their privileges and exclusion from the grounds without reimbursement.

It will be useless to write or apply for privileges of gambling devices, objectionable shows or for the sale of intoxicating liquors, or similar substitutes, or objectionable features, as the same will not be allowed to be exhibited or sold upon the Fairgrounds. Neither monstrosities nor beggars will be allowed on the grounds.

## **STATE OF ILLINOIS DEPARTMENT OF PUBLIC HEALTH DIVISION OF FOODS AND DAIRIES**

### **Recommended precautions covering the dispensing of food and drink at State and County Fairs and other public gatherings.**

1. Food stands shall be located at a reasonable distance from livestock barns, animal pens and other potential fly-breeding areas.
2. Food stands shall be constructed, maintained and operated in a manner which will not attract flies. Screened enclosures and electric fans to expel flies should also be used when necessary.
3. Single service paper plates, cups and plastic or wood knives, forks and spoons are recommended, but not absolutely required. If multi-use dishes are used, approved dishwashing and sanitizing facilities must be provided and used properly in the Illinois Sanitary Food Law and Regulations. Each stand where food is handled must be provided with approved hand washing facilities, which should include in areas where water is not provided under pressure, a water container and wash basin, soap and individual towels.
4. All waste water, including dish water, shall be disposed of by placing it in the sewers. In the event sewers are not available, this water should be disposed of in a manner satisfactory to the Fair Board and the Illinois Department of Public Health.
5. No drinks, either hot or cold, may be dispensed by dipping into the liquid. Drinks may be dispensed by serving from either a bottle of a closed containers means of a faucet or tap.
6. Approved garbage containers with properly fitting covers must be used. Daily garbage and trash collections are required.
7. All foods must be kept under refrigeration, except bakery goods.
  - a) Refrigerator means electrically operated at a temperature of 45 degrees F. or below.
  - b) Frozen foods must be kept in a deep-freeze refrigerator at a temperature of 0 degree F. or below.
8. No cooked foods or sandwiches shall be prepared more than two hours in advance of sale and shall be kept under refrigeration.
9. No leftover cooked foods or prepared sandwiches may be sold the following day.
10. All foods shall be protected from contamination by dust, flies or public handling. Where preparation equipment such as stoves, grills, preparation tables, etc., are used in the food handling concessions immediately fronting the Midway, it will be necessary that such food preparation areas be adequately protected by solid glass shields or other suitable materials.
11. All stands freezing dairy products must have a Certificate of Approval from the Division of Foods and Dairies for this Fair.
12. **FRANKFURTERS** or **WIENERS** shall be made of good quality meat and free from any cereal and preservatives. They cannot be used if allowed to become slimy or covered with mold.

### **For Health Requirement Information:**

**Illinois Department of Agriculture Bureau of Animal  
Health and Welfare State Fairgrounds P.O. Box 19281  
Springfield, IL 62794-9281  
Phone (217) 782-4944**

### **2023 Exhibition Livestock Health Requirements**

County Fairs

#### **GENERAL REQUIREMENTS**

These Exhibition Health Requirements apply to all livestock present at the fair including those animals that are not entered in competitive events.

1. Exhibitors are required to familiarize themselves with all rules applicable to their exhibits.  
All out-of-state animals shall require an entry permit. Entry permit numbers are available online at  
<https://entrypermit.agr.illinois.gov/Login.aspx>.

- All animals, except as noted, shall be accompanied by a Certificate of Veterinary Inspection (CVI) which shows that the animal meets all health requirements for the State of Illinois. CVI's shall be made available to Bureau of Animal Health Personnel on request. If an official electronic CVI is utilized, the exhibitor should be able to log on and show Bureau of Animal Health Personnel the completed CVI.

CVI means a legible record made on an official form from the state of origin which has been issued, signed and dated by an accredited veterinarian and which shows the name and address of the animal's owner or exhibitor and the results of all required tests or vaccinations. A CVI shall list only one animal identification per line; shall be presented on the form on which it was initially issued; and shall not be corrected, changed or altered in any manner.

- All animals shall be officially identified. The animal(s) official identification shall be recorded on the CVI.
- If animals are from tuberculosis accredited, brucellosis certified, pseudorabies qualified, or brucellosis validated herds, the identifying herd number(s) along with the date of the last herd test(s) shall appear on the CVI.
- CVI for out-of-state livestock shall be void thirty (30) days after issuance.
- CVI for Illinois-origin livestock shall be void ninety (90) days after issuance.
- All livestock shall be subject to examination upon entry to any Illinois fair or exhibition. Any animal showing evidence of infectious, contagious or communicable diseases shall be immediately withdrawn and held in quarantine at the owner's risk and expense until properly treated and recovered, or until the animal is released to return to the owner's premise.  
Any livestock infected with scabies, mange, active lesions of ringworm, soremouth, or multiple warts which are easily visible without close examination shall not be permitted to exhibit and are subject to quarantine or removal from the fairgrounds.  
Sheep and goats with caseous lymphadenitis as evidenced by draining abscesses shall not be exhibited and are subject to immediate quarantine or removal from the fairgrounds.
- Illinois Department of Agriculture personnel or designee may collect blood, tissue, milk or urine samples from any animal being exhibited and/or raced at any Illinois fair to test for the presence of illegal drugs or banned substances. Examination techniques, such as ultrasound, may also be used at anytime while the animals are on the grounds of any Illinois fair or exhibit. The Illinois Department of Agriculture or designee may collect urine, blood, tissue or other test samples from exhibition animals at the time of slaughter.
- All exhibitors of animals at any Illinois fair or exhibition shall comply with the provisions of the Illinois Humane Care for Animals Act. If violations are observed, the animal(s) will be excused from exhibition and ordered removed from the grounds with all awards being forfeited.  
Any practice or deviation from normal, accepted care, including physical, medical or mechanical application, shall constitute a violation of show rules and may result in the animal(s) disqualification and removal from the fairgrounds.
- Any Illinois cattle, bison, cervidae or goats being exhibited in non-accredited free states must be isolated from the remainder of the herd/flock upon return to Illinois and retested for tuberculosis 60-120 days post-entry.

Identification

#### **CATTLE**

Individual identification of each animal shall be either a fully healed and legible tattoo, approved official ear tag, registration number (can only be used if the tattoo is recorded on the registration certificate or for breeds where pictures are acceptable), or individual brands, if brand is recorded on the registration certificate.

#### **Illinois Cattle**

##### **Brucellosis**

Illinois is a Bovine Brucellosis Class-Free State. Brucellosis testing is not required for Illinois cattle.

##### **Tuberculosis**

Illinois is an Accredited Tuberculosis- Free State. Tuberculin testing is not required for

##### **Illinois cattle.**

Please note: Illinois calves under 6 months of age, and Illinois steers are not required to have a Certificate of Veterinary Inspection.

##### **Out-of-State-Cattle**

All out-of-state cattle are to be accompanied by an entry permit. Entry permit numbers are available online at <https://entrypermit.agr.illinois.gov/Login.aspx>.

##### **Brucellosis**

- Female cattle six (6) months of age and older and bulls eighteen (18) months of age and older shall be negative to an official test for brucellosis within thirty (30) days prior to entry, unless exempt by one (1) of the following:
  - Originate directly from a certified brucellosis-free herd.
  - Official vaccinates of dairy breeds under twenty (20) months of age or official vaccinates of beef breeds under twenty-four (24) months of age.
  - Animal originated from a "Class Free" state (if entire state is so classified)
  - Steers and spayed heifers are not required to be tested for brucellosis.
- The negative brucellosis test shall be conducted at a state or federal laboratory within 30 days prior to exhibition.

##### **Tuberculosis**

- Accredited Tuberculosis Free States
  - No tuberculin test required. All cattle, including steers, originating from an Accredited Tuberculosis Free State, may enter Illinois for exhibition when accompanied by a CVI issued by an accredited veterinarian within 30 days.
  - Non-Accredited Tuberculosis Free Areas or States (Not TB Free)
    - Cattle must originate from a herd where a complete herd test was conducted within the past year.
    - The individual animals entering Illinois must be negative to an additional tuberculin test conducted within 30 days prior to exhibition.
    - Cattle that enter Illinois for exhibition and remain in Illinois (animal does not return to the state of origin within 30 days) must be isolated and retested for TB 60-120 days from the last official TB test date.

##### **SWINE**

##### **Illinois Swine**

##### **Identification**

- Swine shall be identified by an official ear tag, tattoo or recognized breed ear notch.
- Ear notch identification is acceptable for all barrows, crossbred gilts and breeding swine. (Note: Ear notch identification of crossbred swine does not satisfy USDA identification requirements for interstate movement or official testing.)

##### **Brucellosis**

Brucellosis testing is not required for Illinois swine.

##### **Pseudorabies**

Pseudorabies testing is not required for Illinois swine.

##### **Out-of-State Swine**

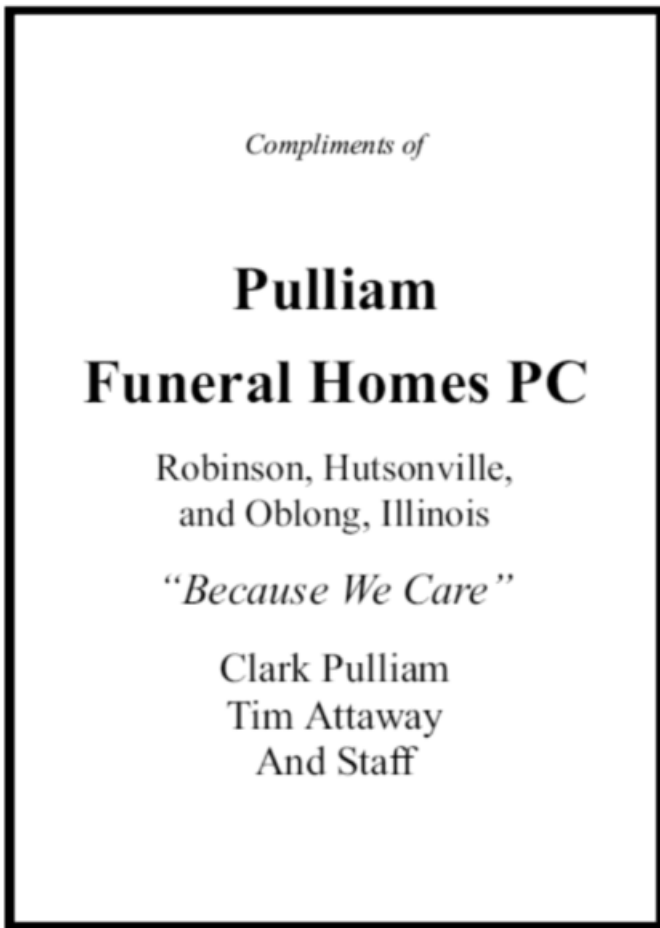
All out-of-state swine are to be accompanied by an entry permit. Entry permit numbers are available online at <https://entrypermit.agr.illinois.gov/Login.aspx>.

##### **Identification**

- Individually identified by an official ear tag, tattoo or recognized breed ear notch.
- Ear notch identification is not acceptable for crossbred animals.

##### **Brucellosis**

- Breeding swine 4 months of age and older shall be negative to an official test for brucellosis within 30 days prior to exhibition unless



exempt by one (1) of the following:

- A. Originate immediately and directly from a validated brucellosis-free herd.
- B. Originate directly from a validated brucellosis-free state.
2. Swine brucellosis tests for exhibition shall be conducted at a state or federal laboratory.

**Pseudorabies**

1. Swine originating from a Pseudorabies Stage IV or V state are exempt from the pseudorabies testing requirement.
2. Swine originating from a Pseudorabies Stage III state shall be negative to an official test for pseudorabies conducted within thirty (30) days prior to entry or originate immediately and directly from a qualified pseudorabies negative herd.
3. Swine originating from a Pseudorabies Stage I or II state shall be negative to an official test for pseudorabies conducted within the 10 days prior to entry.
4. Barrows and females in market classes must meet the same requirements as breeding swine.

Identification

**SHEEP**

Individual identification of each animal shall be by an ear tattoo or official metal or plastic tag. A microchip ID is acceptable if the owner provides the reader.

Ear tattoos may be used when a registration certificate, listing the tattoo number, accompanies the animal.

When using ear tags, the tag must indicate the premises ID and state of origin. The tag number must be assigned by a state or APHIS representative and recorded in the Scrapie Record Database.

**Market Lambs**

All market lambs must be slick shorn (show ring ready) before weighing in so that show lamb fungus can be identified.

**Illinois Sheep**

1. Sheep originating from a flock that has previously been classified as

either an infected or source flock can be exhibited in Illinois upon the completion of an approved flock plan.

2. For any animal born after 1/1/2002, the CVI must include the flock of birth and the flock of origin, if different.

**Out-of-State Sheep**

All out-of-state sheep are to be accompanied by an entry permit. Entry permit numbers are available online at <https://entrypermit.agr.illinois.gov/Login.aspx>.

1. Sheep originating from a flock that has previously been classified as either an infected or source flock can be exhibited in Illinois upon the completion of an approved flock plan.
2. For any animal born after 1/1/2002, the CVI must include the flock of birth and the flock of origin, if different.

Identification

**GOATS**

Individual identification of each animal shall be by an ear tattoo or official metal or plastic tag. A microchip ID is acceptable if the owner provides the reader.

Tattoos may be used when a registration certificate, listing the tattoo number, accompanies the animal.

When using ear tags, the tag must indicate the premises ID and state of origin. The tag number must be assigned by a state or APHIS representative and recorded in the Scrapie Record Database.

Ears should be used for tattooing when possible. If there is no space in the ear, the flank or tail fold may be used.

**Illinois Goats**

1. Goats originating from a herd that has previously been classified as either an infected or source herd can be exhibited in Illinois upon the completion of an approved herd plan.
2. For any animal born after 1/1/2002, the CVI must include the flock of birth and the flock of origin, if different.

**Out-of-State Goats**

All out-of-state goats are to be accompanied by an entry permit. Entry permit numbers are available online at <https://entrypermit.agr.illinois.gov/Login.aspx>.

1. Goats originating from a herd that has previously been classified as either an infected or source herd can be exhibited in Illinois upon the completion of an approved herd plan.
2. Tuberculosis- Goats from areas or states that are not Accredited Bovine Tuberculosis Free, must be accompanied by a CVI indicating that the goats originated from a herd where a complete negative herd test has been conducted within the past twelve (12) months and the individual animals are negative to a tuberculin test conducted within thirty (30) days prior to entry. For any animal born after 1/1/2002, the CVI must include the flock of birth and the flock of origin, if different.

**HORSES, PONIES, MULES AND OTHER EQUIDAE**

**Illinois Equine**

1. All horses and other equidae, twelve (12) months of age and older attending an advertised equine event, shall be accompanied by a negative test for equine infectious anemia (EIA) conducted within the last twelve (12) months. A copy of this test shall accompany the animal.
2. AGID (Coggins) or ELISA tests are accepted.
3. An advertised equine event means a show, rodeo, sale, auction, exhibition, trail ride, or horse fair that is posted or media promoted.
4. A CVI is not required for Illinois equine.

**Out-of-State Equine**

All out-of-state equine are to be accompanied by an entry permit.

Entry permit numbers are available online at <https://entrypermit.agr.illinois.gov/Login.aspx>.

1. All horses and other equidae entering Illinois that are twelve (12) months of age or older, shall be accompanied by a negative test for equine infectious anemia (EIA) conducted within the last twelve (12) months. A copy of this test shall accompany the animal.
2. AGID (Coggins) or ELISA tests are accepted.

3. All horses and other equidae shall be accompanied by a CVI issued within thirty (30) days prior to entry.

#### **POULTRY**

1. All entries (except waterfowl, i.e. domesticated fowl that normally swim, such as ducks and geese) in a show or exhibition shall have originated from a U.S. Pullorum-Typhoid Clean or equivalent hatchery or flock OR have a negative pullorum-typhoid test within 90 days prior to exhibition. Exhibitor shall show proper information as to name and address of owner or exhibitor, name and address of the authorized testing agent, date of the testing and the number, breed, and species of those tested.
2. Prior to being used to transport poultry to a show, all crates, boxes, containers and vehicles shall be thoroughly cleaned and disinfected.
3. Any poultry vaccinations must be performed at least 4 weeks prior to delivery to the show.
4. Upon admission to a show, all entries shall be examined by the official county fair veterinarian or qualified state personnel who shall also receive and examine all certificates necessary for admission of birds to a show. Birds not in show condition will be excused from exhibition and removed from the premises. Any fowl showing signs of illness during the fair will be removed from the exhibition grounds.
5. All out-of-state turkeys must originate from flocks that are officially classified as U.S. Mycoplasma Gallisepticum Clean in accordance with the provisions of the National Poultry Improvement Plan or be negative to a test for Mycoplasma gallisepticum within 30 days prior to entry.
6. A permit is also required for out-of-state poultry. Entry permit numbers are available online at <https://entrypermit.agr.illinois.gov/Login.aspx>.

Please note: These poultry exhibition requirements do not apply to 4-H and FFA 1-day poultry shows where the entries are taken to the show and returned home the same day. However, a permit is required for out-of-state poultry.

#### **CERVIDAE**

(Deer, Elk, Reindeer, Caribou, Moose, Red Deer and other Related Species)

##### **Identification**

All animals shall be individually identified with an approved tag, microchip or tattoo. Elk are required to have two official/approved unique identifiers.

##### **Illinois Cervidae**

###### **Chronic Wasting Disease**

For cervidae changing ownership or moving within the State, the owner must obtain a permit issued by the Department prior to movement and the cervid must originate from a herd that is enrolled in the Certified Monitored Chronic Wasting Disease (CWD) Program or the Contained Monitored Chronic Wasting Disease Program. The permit shall be obtained no more than 72 hours in advance of the movement of the cervids by providing the following information:

- A) Name and complete mailing address of person exhibiting the cervids;
- B) Certified Monitored Chronic Wasting Disease or Contained Monitored Chronic Wasting Disease Herd number;
- C) Name and complete mailing address of location where the animals will be exhibited;
- D) Number of animals and unique identification of the animals.

##### **Tuberculosis**

Illinois is an Accredited Tuberculosis-Free State. Tuberculin test is not required for Illinois cervidae.

##### **Out-of-State Cervidae**

###### **Chronic Wasting Disease**

1. All cervidae entering Illinois must be in compliance with the Illinois Wildlife Code [520 ILCS 5]. For more information, contact the Illinois Department of Natural Resources at 217/782-6384.
2. All cervidae entering Illinois must be accompanied by a permit

- a: from the Department and a Certificate of Veterinary Inspection that:
  - a: has been issued by an accredited veterinarian of the state of origin or a veterinarian in the employ of the United States Department of Agriculture;
  - b: is approved by the Animal Health Official of the state of origin;
  - c: shows that the cervidae are free from visible evidence of any contagious, infectious or communicable disease or exposure thereto, do not originate from a CWD endemic area (any county and surrounding counties where CWD has been diagnosed in the past five years);
  - d: shows that the cervidae are not originating from a herd under quarantine for any contagious, infectious or communicable disease;
  - e: shows that the animals originate from a herd that has been monitored for at least 5 years under a state-approved CWD certification program.
3. A permit number can be obtained by applying online at <https://www2.illinois.gov/sites/agr/Animals/AnimalHealth/Documents/permitrequestform.pdf>. Applicant for permit shall furnish the following information to the Department:
  - a: Name and post office mailing address of Illinois destination;
  - b: Name and post office mailing address of the consignor and/or source herds;
  - c: Name and post office mailing address of the herd veterinarian;
  - d: Number and unique identification of cervidae in shipment.

##### **Brucellosis**

Cervidae six (6) months of age and older must have a negative brucellosis card or PCFIA test within sixty (60) days prior to entry.

##### **Tuberculosis**

###### **1. Accredited Tuberculosis Free States**

All cervidae twelve (12) months of age and over shall be negative to two (2) single cervical test for bovine TB no less than ninety (90) days apart with the second test conducted within ninety (90) days prior to entry. These animals shall be isolated from all other members of the herd during the testing period unless they originate from an accredited, qualified or monitored herd.

- A. Cervidae from an accredited herd may be moved into Illinois without further TB testing provided that a certificate stating that such cervids originated from an accredited herd accompanies them.
  - B. Cervidae originating from qualified or monitored herds may enter with a negative test within ninety (90) days prior to entry and a certificate stating that the animals originate from a monitored herd.
2. Non-Accredited Tuberculosis Free Areas or States (Not TB Free)
    - A. All cervidae shall originate from a herd where a complete herd test was conducted within the past year.
    - B. The individual animals entering Illinois must be negative to two (2) additional tuberculin tests conducted within 180 and 30 days prior to entry or exhibition.

##### **RATITES**

(Ostriches, Emus, Rheas, Cassowaries and Kiwis)

##### **Illinois Ratites**

There are no requirements governing the movement of ratites within Illinois.

##### **Out-of-State Ratites**

1. Must be accompanied by a CVI and permit number. Entry permits are available online at <https://entrypermit.agr.illinois.gov/Login.aspx>
2. Individually identified by leg band or microchip.
3. Negative test for Avian Influenza within 10 days prior to entry.

##### **PIGEONS**

There are no requirements governing the movements of pigeons within or into Illinois.

##### **RABBITS**

There are no requirements governing the movements of rabbits within or into Illinois.

##### **LLAMAS**

There are no requirements governing the movement of llamas within Illinois. A permit and health certificate is required for out-of-state lla-



# CaseyStateBank

*Your Community, Your Bank*

We're here to help with all your financial needs!

Checking  
Savings  
Loans

618-544-5867



[www.caseystatebank.com](http://www.caseystatebank.com)



mas. Entry permit numbers are available online at  
<https://entrypermit.agr.illinois.gov/Login.aspx>

## IMPORTANT NOTICE FOR LIVESTOCK EXHIBITORS

All purebred livestock that is showing in the open show must have registration papers. No one will be permitted to exhibit in the open show without registration papers. The name of the exhibitor does not have to be the name that is on the registration papers. Herdsman papers will not be accepted. Only two entries can be made under one Social Security Number.

## CLASS A BEEF CATTLE

### Superintendents

Kelby Eubank - Ph. - 618-553-1629

Travis Miller - Ph. - 618-553-7102

Entry forms available at [www.crawfordfair.com](http://www.crawfordfair.com)

All Animals must be shown as they are registered with their respective breeds associations.

Please review both the General Rules for Exhibitors and the Illinois Department of Agriculture Livestock Health Requirements printed at the beginning of this fair book as they may apply to your entry

Open to the State of Illinois and surrounding states.

The judge has the right to set down any animals not showing properly in these classes.

Entries are to be started on or before 6 p.m., Saturday, July 22, 2023.

Livestock must be on the grounds by 10:00 pm Sunday, July 23, 2023.

Release Wednesday, July 26, 2023 after 10:00 pm. per 72 hour rule per the STATE OF ILLINOIS

Judging Wednesday July, 26 after 4-H

Premiums Offered \$21,345.00

Purse \$379.00

First \$103.00; Second \$97.00; Third \$92.00; Fourth \$87.00

Maintenance Fee: \$28.00 per Head IS PAID WHEN REGISTERING

Entry Fee \$40.00 on winners only.

**All equipment must be stored outside**

**Only Two Entries Permitted In One Premium Number per Class**

### ANGUS

1. Jr. or Sr. Bull (Calved before March 1, 2022)
2. Spring & Summer Yearling Bull (Calved March 1 to August 30, 2022)
3. Senior & Junior Bull Calf (Calved after Sept. 1 2022)
4. Champion Bull (\$50.00)
5. Two Bulls (any age)
6. Jr. or Sr. Heifer (Calved before March 1, 2022)
7. Spring Yearling Female (Calved Mar. 1 to Apr. 30, 2022)
8. Summer Yearling Female (Calved May 1 to Aug. 31, 2022)
9. Senior Heifer Calf (Calved Sept. 1 to Dec. 31, 2022)
10. Junior Heifer Calf (Calved after Jan. 1, 2023)
11. Champion Heifer (\$50.00)
12. Two Females (any age)
13. Best Pair (one of each sex)

### HEREFORD & POLLED HEREFORD

21. Jr. or Sr. Bull (Calved before March 1, 2022)
22. Spring & Summer Yearling Bull (Calved March 1 to August 30, 2022)
23. Senior & Junior Bull Calf (Calved after Sept. 1 2022)
24. Champion Bull (\$50.00)
25. Two Bulls (any age)
26. Jr. or Sr. Heifer (Calved before March 1, 2022)
27. Spring Yearling Female (Calved Mar. 1 to Apr. 30, 2022)

# SUPERIOR WELDING, INC.

9172 E. 1050 AVENUE  
ROBINSON, IL  
618-544-8822

**HAVE A GREAT FAIR!**

- 28 Summer Yearling Female (Calved May 1 to Aug. 31, 2022)
- 29. Senior Heifer Calf (Calved Sept. 1 to Dec. 31, 2022)
- 30. Junior Heifer Calf (Calved after Jan. 1, 2023)
- 31. Champion Heifer (\$50.00)
- 32. Two Females (any age)
- 33. Best Pair (one of each sex)

### SHORTHORNS, POLLED SHORTHORNS, & RED POLL

- 61. Jr. or Sr. Bull (Calved before March 1, 2022)
- 62. Spring & Summer Yearling Bull (Calved March 1 to August 30, 2022)
- 63. Senior & Junior Bull Calf (Calved after Sept. 1 2022)
- 64. Champion Bull (\$50.00)
- 65. Two Bulls (any age)
- 66. Jr. or Sr. Heifer (Calved before March 1, 2022)
- 67. Spring Yearling Female (Calved Mar. 1 to Apr. 30, 2022)
- 68. Summer Yearling Female (Calved May 1 to Aug. 31, 2022)
- 69. Senior Heifer Calf (Calved Sept. 1 to Dec. 31, 2022)
- 70. Junior Heifer Calf (Calved after Jan. 1, 2023)
- 71. Champion Heifer (\$50.00)
- 72. Two Females (any age)
- 73. Best Pair (one of each sex)

### SIMMENTAL

- 81. Jr. or Sr. Bull (Calved before March 1, 2022)
- 82. Spring & Summer Yearling Bull (Calved March 1 to August 30, 2022)
- 83. Senior & Junior Bull Calf (Calved after Sept. 1 2022)
- 84. Champion Bull (\$50.00)
- 85. Two Bulls (any age)
- 86. Jr. or Sr. Heifer (Calved before March 1, 2022)
- 87. Spring Yearling Female (Calved Mar. 1 to Apr. 30, 2022)
- 88 Summer Yearling Female (Calved May 1 to Aug. 31, 2022)
- 89. Senior Heifer Calf (Calved Sept. 1 to Dec. 31, 2022)
- 90. Junior Heifer Calf (Calved after Jan. 1, 2023)
- 91. Champion Heifer (\$50.00)
- 92. Two Females (any age)
- 93. Best Pair (one of each sex)

### ALL OTHER REGISTERED BREEDS

**Must be Registered at least 1/2 in Respective Breeds**

- Must be Registered at least 1/2 in Respective Breeds
- 101. Jr. or Sr. Bull (Calved before March 1, 2022)
  - 102. Spring & Summer Yearling Bull (Calved March 1 to August 30, 2022)
  - 103. Senior & Junior Bull Calf (Calved after Sept. 1 2022)
  - 104. Champion Bull (\$50.00)
  - 105. Two Bulls (any age)
  - 106. Jr. or Sr. Heifer (Calved before March 1, 2022)
  - 107. Spring Yearling Female (Calved Mar. 1 to Apr. 30, 2022)
  - 108. Summer Yearling Female (Calved May 1 to Aug. 31, 2022)
  - 109. Senior Heifer Calf (Calved Sept. 1 to Dec. 31, 2022)
  - 110. Junior Heifer Calf (Calved after Jan. 1, 2023)
  - 111. Champion Heifer (\$50.00)
  - 112. Two Females (any age)

- 113. Best Pair (one of each sex)

### Champion of Show

No entry Fee • Rosette to Champion

- 150. Champion Bull (\$50.00)
- 151. Champion Female (\$50.00)

## IMPORTANT NOTICE FOR LIVESTOCK EXHIBITORS

**All purebred livestock that is showing in the open show must have registration papers**

**No one will be permitted to exhibit in the open show without registration papers. The name of the exhibitor does not have to be the name that is on the registration papers. Herdsman papers will not be accepted. Only two entries per class can be made under one Social Security Number.**



## CLASS B DAIRY CATTLE

Michelle Wagner, Superintendent, Ph. 217-232-2246

Entry forms available at [www.crawfordfair.com](http://www.crawfordfair.com)

Premiums Offered \$15,880.00

Open to State of Illinois and surrounding states.

Entries are to be started on or before 6 p.m., Saturday, July 22, 2023.

Livestock must be on the grounds by 10:00 pm Sunday, July 23, 2023. Release Wednesday, July 26, 2023 after 10:00 pm. per 72 hour rule per the STATE OF ILLINOIS

Dairy judging will occur Tuesday, July 25, 2023-( 4-H will begin at 8:30 a.m., followed by the Open Show, Junior Show will follow the Open Show); Breeds will show in book order.

All animals must be shown as they are registered with their respective breed associations.

Please review both the General Rules for Exhibitors and the Illinois Department of Agriculture Livestock Health Requirements printed at the beginning of this fair book as they may apply to your entry  
Open Dairy Judging - after 4-H judging

### DEFINITION OF CLASS

Winter Heifer Calf - calved December 1, 2022 - February 28, 2023

Senior Heifer Calf - calved September 1, 2022 - November 30, 2022

Junior Yearling Heifer - calved March 1, 2022 - August 31, 2022

Senior Yearling Heifer - calved September 1, 2021 - February 28, 2022

### No Heifers in Cow Classes.

Best three females - Any Age

Entry Fee, \$33.00 on winners only.

Maintenance Fee: \$22.00 Per Head IS PAID WHEN REGISTERING

Purse \$330.00

First \$90.00; Second \$85.00; Third \$80.00; Fourth \$75.00

Stall Rent will be paid by all open class exhibitors

**ALL EQUIPMENT MUST BE STORED OUTSIDE**

**Only Two Entries Permitted Under Each Premium Number per Class**

**JERSEY**

- 241. Winter Heifer Calf
- 242. Senior Heifer Calf
- 243. Junior Yearling Heifer
- 244. Senior Yearling Heifer (not in milk)
- 245. Cow, 2 or 3 yrs. old
- 246. Cow, 4 yrs. and older
- 247. Best Uddered Cow
- 248. Product of Dam
- 249. Best 3 Females any age
- 250. Reserve Champion Female \$40.00
- 251. Champion Female \$50.00

**HOLSTEINS**

- 271. Winter Heifer Calf
- 272. Senior Heifer Calf
- 273. Junior Yearling Heifer
- 274. Senior Yearling Heifer (not in milk)
- 275. Cow, 2 or 3 yrs. old
- 276. Cow, 4 yrs. and older
- 277. Best Uddered Cow
- 278. Product of Dam
- 279. Best 3 Females any age
- 280. Reserve Champion Female \$40.00
- 281. Champion Female \$50.00

**GUERNSEYS & AYRSHIRE**

- 301. Winter Heifer Calf
- 302. Senior Heifer Calf
- 303. Junior Yearling Heifer
- 304. Senior Yearling Heifer (not in milk)
- 305. Cow, 2 or 3 yrs. old
- 306. Cow, 4 yrs. and older
- 307. Best Uddered Cow
- 308. Product of Dam
- 309. Best 3 Females any age
- 310. Reserve Champion Female
- 311. Champion Female \$50.00

**MILKING SHORTHORNS & BROWN SWISS**

- 331. Winter Heifer Calf
- 332. Senior Heifer Calf
- 333. Junior Yearling Heifer
- 334. Senior Yearling Heifer (not in milk)
- 335. Cow, 2 or 3 yrs. old
- 336. Cow, 4 yrs. and older
- 337. Best Uddered Cow
- 338. Product of Dam
- 339. Best 3 Females any age
- 340. Reserve Champion Female \$40.00
- 341. Champion Female \$50.00

**SUPREME CHAMPION FEMALE**

- 380. Supreme Champion Female \$50.00

**IMPORTANT NOTICE FOR LIVESTOCK EXHIBITORS**

All purebred livestock that is showing in the open show must have registration papers. No one will be permitted to exhibit in the

*"Proud Supporter of Crawford County 4-H... good luck at the fair!"*

**PALESTINE CHAMBER OF COMMERCE**

103 SOUTH MAIN - PALESTINE, IL 62451 - 618-586-2222

*Fine Merchants & Services  
 Variety of Antique Shops  
 Fine & Folk Art Galleries  
 Unique Floral & Gift Shops  
 Restaurants & Cafes*

*David Fife Opera House  
 Beautiful Leaverton Park  
 1950's Caboose  
 Fine Schools, Churches &  
 Various Organizations*

*Teeny Tiny Tea Party - Superbowl Sunday at Fife Opera House  
 Annual Labor Day Celebration & Pioneer City Rodeo - Labor Day Weekend  
 Wine and Arts Festival - 1st Weekend in October  
 Merchants Open House & PPS Cookie Walk - Third Saturday in November  
 Lighting of the Park - Fourth Friday in November*

**VISIT HISTORICAL PALESTINE ANYTIME OF THE YEAR...YOU'RE ALWAYS WELCOME**

*"Oldest Town in the State of Illinois"*



**Oblong, IL**

**EST. 1985**

**MAUS'S WELL SERVICE, INC.**

**In Loving Memory of Kevin Don Maus**

605 E. Wisconsin St.

Oblong, Illinois 62449

Home: 618-592-4103 Cell: 618-562-8117

[petemaus81@yahoo.com](mailto:petemaus81@yahoo.com)

Cindy Maus



Lacey Bliss

Kody Maus



open show without registration papers. The name of the exhibitor does not have to be the name that is on registration papers. Herdsman papers will not be accepted. Only two entries per class can be made under one Social Security Number.

## CLASS F SHEEP

### NOTICE FOR SHEEP EXHIBITORS:

Laci Pethtel, Superintendent Ph. 553-8431

Entry forms available at [www.crawfordfair.com](http://www.crawfordfair.com)  
Premiums Offered \$9,852.00

Sheep classes Open to the world.

Entries are to be started on or before 6 p.m., Saturday, July 22, 2023  
Livestock must be on the grounds by 10:00 pm Sunday, July 23, 2023.  
Release Wednesday, July 27, 2023 after 10:00 pm. per 72 hour rule per the STATE OF ILLINOIS  
Judging Tuesday, July 25, 2023 after 4-H Judging  
Beyond The Ring Junior Livestock Show Sanctioned Sheep classes open to ages 5-21 from age as of Jan 1 of current year

#### REGULATIONS GOVERNING SHEEP FOR EXHIBITION Definition:

"Official health certificate" as referred to in these regulations shall be one issued and signed by an approved accredited veterinarian or veterinarian of the Bureau of Animal Industry. Sample in back of book.

All sheep for exhibition purposes in Illinois must be accompanied by an official health certificate showing no infectious and contagious

diseases.

1. All sheep exhibited must have been born on or after Jan 1 of current year
2. All sheep must be owned by e obit or by June 1 of current year.
3. Market class weights may be altered by superintendent to balance classes
4. All market animals will be weighed. Scales are located in 4H barn so be prepared for that.
5. Lambs must be exhibited by breed. A minimum of 5 lambs are required for a breed to have its own class. If less than 5 then will be added to an AOB class. Exhibitors must declare breed.
6. Classes should try to be equal in quantity as possible to increase fairness

All Sheep to be Registered  
**NO FOOT ROT**

#### DEFINITIONS

Ram: 1 year and under 2  
Ewe: 1 year and under 2  
Aged Ewe: 2 years old or over  
Yearling: 1 year old and under

Entry Fee \$16.00 on winners only  
Maintenance Fee: \$15.00 per head-PAID WHEN REGISTERING

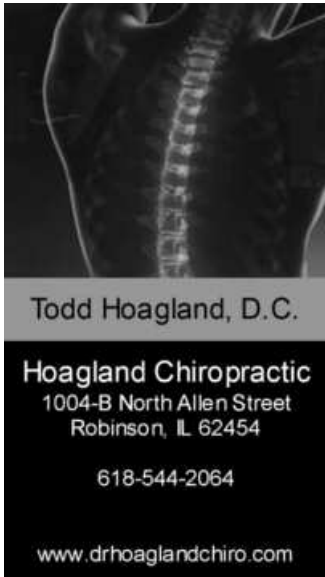
Purse: \$228.00  
First \$60.00; Second \$58.00; Third \$56.00; Fourth \$54.00  
Stall rent will be paid by all open show exhibitors.  
**Only Two Entries In One Premium Number per Class**

# *Best Wishes from* **Hershey Chocolate & Confectionery**

A Subsidiary of



1401 West Main Street  
Robinson, Illinois 62454



**SHROPSHIRE**

- 410. Ram
- 411. Champion Ram \$10.00
- 412. Ewe
- 413. Spring Ewe Lamb
- 414. Fall Ewe Lamb
- 415. Champion Ewe \$10.00

**WHETHER - SIRE & DAM  
 Does not have to Registered**

- 420. Ram
- 421. Champion Ram \$10.00
- 422. Ewe
- 423. Spring Ewe Lamb
- 424. Fall Ewe Lamb
- 425. Champion Ewe \$10.00

**ALL OTHER BREEDS WOOL**

- 430. Ram
- 431. Champion Ram \$10.00
- 432. Ewe
- 433. Spring Ewe Lamb
- 434. Fall Ewe Lamb
- 435. Champion Ewe \$10.00

**DORSET & MONTADALES**

- 450. Ram
- 451. Champion Ram \$10.00
- 452. Ewe
- 453. Spring Ewe Lamb
- 454. Fall Ewe Lamb
- 455. Champion Ewe \$10.00

**HAMPSHIRE & SUFFOLK**

- 470. Ram
- 471. Champion Ram \$10.00
- 472. Ewe
- 473. Spring Ewe Lamb
- 474. Fall Ewe Lamb
- 475. Champion Ewe \$10.00

**LONG WOOLS (LEICESTER, LINCOLN, COTSWOLD)**

- 490. Ram
- 491. Champion Ram \$10.00
- 492. Ewe
- 493. Spring Ewe Lamb
- 494. Fall Ewe Lamb
- 495. Champion Ewe \$10.00

**ALL OTHER BREEDS MEAT**

- 510. Ram

- 511. Champion Ram \$10.00
- 512. Ewe
- 513. Spring Ewe Lamb
- 514. Fall Ewe Lamb
- 515. Champion Ewe \$10.00

**SOUTHDOWN**

All Southdowns Slick Shown according to National Association

- 550. Ram
- 551. Champion Ram \$10.00
- 552. Ewe
- 553. Spring Ewe Lamb
- 554. Fall Ewe Lamb
- 555. Champion Ewe \$10.00

**OXFORD**

- 570. Ram
- 571. Champion Ram \$10.00
- 572. Ewe
- 573. Spring Ewe Lamb
- 574. Fall Ewe Lamb
- 575. Champion Ewe \$10.00

**CLASS-G**

**SWINE**

Entry forms available at [www.crawfordfair.com](http://www.crawfordfair.com)

Erica Hatfield, Superintendent PH. 554-0922  
 Johnathan Staley PH. 554-3243

Show to be Tuesday July 25, 2023 26 at 4:00 p.m.  
 Premiums Offered \$9,000.00

See rules Governing Swine for Entry and Exhibition  
 Entries close 6 p.m. Saturday, July 22, 2023.

Livestock must be on the grounds by 10:00 pm Sunday, July 23, 2023.  
 Release Wednesday, July 26, 2023 after 10:00 pm. per 72 hour rule  
 per the STATE OF ILLINOIS

**PAY 4 PLACES IN EACH CLASS  
 PAY TOP 8 EACH BREED**

Entry Fee \$20.00 on winners only  
 Maintenance Fee: \$19.00 per head- PAID WHEN REGISTERING  
 Open to the State of Illinois

Breed Order is as follows:

Berkshire, Chester White, Duroc, Hampshire, Herford, Poland-China,  
 Spots, Yorkshire, Tamworth, Dark Cross and Light Cross

If you have any questions about show times, be sure to contact department superintendent.

1. All gilts exhibited in the division must have been farrowed on or after January 1, current year, barrows January 15, current year
2. All swine must be owned by exhibitor by June 1, current year.
3. All animals entered must be registered in the name of the exhibitor only and are required to have registration papers at check in. Paper must match exhibitor's name in which they are entered. All animals exhibited shall be plainly ear marked and these ear marks will be inspected.
4. Ear Notch Identification is acceptable for barrow, crossbred gilts and breeding as long as they are in-state hogs.
5. Each exhibitor must be responsible for his market animal (barrow to be weighed at the designated time.)
6. Barrow Class weights may be altered by superintendent to balance classes. .
7. All crossbred animals will use weights for class breaks  
 \*\*\*\*Weights will be by declared weight\*\*\*\* Scales are located in the 4-H barn so please prepare for this.
8. Show is open to any exhibitors ages 5-21 as of Jan 1, 2024
9. Barrows and gilts will be shown by breeds- Berkshire, Chester White, Duroc, Hampshire, Herford, Poland-China, Spots,

Yorkshire, Tamworth, Dark Cross and Light Cross  
10. Non Crawford County 4-H animals will be required to house in the open show barn on the East side of the fairgrounds. Loading to trailer for day of show is acceptable but please note parking is limited and please be courteous to those already parked and do not block anyone in.

Classes as Follows: Berkshire, Chester White, Duroc, Hampshire, Herford, Landrace, Poland China, Spot, Tamworth, Yorkshire, Light Cross and Dark Cross  
All breed champions will show in final drive for final placings

Purse \$270.00  
First \$75.00; Second \$70.00; Third \$65.00; Fourth \$60.00

#### **BERKSHIRE**

670. January Barrow  
671. February Barrow  
672. Champion Barrow \$10.00  
673. January Gilt  
674. February Gilt  
675. Champion Gilt \$10.00

#### **CHESTER WHITE**

680. January Barrow  
681. February Barrow  
682. Champion Barrow \$10.00  
683. January Gilt  
684. February Gilt  
685. Champion Gilt \$10.00

#### **DUROC**

690. January Barrow  
691. February Barrow  
692. Champion Barrow \$10.00  
693. January Gilt  
694. February Gilt  
695. Champion Gilt \$10.00

#### **HAMPSHIRE**

700. January Barrow  
701. February Barrow  
702. Champion Barrow \$10.00  
703. January Gilt  
704. February Gilt  
705. Champion Gilt \$10.00

#### **POLAND CHINA**

710. January Barrow  
711. February Barrow  
712. Champion Barrow \$10.00  
713. January Gilt  
714. February Gilt  
715. Champion Gilt \$10.00

#### **SPOTTED**

720. January Barrow  
721. February Barrow  
722. Champion Barrow \$10.00  
723. January Gilt  
724. February Gilt  
725. Champion Gilt \$10.00

#### **YORKSHIRE**

730. January Barrow  
731. February Barrow  
732. Champion Barrow \$10.00  
733. January Gilt  
734. February Gilt  
735. Champion Gilt \$10.00

#### **ALL OTHER BREEDS**

740. January Barrow  
741. February Barrow

742. Champion Barrow \$10.00  
743. January Gilt  
744. February Gilt  
745. Champion Gilt \$10.00

#### **Crossbred Barrow: \*These classes will be determined by weight\***

761. Class 1  
762. Class 2  
763. Class 3  
764. Class 4  
765. Class 5  
766. Class 6  
767. Class 7  
768. Class 8  
769. Crossbred Barrow Champion  
770. Crossbred Barrow Reserve

#### **Crossbred Gilt: \*These classes will be determined by weight\***

771. Class 1  
772. Class 2  
773. Class 3  
774. Class 4  
775. Class 5  
776. Class 6  
777. Class 7  
778. Class 8  
779. Class 9  
780. Crossbred Champion Gilt  
781. Crossbred Reserve Gilt  
782. Champion OVERALL Barrow  
783. Champion OVERALL Gilt  
784. Reserve OVERALL Barrow  
785. Reserve OVERALL Gilt

## **CLASS H JUNIOR DEPARTMENT LIVESTOCK**

**Entry forms available at [www.crawfordfair.com](http://www.crawfordfair.com)**

Must be owned & shown by boy or girl, 8 thru 21 years of age.

Open to the world

Only two Entries Permitted In One Premium Number per Class

All breeds showing together

No Stall Rent

Premiums Offered \$4,390.00

Entries close 6 p.m. Saturday, July 22, 2023

Entries are to be started on or before 6 p.m., Saturday, July 22, 2023.  
Livestock must be on the grounds by 10:00 pm Sunday, July 23, 2023.  
Release Wednesday, July 27, 2023 after 10:00 pm. per 72 hour rule per the STATE OF ILLINOIS

## **BEEF DEPARTMENT**

Travis Miller - PH. - 618-553-7102

Kelby Eubank - PH. - 618-553-1629

Jr. Show beef will show with 4-H, July 26, 2023 10:00 a.m.

Entry Fee \$15.00 on winners only.

All participants must register with superintendent upon arrival.

Proper health certificates and NAIS registration number must accompany entries.

Purse \$110.00

1st, \$50.00; 2nd, \$40.00; 3rd, \$30.00

#### **ANGUS**

800 Jr. or Sr. Heifer (Calved before March 1, 2022)

801. Spring Yearling Female  
(Calved March 1 to April 30, 2022)

802. Summer Yearling Female (Calved May 1 to Aug. 31, 2022)

803. Senior Heifer Calf (Calved after Sept. 1, 2022)

804. Jr Heifer Calf (Calved after Jan 1, 2023)

805. Champion \$50.00



**1619 W. Main Street  
Robinson, Illinois 62454  
618 546-1502**

*Enjoy the Fair!*

**HEREFORD**

- 810 Jr. or Sr. Heifer (Calved before March 1, 2022)
- 811. Spring Yearling Female  
(Calved March 1 to April 30, 2022)
- 812. Summer Yearling Female (Calved May 1 to Aug. 31, 2022)
- 813. Senior Heifer Calf (Calved after Sept. 1, 2022)
- 814. Jr Heifer Calf (Calved after Jan 1, 2023)
- 815. Champion \$50.00

**SHORTHORN**

- 820 Jr. or Sr. Heifer (Calved before March 1, 2022)
- 821. Spring Yearling Female  
(Calved March 1 to April 30, 2022)
- 822. Summer Yearling Female (Calved May 1 to Aug. 31, 2022)
- 823. Senior Heifer Calf (Calved after Sept. 1, 2022)
- 824. Jr Heifer Calf (Calved after Jan 1, 2023)
- 825. Champion \$50.00

**SIMMENTAL**

- 830 Jr. or Sr. Heifer (Calved before March 1, 2022)
- 831. Spring Yearling Female  
(Calved March 1 to April 30, 2022)
- 832. Summer Yearling Female (Calved May 1 to Aug. 31, 2022)
- 833. Senior Heifer Calf (Calved after Sept. 1, 2022)
- 834. Jr Heifer Calf (Calved after Jan 1, 2023)
- 835. Champion \$50.00

**CROSS BREED**

- 840 Jr. or Sr. Heifer (Calved before March 1, 2022)
- 841. Spring Yearling Female  
(Calved March 1 to April 30, 2022)
- 842. Summer Yearling Female (Calved May 1 to Aug. 31, 2022)
- 843. Senior Heifer Calf (Calved after Sept. 1, 2022)
- 844. Jr Heifer Calf (Calved after Jan 1, 2023)

- 845. Champion \$50.00
- 848. Reserve Champion \$100.00
- 849. Grand Champion \$150.00

**STEER**

Purse \$110.00  
1st \$50.00; 2nd \$40.00; 3rd \$30.00

**ANGUS**

- 850. Best Lightweight Steer
- 851. Best Heavyweight Steer
- 852. Champion \$25.00

**HEREFORD**

- 855. Best Lightweight Steer
- 856. Best Heavyweight Steer
- 857. Champion \$25.00

**SHORTHORN**

- 860. Best Lightweight Steer
- 861. Best Heavyweight Steer
- 862. Champion \$25.00

**SIMMENTAL**

- 865. Best Lightweight Steer
- 866. Best Heavyweight Steer
- 867. Champion \$25.00

**CROSSBREED**

- 870. Best Lightweight Steer
- 871. Best Heavyweight Steer
- 872. Champion \$25.00
- 878. Reserve Champion Steer \$100.00
- 879. Grand Champion Steer \$150.00

Note: The Junior Beef Department Superintendent will have final say on the division of Steer Classes based on actual weights in an attempt to even out class sizes.

**DAIRY DEPARTMENT**

Entry Fee \$15.00 on winners only.

Purse \$410.00

1st, \$50.00; 2nd, \$48.00; 3rd, \$46.00; 4th, \$44.00; 5th, \$42.00  
6th, \$40.00; 7th, \$38.00; 8th, \$36.00; 9th, \$34.00; 10th, \$32.00

- 880. Heifer, under 1 yr.
- 881. Heifer, 1 yr. old and under 2 yrs., (not in milk)
- 882. Cow 2 yrs. and older

**CLASS I-1  
RABBITS**

J.D. Sheridan, Superintendent Ph. 553-8889-

**Entry forms available at [www.crawfordfair.com](http://www.crawfordfair.com)**

Premiums Offered \$1,764.00

Entry Fee, \$4.50 on winners only.

Purse \$46.00

1st, \$13.00; 2nd, \$12.00; 3rd, \$11.00; 4th, \$10.00

**SHOW RULE**

**Show will be according to ARBA rules and regulations**

1. The Crawford County Fair Association will not be responsible for loss in case of fire or theft, accidents or destruction. However, every precaution will be taken to eliminate all dangers of mistakes in the show room and return of stock.
2. This association reserves the right to substitute another judge in case of inability to officiate.
3. All stock must be permanently earmarked.
4. The judge's decision will be final.
5. All diseased animals will be prohibited.

# CHARLEY INC.

## CSYSTEMS

Computer Systems • Networking • Consulting  
Service • Support

*Tony C. Schrey*

P.O. Box 280 • 1214 N. Allen Street  
Robinson, IL. 62454

618-546-5442 • email: charley1@midwest.net

6. Open to State of Illinois and surrounding States
7. Pens should be reserved by Wednesday, July 19, 2023.
8. Entries are to be started on or before 6 p.m., Saturday, July 22, 2023.
9. Entries are to be started on or before 6 p.m., Saturday, July 22, 2023.

Rabbits must be on the grounds by 10:00 pm Sunday, July 23, 2023.  
Release Wednesday, July 26, 2023 after 10:00 pm. per 72 hour rule  
per the STATE OF ILLINOIS

10. Rabbit Show Judging July 25, 2023- 10:00 A.M.

**Only Two Entries Permitted In One Premium Number per Class**

### MINI REX - ALL COLORS

- 900. Sr. Buck
- 901. Sr. Doe
- 902. Jr. Buck
- 903. Jr. Doe

### MINI LOP - ALL COLORS

- 910. Sr. Buck
- 911. Sr. Doe
- 912. Jr. Buck
- 913. Jr. Doe

### ALL OTHER BREEDS 4 CLASS

- 940. Sr. Buck
- 941. Sr. Doe
- 942. Jr. Buck
- 943. Jr. Doe

### SATIN - ALL COLORS

- 950. Sr. Buck
- 951. Sr. Doe
- 952. 6/8 Buck
- 953. 6/8. Doe
- 954. Jr. Buck
- 955. Jr. Doe

### CALIFORNIAN

- 960. Sr. Buck
- 961. Sr. Doe
- 962. 6/8 Buck
- 963. 6/8. Doe
- 964. Jr. Buck
- 965. Jr. Doe

### ALL OTHER BREEDS 6 CLASS

- 990. Sr. Buck
- 991. Sr. Doe
- 992. 6/8 Buck
- 993. 6/8. Doe
- 994. Jr. Buck
- 995. Jr. Doe

### BEST - ANY BREED

- 1000. Best Fur, - All Varieties \$10.00, \$9.00, \$8.00
- 1001. Best Doe and Litter, under 8 wks. \$10.00, \$9.00, \$8.00
- 1002. Best meat pen, any 3 Rabbits 5lbs & under  
\$20.00, \$18.00, \$15.00, \$12.00
- 1003. Champion Rabbit \$15.00
- 1004. Reserve Champion \$10.00

## Class I- 2

### Poultry

#### BANTAM ... TERMS

Kelly Wells, Superintendent • Ph. 554-2475

**Entry forms available at [www.crawfordfair.com](http://www.crawfordfair.com)**

Premium Offered \$4165.00

Poultry Show Sunday, July 23 after 4-H

Entry Fee \$3.50 on winners only.

Purse - \$35.00

1st, \$11.00; 2nd, \$9.00; 3rd, \$8.00; 4th, \$7.00

**COCK**- Male bird over one year

**COCKEREL**- Male bird hatched after Jan. 1, 2023

**HEN**-Female bird over one year

**PULLET**- Female bird hatched after Jan. 1, 2023

Entries are to be started on or before 6 p.m., Saturday, July 22, 2023.

All entries will be released at 10 p.m. Wednesday, July 27, 2023

Any number of varieties may be shown by any one exhibitor

Pen may be entered also in single classes

**Only Two Entries Permitted In One Premium Number per Class**

### HAMBERG

- 1100. Cock
- 1101. Hen
- 1102. Cockerel
- 1103. Pullet

### PORCELAIN d'UCCLE

- 1110. Cock
- 1111. Hen
- 1112. Cockerel
- 1113. Pullet

### WHITE WYANDOTTE

- 1120. Cock
- 1121. Hen
- 1122. Cockerel
- 1123. Pullet

### ANY COLOR COCHING

- 1130. Cock
- 1131. Hen
- 1132. Cockerel
- 1133. Pullet

### SILVER DUCKWING

- 1140. Cock
- 1141. Hen
- 1142. Cockerel
- 1143. Pullet

### RED PYLE OLD ENGLISH

- 1150. Cock
- 1151. Hen
- 1152. Cockerel
- 1153. Pullet

### MILLE FLEUR d'UCCLE

**WEBER INSURANCE & REALTY  
BROKERS, INC.**



**Call Us** about the right insurance coverage  
for your individual needs.

**Auto Home  
Life Health and more**

**618-544-3156**

**121 W. Walnut St.  
Robinson, IL 62454**

1160. Cock  
1161. Hen  
1162. Cockerel  
1163. Pullet

**B.B. RED OLD ENGLISH**

1190. Cock  
1191. Hen  
1192. Cockerel  
1193. Pullet

**SILVER LACED WYANDOTTE**

1210. Cock  
1211. Hen  
1212. Cockerel  
1213. Pullet

**BLACK TAIL JAPS**

1220. Cock  
1221. Hen  
1222. Cockerel  
1223. Pullet

**GOLDEN OR SILVER SEBRIGHT**

1230. Cock  
1231. Hen  
1232. Cockerel  
1233. Pullet

**ALL OTHER VARIETIES - OLD ENGLISH**

1240. Cock  
1241. Hen  
1242. Cockerel  
1243. Pullet

**SILKIES ANY COLOR**

1250. Cock  
1251. Hen  
1252. Cockerel  
1253. Pullet

**SPECIAL AWARDS**

1258. Champion Goose \$8.00  
1259. Champion Turkey \$8.00  
1260. Champion Cock, any breed \$8.00  
1261. Champion Hen, any breed \$8.00  
1262. Champion Cockerel, any breed \$8.00  
1263. Champion Pullet, any breed \$8.00  
1266. Champion Bird of Show \$15.00  
1267. Champion Call Duck \$8.00  
1268. Champion Game Bird \$8.00

**STANDARDS... TERMS**

Purse - \$35.00  
Entry Fee \$3.50 on winners only  
1st, \$11.00; 2nd, \$9.00; 3rd, \$8.00; 4th, \$7.00  
**COCK**- Male bird over one year  
**COCKEREL**- Male bird hatched after Jan. 1, 2023  
**HEN**-Female bird over one year  
**PULLET**- Female bird hatched after Jan. 1, 2023  
**PAIR**- One male and one female, same age and variety  
Any number of varieties may be shown by any one exhibitor  
Pen may be entered also in single classes  
All entries will be released at 10 p.m. Wednesday, July 27, 2023  
**Only Two Entries Permitted In One Premium Number per Class**

**BARRED PLYMOUTH ROCK**

1270. Cock  
1271. Hen  
1272. Cockerel  
1273. Pullet

**LIGHT BRAHMAS**

1275. Cock  
1276. Hen  
1277. Cockerel  
1278. Pullet

**CORNISH XX ROCKS**

1282. Cockerel  
1283. Pullet

**GOLDEN LACE WYANDOTTE**

1290. Cock  
1291. Hen  
1292. Cockerel  
1293. Pullet

**WHITE ROCK**

1296. Cock  
1297. Hen  
1298. Cockerel  
1299. Pullet

**TURKEY - ANY BREED**

1302. Cock  
1303. Hen  
1304. Cockerel  
1305. Pullet

**BLACK AUSTRALORPS**

1308. Cock  
1309. Hen  
1310. Cockerel  
1311. Pullet

**GUINEAS - ALL**

1320. Cock  
1321. Hen  
1322. Cockerel  
1323. Pullet

**ALL OTHER VARIETIES OF POLISH**

1330. Cock  
1331. Hen  
1332. Cockerel  
1333. Pullet

**RHODE ISLAND RED**

1340. Cock  
1341. Hen  
1342. Cockerel  
1343. Pullet

**ARCONDA**

1350. Cock  
1351. Hen  
1352. Cockerel  
1353. Pullet

**WHITE CRESTED BLACK POLISH**

1360. Cock  
1361. Hen  
1362. Cockerel  
1363. Pullet

**GOLDEN LACED POLISH**

1366. Cock  
1367. Hen  
1368. Cockerel  
1369. Pullet

**DUCKS - ANY CALL**

1372. Cock  
1373. Hen

**DUCKS - LARGE BREED**

1378. Cock  
1379. Hen

**QUAIL**

1384. Cock  
1385. Hen  
1386. Best Pair

**PHEASANT - ANY**

1390. Cock  
1391. Hen

**GEESE**

1393. Best Pair - Any Breed

**CLASS J  
AGRICULTURAL PRODUCTS**

Premiums Offered, \$2,125.00  
Superintendent, Marcie Pinkston PH. 618-616-0921  
Entry forms available at [www.crawfordfair.com](http://www.crawfordfair.com)

Class J entries will be in the large exhibit hall

- 1. Entries must be in place by 2 p.m., Sunday, July 23, 2023 and may be removed after 12 p.m., July 28, 2023



**Bio-Fuel • Distillers Grain • Distillers Oil  
ADDING VALUE TO LOCAL AGRICULTURE SINCE 2004**

**BUYING CORN DIRECTLY FROM THE FARM**

10406 N. 1725<sup>th</sup> Street  
Palestine, IL 62451

Contact us at

618-586-2321 or 888-586-2321

Visit us online at

[www.lincolnlandagrienergy.com](http://www.lincolnlandagrienergy.com)

**Enjoy the Fair**

2. Class J entries will be displayed in the exhibit hall.
3. Judging will be Sunday, July 23, 2023
4. Products must be grown by exhibitor.
5. Garden vegetable displays will be limited to 9 sq. ft. of table space.
6. Products shown must be grown in 2023 unless otherwise specified.
7. Exhibitor will be limited to 1 entry in any one class.
8. Entries close at 6 p.m., Saturday, July 22, 2023.

Ribbons given in all classes

### VEGETABLES AND FARM PRODUCE

Entry Fee \$2.50 on winners only.

Purse \$26.00

1st, \$8.00; 2nd, \$7.00; 3rd, \$6.00; 4th, \$5.00

1400. 10 Ears of Yellow Corn (2022)

1401. 10 Ears of White Corn (2022)

1402. Best 10 Ears of Corn, Any Variety

No Entry Fee-- 2022 Must Be Entered

1 Gallon in Glass Container

1403. Alfalfa
1404. Sweet Clover Seed
1405. Wheat
1406. Oats
1407. Soybeans (2022)
1408. Red Clover Seed
1409. Timothy Seed
1410. Flakes of Alfalfa Hay - bring in tub or clear plastic bag
1411. Flakes of Red Clover Hay - bring in tub or clear plastic bag
1412. Flakes of Grass Hay - bring in tub or clear plastic bag
1413. Bundle of Oil Soybeans, 10 plants, roots removed
1414. Bundle of Wheat - 4" diameter
1415. Bundle of Oats - 4" diameter
1416. Bundle of Clover - 4" diameter
1417. 10 Ears of Popcorn
1418. Sweet Corn, 5 Ears
1419. Tallest Stalk Of Corn - must have bag tied around roots
1420. Largest Sunflower Head
1421. Plate of 5 Potato Onions
1422. Potato Onion Sets (1qt.)
1423. Plate of 5 Red Onions





- 1424. Red Onion Sets (1qt.)
- 1425. Plate of 5 White Onions
- 1426. White Onion Sets (1qt.)
- 1427. Plate of 5 Yellow Onions
- 1428. Yellow Onion Sets (1qt.)
- 1429. 5 Pounds of White Potatoes
- 1430. 5 Pounds of Red Potatoes
- 1431. 5 Pounds of Sweet Potatoes
- 1432. Heaviest Pumpkin
- 1433. Heaviest Squash
- 1434. Heaviest Watermelon
- 1435. Head of Green Cabbage
- 1436. Head of Red Cabbage
- 1437. Cantaloupe (3)
- 1438. Plate of 5 White Radishes
- 1439. Plate of 5 Red Radishes
- 1440. Plate of 5 Slicing Cucumbers
- 1441. Plate of 5 Pickling Cucumbers
- 1442. Plate of 5 Yellow Peppers - Banana Type
- 1443. Plate of 5 Green Peppers - Bell Type
- 1444. Plate of 5 Red Peppers - Pimento Type
- 1445. Plate of 5 Hot Peppers (Hungarian, Jalapeno, Chili)
- 1446. Plate of 5 Yellow Tomatoes
- 1447. Plate of 5 Red Tomatoes
- 1448. Plate of 5 Turnips
- 1449. Plate of 5 Carrots
- 1450. Plate of 12 Purple Beans
- 1451. Plate of 12 Green Beans
- 1452. Plate of 12 Wax Beans
- 1453. Plate of 12 Pole Beans
- 1454. Indian Corn, 5 Ears
- 1455. Plate of 5 Beets
- 1456. Head of Cauliflower
- 1457. Plate of 5 Parsnips
- 1458. Plate of 5 Zucchini Squash
- 1459. Yellow Corn - 1 gallon glass jar
- 1460. White Corn - 1 gallon glass jar
- 1461. Longest Ear of Yellow Corn
- 1462. Rhubarb - 6 full stalks
- 1463. Crooked Neck Squash
- 1464. Yellow Summer Squash
- 1465. Best Display of Gourds
- 1466. Acorn Squash
- 1467. Best Decorated Vegetable
- 1468. Any Vegetable that is odd looking

#### SPECIAL AWARD

Best Of Show

- |                                |        |
|--------------------------------|--------|
| 1469. Vegetable & Farm Produce | \$5.00 |
| 1470. Vegetable Garden         | \$5.00 |

#### AMERICAN VEGETABLE GARDEN DISPLAY

This portion is offered for the benefit of those who are seeking to raise better gardens, and is in the interest of improved garden products.

Entry must be made by 6 p.m., Saturday, July 22, 2023

#### RULES AND REGULATIONS

1. **Entries must be in place by 2 p.m., Sunday, July 23, 2023 and be removed after 12 p.m. Friday, July 28, 2023.**
2. Exhibitor limited to only 1 entry in any one class.
3. All entries must be grown by exhibitor.

Ribbons given in all classes

Entry fee \$4.50 on winners only.

Purse \$45.00

1st., \$11.00; 2nd, \$10.00; 3rd, \$9.00; 4th, \$8.00

- 1471. Best Display of Garden Vegetables
- 1472. Market Basket Display. A plain or fancy basket of 1/2 bushel capacity, containing an assortment of Vegetables.
- 1473. New England Boiled Dinner Group-- Potatoes and 3 other Boiling Vegetables.
- 1474. Group of 6 Storage Vegetables. May be potatoes, sweet potatoes, root crops cabbage, onions, pumpkin and squash.
- 1475. Group of 8 Fresh Vegetables.
- 1476. Group of 6 and not more than 12 canned Vegetables, pt. or qts. from Garden.
- 1477. Collection of 6 Potted Garden Herbs.
- 1478. Artistic Dinner Table Arrangement, judged on percent basis; containers and decorations 20 percent, suitable vegetables 20 percent, arrangement of vegetables, 60 percent
- 1479. Holiday Arrangement of

## CLASS L Floriculture

Premiums Offered, \$2,370.00

Superintendent, Marcie Pinkston PH. 618-616-0921

**Class L entries will be in the large exhibit hall**

**Entries must be in place by 2 p.m., Sunday, July 23, 2023 and may be removed after 12 p.m., July 28, 2023**

Ribbons given in all classes

Anyone raising and selling flowers commercially is prohibited from showing

All flowers must be Home Grown

Entry must be made by 6 p.m. Saturday, July 22, 2023

Only one entry permitted in any one premium number

Class L entries will be displayed in the exhibit hall.

**Flowers must be in place by 2 p.m. Sunday, July 23, 2023**

**Judging will on Sunday evening**

Entries released 12 p.m. Friday, July 28, 2023

#### POTTED PLANTS

Entry Fee \$2.50 on winners only.

Purse \$26.00

1st, \$8.00; 2nd, \$7.00; 3rd, \$6.00; 4th, \$5.00

- 1499. Baby Tears
- 1500. Large Leaf Begonia
- 1501. Small Leaf Begonia
- 1502. Petunias
- 1503. Ivy
- 1504. Oxalis
- 1505. Coleus
- 1506. Philodendron
- 1507. Fern
- 1508. Geranium in Bloom
- 1509. African Violet
- 1510. Succulent
- 1511. Hanging Basket
- 1512. Window or Porch Box Display
- 1513. Cactus
- 1514. Sultana Impatients
- 1515. Gardenia
- 1516. Basil
- 1517. Thyme
- 1518. Rosemary
- 1519. Mint
- 1520. Sage
- 1521. Oregano
- 1522. Herb, other not listed
- 1523. Christmas Cactus
- 1524. Gloxinia
- 1525. Sedum

# MONICAL'S PIZZA RESTAURANT

- Our Famous Thin Crust And Pan Pizza
- Submarine Sandwiches • Breadsticks
- Pasta • Family Dining Atmosphere
- Carry Out & Table Service



**1703 W Main • Robinson, IL  
544-3228**

**[www.monicals.com](http://www.monicals.com)**

Open Daily 10:00 a.m.

**We Make Great Pizza!**

First Robinson Savings Bank  
is a proud sponsor of the  
82nd Annual Crawford County Fair



Member  
**FDIC**



- 1526. Mother -in -Law Tongue
- 1527. Airplane or Spider Plant
- 1528. Most Unusual Plant
- 1529. Terrariums

**CUT FLOWERS**

Flower Bouquets - Vase or Basket

**Must be in place by 2p.m. Sunday, July 23, 2023**

- 1530. Cosmos
- 1531. Dahlia
- 1532. Asters, all colors
- 1533. Cushion Mums
- 1534. Everlasting Flowers
- 1535. Carnations, not less than 6
- 1536. Pansies, not less than 6
- 1537. Phlos, not less than 6
- 1538. Verbena, not less than 6
- 1539. Petunias, single, not less than 6
- 1540. Petunias, double or fringe, not less than 6
- 1541. Zinnia, large, not less than 6
- 1542. Zinnia, small, not less than 6
- 1543. Snapdragon, not less than 6
- 1544. Cockscomb
- 1545. Marigolds, large
- 1546. Marigolds, small
- 1547. Sweet Peas
- 1548. Sun Flowers
- 1549. Cannas
- 1550. Salvia
- 1551. Hollyhocks
- 1552. Lilies
- 1553. Pinks
- 1554. Daisies
- 1555. Wild Flowers
- 1556. Two Color Flowers
- 1557. Flowering Shrubs
- 1558. Nasturtiums
- 1559. Dianthus

**CUT FLOWERS**

One Stem in a Vase

- 1560. Gladiolas, red
- 1561. Gladiolas, orange
- 1562. Gladiolas, yellow
- 1563. Gladiolas, purple/lavender
- 1564. Gladiolas, white/cream
- 1565. Gladiolas, green
- 1566. Gladiolas, pink
- 1567. Rose, red
- 1568. Rose, yellow
- 1569. Rose, pink
- 1570. Rose, white
- 1571. Rose, peach
- 1572. Rose, bi-color
- 1573. Rose, lavender / purple

**FRESH FLOWER ARRANGEMENTS**

- 1574. Basket
- 1575. Accent on Pink
- 1576. Patriotic
- 1577. Pitcher
- 1578. Asters
- 1579. Arrangement with 1 or more candles
- 1580. Accent on Yellow
- 1581. Daisies
- 1582. Study in Green, using different shades of green plant material
- 1583. Accent on Red
- 1584. Grandma's Garden
- 1585. White with Green
- 1586. High Style Arrangement over 12"
- 1587. Miniature Flowers
- 1588. Wild Flowers

- 1589. Ugliest Flowers
- 1590. Most Unusual & Artistic
- 1591. Petunias

**ROCK GARDENS**

- 1592. Miniature Rock Garden
- 1593. Fairy Garden
- 1594. Clay Pot
- 1595. Any Kind of Container

**DECORATOR WREATHS**

- 1596. Holiday
- 1597. Spring
- 1598. Summer
- 1599. Fall
- 1600. Winter
- 1601. Misc.
- 1602. Swags
- 1603. Fresh Scent ( Herbal Wreath using at least 5 different herbs - dried flowers maybe used )
- 1604. Theme Decorated ( Kitchen, Bathroom, Bedroom, Etc. )

**SILK FLOWER ARRANGEMENTS**

- 1606. Basket
- 1607. Patriotic
- 1608. Pitcher
- 1609. Arrangement with Candles
- 1610. Grandma's Garden
- 1611. High Style Arrangement ( over 12" )

**TABLE DISPLAY**

Each Exhibitor to Furnish Card Tables and Necessary Articles  
1st, \$11.00; 2nd, \$10.00; 3rd, \$9.00; 4th, \$8.00

- 1612. Table Setting and Arrangement

**SPECIAL AWARDS**

Best of Show

No Need To Enter

- 1613. Potted Plants \$5.00
- 1614. Cut Flowers \$5.00
- 1615. Arrangements and Wreaths \$5.00

**CLASS M**

**TEXTILES AND FINE ARTS**

Superintendent, Dale Davis, PH. 618-592-3883

Floral Hall: Open Monday. - Thursday from 5:00 P.M. - 8:00 P.M.

**Entry forms available at [www.crawfordfair.com](http://www.crawfordfair.com)**

Premiums Offered \$5,830.00

**Entries must be in place by 2 p.m., Sunday, July 23, 2023 and may be removed after 12 p.m., July 28, 2023**

Entry Fee \$2.50 on winners only.

Purse \$26.00

1st, \$8.00; 2nd, \$7.00; 3rd, \$6.00; 4th, \$5.00

Professionals cannot enter

All articles that have been exhibited three years or more will not be judged.

Entries Close 6 p.m. Saturday, July 22, 2023

Floral Hall will be open 8:00 a.m. - 6:00 p.m. Saturday, July 22, 2023 and 8:00 a.m. - 2:00 p.m. Sunday July 23, 2023 to accept entries.

Items must be homemade not purchased

Only one entry permitted in one premium number

No one article can be entered for more than one premium

Anybody picking up items for another exhibitor must have a signed statement.

### ORIGINAL PICTURES - READY FOR HANGING

**Must Have Hook or Wire for hanging**

- 1700. Oil Painting (Wildlife)
- 1701. Oil Painting (Landscape)
- 1702. Oil Pastel Drawing
- 1703. Oil Painting (Portrait)
- 1704. Oil Painting (Still Life)
- 1705. Acrylic Scenery
- 1706. Acrylic (Portrait)
- 1707. Acrylic (Still Life)
- 1708. Acrylic (Landscape)
- 1709. Water Color
- 1710. Pencil Drawing
- 1711. Charcoal Drawing

### AMATEUR PHOTOGRAPHY

1. This exhibition is open to all living amateur photographers, and all entries must be original work, taken by person who enters.
2. Each print or group of prints is to be marked as to which class it is to be entered.
3. Prints must be mounted on poster paper, or similar material, with name or information of subject printed or plainly written, below print. (May include time, place or reason for taking print.) **No Frames Accepted, must be ready to hang with wire .**
4. Exhibitor's name must be written on BACK of print, mat or poster.
5. All entries must be made on regular Fair forms, before 6 p.m. Saturday, July 22, 2023.
6. Entries must be in place by 2

p.m. Sunday, July 23, 2023 and may not be removed before Friday, July 28, 2023 at 12 p.m. of that same week.

7. Judged on cleanness of subject and detail of composition.

### BLACK AND WHITE AND/OR COLOR PRINTS

- 1720. Person and/or Group
- 1721. Animals
- 1723. Still Life

### MOUNTED COLLECTION IN COLOR

Definition of Subject: A collection or group of not less than 6 or not more than 12, all mounted on one poster, mat or other similar material. Name of subject shall be printed or clearly written, under prints, to tell story of same. This is called Essay and should tell a story.

**No Frames Accepted, must be ready to hang with wire .**

### COLLECTION IN COLOR/BLACK & WHITE

- 1724. Vacation Trip
- 1725. Sports
- 1726. Home Scenes
- 1727. Human Interest
- 1728. Water Scenes

### SOMETHING MADE OUT OF:

- 1729. Pizza Pan
- 1730. Chicken Wire
- 1731. Tomato Cage
- 1732. Cookie Sheet (Aluminum Throw Away)



3 M Farms  
11969 N 150th St  
Oblong, Ill. 62449  
618-592-4101



### FARMHOUSE SIGNS

- 1735. Vinyl
- 1736. Wooden
- 1737. Painted

### CERAMICS (STAINS)

- 1740. Figurines, Statue, Dolls
- 1741. Lamps, Vases, Planters
- 1742. Animals
- 1743. Novelties

### STAINED GLASS

- 1745. Flower
- 1746. Animals
- 1747. Holiday
- 1748. Misc.

### YARD DECORATIONS

- 1750. Bird Bath
- 1751. Bird Feeder
- 1752. Mushrooms
- 1753. Something made with Solar Lights

### STAMP ART

- 1755. Cards
- 1756. Stationary
- 1757. Gift Bags
- 1758. Misc.

### YARD ART

- 1760. Recycled Garden Art
- 1761. Recycled Garden Sculpture
- 1762. Flowers

### TERRA COTTA CLAY POTS CRAFTS

- 1763. Bird Bath
- 1764. Bird Feeder
- 1765. Bird House
- 1766. Decorated Pots, - Halloween (ghost, witches, scarecrow, etc.)
- 1767. Decorated Pots, - Christmas (Santa, snowman, angel, etc.)
- 1768. Misc.

### NOVELTIES

- 1770. Bookmarks and Key Rings, Coasters, etc.

- 1771. Tissue Box, Book Cover
- 1772. Something made out of Canvas
- 1773. Hair Accessories - (bows, bands, clips, etc.)
- 1774. Something made out of a Sock
- 1775. Pillow Topper
- 1776. Wind Chimes
- 1777. Picture frame
- 1778. Misc.

### PICTURES

(Ready to Hang, Framed Required)  
Must Have Hook On It

- 1790. Painted or Stenciled Fabric
- 1791. Soft Sculpture (Shadow Quilted, Trapunto, etc.)
- 1792. Crocheted
- 1793. Cross-Stitch

- 1794. Chicken Scratch
- 1795. Primitive Embroidery, (backstitch)

### HAND BAGS/PURSES/TOTE BAG

- 1800. Crocheted
- 1801. Misc.
- 1802. Knitted
- 1803. Fabric
- 1804. Beaded

### JEWELRY

- 1805. Necklace
- 1806. Earrings
- 1807. Bracelet
- 1808. Jewelry Holder

### DOLLAR TREE DIY

- 1810. Plastic Fencing
- 1811. Chandelier
- 1812. Plant Stand
- 1813. Silver Trays
- 1814. Lanterns

### PAPER CRAFTING

- 1820. Cards
- 1821. Table Accessories
- 1822. Origami
- 1823. Misc.

### SCRAPBOOK



Custom Application  
Precision Ag Services

HUTSONVILLE  
[www.bunkerhillsupply.com](http://www.bunkerhillsupply.com)

Tru Bulk Seed  
Custom Seed Treating

# BRADFORD SUPPLY COMPANY

## MARKETS SERVED:

Industrial – Oilfield - Water Systems – Plumbing- Septic

## Branch Locations:

### **Robinson, IL.**

618-544-3171

### **Bridgeport, IL.**

618-945-2611

### **Salem, IL.**

618-548-0364

### **St .Elmo, IL.**

618-829-3240

### **Clay City, IL.**

618-676-1166

### **Grayville, IL.**

618-375-4441

### **Bloomington, IL.**

309-828-8313

### **Carmi, IL.**

618-382-5251

### **Princeton, IN.**

812-385-3431

### **New Harmony, IN.**

812-682-3250

### **Decatur, IL.**

217-429-9216

### **Powell, WY.**

307-754-5167

### **Riverton, WY.**

307-856-1355

### **Henderson, KY.**

270-827-1142

### **Gaylord, MI.**

989-731-9996

### **Sterling, IL.**

815-625-0937

## Corporate Office:

Robinson, IL. (618) 544-3171

*www.bradfordsupplycompany.com*



## Markets Served:

Fabrication – Machining – Industrial – Welding

OMAX Waterjet

Ph: 618-544-5861

*www.tristatemachine.net*

## **Supporting the Crawford County Fair and 4-H Club Members**

- 1825. Event
- 1826. Vacation
- 1827. Holiday
- 1828. School Days

**WOODWORKING**

No Item Is To Be More Than 27 Cubic Feet)

- 1835. Milled or routed Piece
- 1836. Whittled or Carved
- 1837. Wood Burning
- 1838. Metal Punching
- 1839. Misc.

**PRIMITIVES**

- 1846. Bird House
- 1847. Reed Basket
- 1848. Fabric Baskets
- 1849. Misc. Baskets
- 1850. Wine Bottle Decorations
- 1851. Decorated Gourds
- 1852. Bird House Gourds
- 1853. Wine Cork Crafts
- 1854. Decorated Basket
- 1855. Metal Painting (Buckets, Shovels, Water Cans, Etc.)
- 1856. Candleholders
- 1857. Something made with Wooden Beads
- 1858. Something made with Sea Shells
- 1859. Decorated Mason Jar Craft
- 1860. Decorated Window Frame
- 1861. Something made with Buttons
- 1862. Decorated Garden Chair
- 1863. Something made out of Clothes Hangers
- 1864. Painted Paper Mache Boxes
- 1865. Garland
- 1866. Handpainted Glass Jars
- 1867. Handpainted Lamps
- 1868. Wooden Lamp
- 1869. Decorative Wooden Angels
- 1870. Misc.
- 1871. Anything made out of something old
- 1873. Table Placecards
- 1874. Handmade Plaque
- 1875. DIY Tiered Trays (Decorated)
- 1876. Leathercraft
- 1877. Small Shutter Decoration
- 1878. Flower made out of Something Unusual
- 1879. Something Made out of Old Graters

- 1880. Folk Art Christmas Craft of any kind
- 1881. Wooden Holiday Figures
- 1882. Folk Art of any other Holiday Craft of any kind

**CUSTOM YOUR OWN DEORATED SHOE**

- 1885. Painted
- 1886. Jeweled
- 1887. Fabric

**HOLIDAY CRAFTS**

No Pictures

- 1890. Misc.
- 1891. Primitive Embroidery
- 1892. Christmas Tree Skirt
- 1893. Christmas Stocking
- 1894. Tree Ornament
- 1895. Stitched Christmas Item
- 1896. Thanksgiving Ideas
- 1897. Tree Topper
- 1898. Easter Ideas
- 1899. Independence Ideas

**DOLLS AND ANIMALS**

- 1900. Soft Sculpture Animal (Purchased Head, Hands, and/or Feet)
- 1901. Soft Sculpture (Completely Handmade Animal)
- 1902. Soft Sculpture (Completely Handmade Doll)
- 1903. Soft Sculpture Doll (Purchased Head, Hands, and/or Feet)
- 1904. Rag Dolls, Sock Dolls, etc.
- 1905. Crocheted (Purchased Head, Hands, and/or Feet)
- 1906. Mop Dolls

**DRESSED DOLLS**

- 1910. Crocheted Clothing
- 1911. Cloth Clothing
- 1912. Knitted Clothing
- 1913. Beaded Clothing
- 1914. Barbie Doll Clothing

**CLOTHING**

- 1915. Fancy Girls Dress
- 1916. Tutu Skirt
- 1917. Ruffled Jean Skirt
- 1918. Pillowcase Sun Dress
- 1919. Capri Panys Set
- 1920. Refashion an Old Sweater
- 1921. Misses / Women's Tunica
- 1922. Pajamas and Nightgown's



*Serving all your travel needs*

**BAILEY'S TRAVEL**

**Karen Bailey**

Travel Manager

Mike Bailey, Owner  
 902 W. Mulberry  
 Robinson, IL 62454  
 karen@baileys-travel.com

Lisa Kartawich  
 Tami Ochs  
 Paige Irvin  
 Rendi Bierman  
 Travel Consultants

Phone: 618-544-4988  
 Fax: 618-544-4944



- 1923. Decorative Vest
- 1924. Clothes made out of old Clothing
- 1925. T-Shirt Refashion
- 1926. Sweatshirt (Appliqued)
- 1927. Sweatshirt (Misc.)
- 1928. Costume - any
- 1929. Decorative Denim
- 1930. Misc.
- 1931. Jacket
- 1932. Embroidery

**BED SPREADS**

- 1935. Patchwork (Hand Quilted)
- 1936. Knitted
- 1937. Crocheted
- 1938. Baby Patchwork (Hand Quilted)
- 1939. Baby Crocheted
- 1940. Baby Knitted

**AFGHAN**

- 1941. Baby - Crocheted
- 1942. Baby - Knitted
- 1943. Crocheted
- 1944. Knitted
- 1945. Patchwork

**WALL HANGING (MACHINE QUILTED)**

- 1950. Appliqued
- 1951. Quilted
- 1952. Patchwork
- 1953. Misc.
- 1954. Burlap
- 1955. Primitive Embroidered

**WALL HANGING (HAND QUILTED)**

- 1956. Appliqued
- 1957. Embroidered
- 1958. Patchwork
- 1959. Quilted

**BABY ITEMS**

- 1965. Bibs
- 1966. Booties or Shoes
- 1967. Sweater Sets
- 1968. Baby Outfit
- 1969. Bonnet
- 1970. Mittens

**APRONS**

- 1971. Crochet
- 1972. Embroidered
- 1973. Tatting Trimmed
- 1974. Appliqued

**PLACE MATS/POT HOLDERS**

(Set of 2)

- 1980. Crocheted
- 1981. Patchwork or Appliqued
- 1982. Embroidered
- 1983. Misc.

**TOWELS**

(Show Only One)

- 1984. Embroidered
- 1985. Cross Stitch
- 1986. Appliqued

**TABLECLOTHS**

(36" or Larger Diameter/Square)

- 1990. Crocheted
- 1991. Painted

- 1992. Embroidery
- 1993. Crochet
- 1994. Cross Stitch
- 1995. Table Runners

**PILLOWS**

(Sealed in a Clear Plastic Bag)

- 2000. Primitive Embroidered
- 2001. Crocheted
- 2002. Candlewicking
- 2003. Patchwork
- 2004. Appliqued
- 2005. Quilted
- 2006. Cross-Stitch

**DOILIES**

( Under 36" Diameter/Square)

- 2007. Crocheted
- 2008. Embroidered
- 2009. Tatting Trimmed
- 2010. Knitted
- 2011. Solid Tatting

**DRESSER SCARF**

- 2015. Tatting Trimmed
- 2016. Painted
- 2017. Embroidered
- 2018. Cutwork
- 2019. Crochet
- 2020. Cross - Stitch

**PILLOW CASES**

- 2025. Embroidered
- 2026. Crochet or Tatting Trimmed
- 2027. Appliqued
- 2028. Machine Appliqued
- 2029. Cross Stitch
- 2030. Cutwork
- 2031. Monogram

**QUILTS (HAND QUILTED)**

- 2035. Primitive Embroidery
- 2036. Appliqued
- 2037. Patchwork or Pieced
- 2038. Cross Stitch
- 2039. Child
- 2040. Baby

**QUILTS (MACHINE QUILTED)**

- 2045. Cross Stitch
- 2046. Appliqued
- 2047. Patchwork or Pieced
- 2048. Baby
- 2049. Child

**SPECIAL AWARD**

Best Of Show  
No Need to Enter

- 2060. Pictures-- \$5.00
- 2061. Woodworking \$5.00
- 2062. Primitives \$5.00
- 2063. Afghan \$5.00
- 2064. Quilts \$5.00
- 2065. Needlework \$5.00

**CLASS O**

**Diary, Apiary, Culinary**

Floral Hall: Open Monday. - Thursday from 5:00 P.M. - 8:00 P.M.

Entry forms available at [www.crawfordfair.com](http://www.crawfordfair.com)

Entries must be in place by 2 p.m., Sunday, July 23, 2023 and may be removed after 12 p.m., Friday July 28, 2023

Premiums Offered \$4,000.00

Entries must be from 2022 and 2023 garden.

Only one entry permitted in any one premium number

Single entries cannot be grouped as Collections.

Canned vegetables and fruits not opened unless the judge deems it wise in some cases.

Floral Hall will be open 8:00 a.m. - 6:00 p.m. Saturday, July 22, 2023 and 8:00 a.m. - 2:00 p.m. Sunday July 23, 2023 to accept entries.

Entry Fee \$2.50 on winners only.

Purse \$26.00

1st, \$8.00; 2nd, \$7.00; 3rd, \$6.00; 4th, \$5.00

#### PRESERVES - 1 JAR EACH

Paraffin seal not excepted. Must be sealed with canning lid.

**All Entries Must Be Labeled**

- 2250. Apricot
- 2251. Peach
- 2252. Pear
- 2253. Cherry
- 2254. Strawberry
- 2255. Raspberry
- 2256. Pear Honey
- 2257. Plum
- 2258. Blueberry
- 2259. Blackberry
- 2260. Tomato

#### JAMS

- 2265. Blackberry
- 2266. Raspberry

- 2267. Strawberry
- 2268. Gooseberry
- 2269. Peach
- 2270. Grape
- 2271. Pear

#### JELLIES

- 2275. Blackberry
- 2276. Apple
- 2277. Grape
- 2278. Cherry
- 2279. Plum
- 2280. Raspberry
- 2281. Strawberry
- 2282. Peach

#### BUTTERS-- 1 PINT OR QUART

- 2290. Apple Butter
- 2291. Peach Butter
- 2292. Pear Butter

#### CANNED FRUITS-- 1 PINT OR QUART

- 2300. Peach
- 2301. Pears
- 2302. Cherry
- 2303. Rhubarb
- 2304. Raspberry
- 2305. Blackberry
- 2306. Gooseberry
- 2307. Apple
- 2308. Applesauce

#### CANNED VEGETABLES-- 1 PINT OR QUART

- 2310. Tomatoes
- 2311. Sweet Corn (pint) white
- 2312. Peas
- 2313. Beets
- 2314. Sweet corn (pint) yellow
- 2315. Green Beans
- 2316. Lima Beans
- 2317. Wax Beans
- 2318. Tomato Juice
- 2319. Mixed Vegetables
- 2320. Carrots
- 2321. Sauerkraut

#### PICKLES, CATSUP, ETC. -- 1 PINT OR QUART

- 2325. Sweet Pickles
- 2326. Pickled Beets
- 2327. Pimentos (pint)
- 2328. Mixed Pickles
- 2329. Dill Pickles, sour
- 2330. Green Tomato Pickles
- 2331. Bread and Butter Pickles
- 2332. Piccalilli (pint) relish
- 2333. Tomato Ketchup (pint)
- 2334. Spiced Fruit
- 2335. Spiced Vegetables
- 2336. Banana Sweet Peppers
- 2337. Lime Pickles
- 2338. Chili Sauce
- 2339. Corn Relish
- 2340. Salsa
- 2341. Zucchini Relish

#### BAKED GOODS

( All entries must have a clear cover)



# 701 S. RANGE OBLONG, IL



Signs, Screen Printing, Embroidery  
Laser Engraving & Dye Sublimation

# 618-592-4145

- Signs & Full Color Digital Printed Banners
- Custom Screen Printing T Shirts, Sweatshirts, Jackets, Sport Bags
- Custom Embroidery
- Race Car Graphics
- Laser Engraving Wood, Metal, Glass Plastic And More!
- Call for Quotes

**Baked goods are to be in place by 2 p.m. Sunday, July 23, 2023.**  
Three-fourths of each pie may be removed on Monday, July 24, 2023.  
Those not taken on Monday will be disposed.

**No Bake sale**

### HOMEMADE BREADS AND CANDY

- 2348. Blueberry Muffins - 6
- 2349. Bread - baked using a bread machine
- 2350. Zucchini Bread
- 2351. Pumpkin Bread
- 2352. Banana Bread
- 2353. Loaf of White Bread
- 2354. Loaf of Whole Wheat Bread
- 2355. Nut Bread, with Baking Powder
- 2356. Coffee Cake
- 2357. Bran Muffins - 6
- 2358. Cinnamon Rolls - 6
- 2359. Danish Rolls - 6
- 2360. Yeast Doughnut - 6
- 2361. Shaped Rolls - 6
- 2362. Dinner Rolls - 6
- 2363. Baking Powder Biscuits - 6
- 2364. Corn Bread
- 2365. Cake Doughnut - 6
- 2366. Jelly Roll
- 2367. Mints, 6 or more
- 2368. Peanut Brittle, 6 or more
- 2369. Chocolate Fudge, 6 or more
- 2370. Fudge, White, 6 or more
- 2371. Fudge, Peanut Butter, 6 or more
- 2372. Divinity, 6 or more
- 2373. Toffee, 6 or more
- 2374. Taffy, 6 or more

- 2376. Pop Corn Balls, 3
- 2378. Chocolate Covered - 6 or more
- 2379. Caramel Corn
- 2380. Tea Ring(yeast)
- 2381. Other Candy Not Listed

### PIES

All entries must have clear cover  
Take Home Monday

- 2390. Pie Shell (unfilled)
- 2391. Apple
- 2392. Cherry
- 2393. Peach
- 2394. Blueberry
- 2395. Pecan
- 2396. Rhubarb
- 2397. Raisin
- 2398. Pumpkin
- 2399. Blackberry
- 2400. Raspberry - ( Black or Red )
- 2401. Fruit, 2 or more
- 2402. Gooseberry
- 2403. Fruit Cobbler (any kind)

### CAKES

All entries must have a clear cover  
Take Home Monday

- 2409. Carrot Cake
- 2410. Apple
- 2411. Sponge or Chiffon (not iced)
- 2412. Angel food (not iced)
- 2413. Banana
- 2414. Chocolate
- 2415. Upside Down Cake
- 2416. White Cake

**Open early.  
Open late.  
Open when you  
don't feel great.**

---

# **W**alk in **Clinic**



**Open from 7 am to 7 pm Monday-Friday**  
*(closed 1-1:30 p.m. for lunch)*

**Open 8 a.m. to 1 p.m. Saturday & Sunday**

[www.crawfordmh.org](http://www.crawfordmh.org)  

Crawford Memorial Hospital complies with applicable federal civil rights laws and does not discriminate on basis of race, color, national origin, age, disability or sex. CMH does not exclude people or treat them differently because of race, color, national origin, age, disability or sex.

- 2417. Spice Cake
- 2418. Marble Cake
- 2419. Yellow Cake
- 2420. German Chocolate
- 2421. Lemon
- 2422. Orange
- 2423. Nut Cake
- 2424. Pound Cake
- 2425. 4 - Cup Cakes,
- 2426. Best Decorated
- 2427. Any Kind Not Listed

**COOKIES**

Not less than 8 in each entry  
Take Home Cookies Monday

- 2439. Drop Cookies
- 2440. Chocolate Chip
- 2441. No Bake
- 2442. Filled
- 2443. Bar Cookies
- 2444. Snicker Doodles
- 2445. Oatmeal
- 2446. Sugar
- 2447. Chocolate
- 2448. Peanut Butter
- 2449. Brownies - (no frosting)
- 2450. Fruit Cookie
- 2451. Pin wheels (any kind)
- 2452. Any Kind Not Listed
- 2453. Anything made with Pretzels

**SPECIAL AWARD**

Best of Show  
No need to enter

- 2470. Baked goods \$5.00
- 2471. Canned Goods \$5.00

**CLASS P - Jr. Show**  
**Gardening, Crafts, Education, Baking**

Marcie Pinkston PH. 618-616-0921

**Class P entries will be in the large exhibit hall**  
**Entries must be in place by 2 p.m., Sunday, July 23, 2023 and may**  
**be removed after 12 p.m., July 28, 2023**

Entries will close at 6 p.m. Saturday, July 22, 2023. Entries must be from 2022 and 2023 garden.

Only one entry permitted in any one premium number, **unless otherwise noted**

Single entries cannot be grouped as Collections.

Canned vegetables and fruits not opened unless the judge deems it wise in some cases.

Class P entries will be displayed in the exhibit hall.

Entry Fee \$2.50 on winners only.

Purse \$26.00

1st, \$8.00; 2nd, \$7.00; 3rd, \$6.00; 4th, \$5.00

**AGRICULTURE PRODUCTS**  
**VEGETABLES AND FARM PRODUCE**

**Ages 8 - 13**

- 2500. Potatoes - 3 on a plate
- 2501. Broccoli - 1 head on a plate
- 2502. Tomatoes - 3 on a plate
- 2503. Beans, snap, green pod - 6 on a plate
- 2504. Cabbage - 1 head on a plate
- 2505. Beets - 3 on a plate
- 2506. Cucumber - 2 on a plate
- 2507. Onions - 2 on a plate
- 2508. Peppers - 2 on a plate

Dressings

Mullen's

**Manufacturers of America's  
Finest French Dressings**



---

**Wishing Success  
To The Fair**

---

**J.D. MULLEN CO.**

**211 - 215 S. Main, Palestine, IL • 586-2727**

**Jeff Shaner**

[www.mullensdressing.com](http://www.mullensdressing.com)

**Manufacturer and Distributor of Mullen's Famous Dressing**

- 2509. Sweet Corn - 2 on a plate
- 2510. Zucchini - 2 on a plate
- 2511. Yellow Crookneck - 2 on a plate
- 2512. Other Summer Squash - 1 on a plate
- 2513. Biggest Pumpkin
- 2514. Biggest Zucchini
- 2515. Decorated Vegetable

**Ages 14 - 19**

- 2520. Potatoes - 3 on a plate
- 2521. Broccoli - 1 head on a plate
- 2522. Tomatoes - 3 on a plate
- 2523. Beans, snap, green pod - 6 on a plate
- 2524. Cabbage - 1 head on a plate
- 2525. Beets - 3 on a plate
- 2526. Cucumber - 2 on a plate
- 2527. Onions - 2 on a plate
- 2528. Peppers - 2 on a plate
- 2529. Sweet Corn - 2 on a plate
- 2530. Zucchini - 2 on a plate
- 2531. Yellow Crookneck - 2 on a plate
- 2532. Other Summer Squash - 1 on a plate
- 2533. Biggest Pumpkin
- 2534. Biggest Zucchini
- 2535. Decorated Vegetable

**FLORICULTURE**

**Entries must be from 2023 garden**  
**Entries must be grown by exhibitor**

**POTTED PLANTS**

**Ages 8 -13**

- 2550. Best Blooming Plant
- 2551. Best Foliage Plant
- 2552. Most Unusual Plant
- 2553. Hanging Basket
- 2554. Herb
- 2555. Ivy

**Ages 14 - 19**

- 2560. Best Blooming Plant
- 2561. Best Foliage Plant
- 2562. Most Unusual Plant
- 2563. Hanging Basket
- 2564. Herb
- 2565. Ivy

**CUT FLOWERS**

**Ages 8 -13**

- 2580. Bouquet of Assorted Flowers
- 2581. Gladiolas
- 2582. Roses



4237E. 1050th Avenue  
 Oblong, Illinois  
 618-562-6790

Our mission is to provide products and services to change the landscape of agriculture in a more efficient way



- 2583. Petunias, double or single
- 2584. Zinnias
- 2585. Marigolds
- 2586. Lilies
- 2587. Daises
- 2588. Sunflowers

**Ages 14 -19**

- 2600. Bouquet of Assorted Flowers
- 2601. Gladiolas
- 2602. Roses
- 2603. Petunias, double or single
- 2604. Zinnias
- 2605. Marigolds
- 2606. Lilies
- 2607. Daises
- 2608. Sunflowers

**FLORAL ARRANGEMENTS**

**Ages 8 - 13**

- 2620. General
- 2621. Miniature
- 2622. Wreath -Open
- 2623. Fairy Garden
- 2624. Rock Garden
- 2625. Study in Green

**Ages 14 -19**

- 2630. General
- 2631. Miniature
- 2632. Wreath -Open
- 2633. Fairy Garden
- 2634. Rock Garden
- 2635. Study in Green

**FINE ARTS**

**Ages 8 -13**

**All articles must be handmade and crafted after last year's fair**

**DRAWING**

**Pencil, Charcoal, Pen & Ink**

- 2640. All

**PAINTING**

Oil, Acrylic, Watercolor, Tempura, Crayola

- 2645. All

**PHOTOGRAPHY**

**Prints must be mounted on poster paper or similar material**

**Mounted Collection: Black & White, Color**

- 2650. Collection - 5 pictures or more

**Color or Black & White**

All Single Pictures

- 2655. Animal
- 2656. Single Person
- 2657. Public Interest

**WOODCRAFT, LEATHERCRAFT**

- 2660. Bird House
- 2661. Toy
- 2662. Misc.
- 2663. Leathercraft

**MISCELLANEOUS CRAFTS**

- 2664. Stamp Art
- 2665. Candle
- 2666. Beaded
- 2667. Jewelry
- 2668. Origami
- 2669. Recycle Art

**FINE ARTS**

# *ADAMS MEMORIALS*

Largest selection of mausoleums, monuments and markers.  
We have our own custom etcher on staff to better  
personilze your memorial.  
See our local sales office for more information.

Adams Memorials  
203 W. Main Street  
Robinson, Illinois 62454  
Ph: 618-544-2015  
Toll Free: 1-800-252-6547  
“Satisfaction guaranteed on all work”

Monuments • Markers • Mausoleums • Cemetary • Lettering • Statues • and • more

**Ages 14 - 19**

**DRAWING**

Pencil, Charcoal, Pen & Ink

2670. All

**PAINTING**

Oil, Acrylic, Watercolor, Tempura, Crayola

2675. All

**PHOTOGRAPHY**

Mounted Collection: Black & White, Color

2680. Collection - 5 pictures or more

**Color or Black & White**

All Single Pictures

2685. Animal

2686. Single Person

2687. Public Interest

**WOODCRAFT, LEATHERCRAFT**

2690. Bird House

2691. Toy

2692. Misc.

2693. Leathercraft

**MISCELLANEOUS CRAFTS**

2694. Stamp Art

2695. Candle

2696. Beaded

2697. Jewelry

2698. Origami

2699. Recycle Art

**TEXTILES AND CLOTHING**

**Ages 8 13**

2700 Dress

2701. Shorts or Slacks

2702 Blouse & Skirt

2703. Misc.

**Ages 14 - 19**

2710 Dress

2711. Shorts or Slacks

2712 Blouse & Skirt

2713. Misc.

**Ages 8 - 13**

2720. Pillow

2721. Needlework (any type)

2722. Knit/Crochet

2723. Misc.

2724 Hat / Scarf

2725. Pillow Case

2726. Crochet

2727. Pot Holder

**Ages 14 - 19**

2730. Pillow

2731. Needlework (any type)

2732. Knit/Crochet

2733. Misc.

2734 Hat / Scarf

2735. Pillow Case

2736. Crochet

2737. Pot Holder

**EDUCATION AND NATURAL HISTORY**

**No more than two entries per person per exhibit number**

**All work must be from recent school year.**

Keeping hopes high for generations.



618-592-4241

[www.fnbolney.com](http://www.fnbolney.com)



Proudly supporting the  
Crawford County Fair & 4-H







Dan, Brad and Doug Weger

**All artwork and written work must be mounted on poster board or similar material.**

**Ages 6 - 7**

- 2750. Coloring
- 2751. Drawing
- 2752. Painting
- 2753. Open

**Ages 8 - 9**

- 2760. Original Artwork
- 2761. Original Poem, Short Story, or Theme
- 2762. Fair Project / History / Science / Special
- 2763. Open

**Ages 10 - 11**

- 2770. Original Artwork
- 2771. Original Poem, Short Story, or Theme
- 2772. Written or typed report on person / place / thing
- 2773. Open
- 2774. Fair Project / History / Science / Special

**Ages 12 - 13**

- 2780. Original Artwork
- 2781. Original Poem, Short Story, or Theme
- 2782. Written or typed report on person / place / thing
- 2783. Open
- 2784. Fair Project / History / Science / Special

**Ages 14 - 19**

- 2790. Drawing
- 2791. Painting
- 2792. Written or typed report on person / place / thing
- 2793. Fair Project / History / Science / Special

**FOODS**

**Canned vegetables and fruits not opened unless the judge deems it wise in some cases.**

**Current year canned goods only.**

**Regular canning jars only**

**Jars must have lid and ring.**

**CANNED FRUIT**

**Ages 8 -13**

- 2800. Peaches
- 2801. Pears
- 2802. Apples
- 2803. Applesauce
- 2804. Misc.

**Ages 14 - 19**

- 2810. Peaches
- 2811. Pears
- 2812. Apples
- 2813. Applesauce
- 2814. Misc.

**PRESERVES**

**Ages 8 - 13**

- 2820. Jelly (any type)
- 2821. Marmalade or Preserve (any type)

**Ages 14 - 19**

- 2830. Jelly (any type)
- 2831. Marmalade or Preserve (any type)

**CANNED VEGETABLES**

**Ages 8 -13**

- 2840. Tomatoes
- 2841. Tomato - based products
- 2842. Misc.
- 2843. Beans
- 2784. Corn

**Ages 14 - 19**

- 2850. Tomatoes
- 2851. Tomato - based products
- 2852. Misc.
- 2853. Beans
- 2854. Corn

**RELISHES AND PICKLES**

**Ages 8 - 13**

- 2860. Sweet Pickles
- 2861. Sour or Dill
- 2862. Misc.
- 2863. Relish

**Ages 14 -19**

- 2870. Sweet Pickles
- 2871. Sour or Dill
- 2872 Misc.
- 2873. Relish

**Breads  
Ages 8 - 13**

- 2880. Banana
- 2881. Other Sweet Loaf
- 2882. Muffins - 3 on a plate
- 2883. White Loaf
- 2884. White Rolls - 3 on a plate
- 2885. Whole Wheat Loaf
- 2886. Whole Wheat Rolls - 3 on a plate
- 2887. Misc.
- 2888. Zucchini

**Ages 14 - 19**

- 2890. Banana
- 2891. Other Sweet Loaf
- 2892. Muffins - 3 on a plate
- 2893. White Loaf
- 2894. White Rolls - 3 on a plate
- 2895. Whole Wheat Loaf
- 2896. Whole Wheat Rolls - 3 on a plate
- 2897. Misc.
- 2898. Zucchini

**COOKIES - CAKE - PIE**

**Exhibit Three (3) on a plate.**

**Ages 8 - 13**

- 2910. All Regular
- 2911. Bars
- 2912. Decorated Cake or Cookie
- 2913. Pie

**Ages 14 19**

- 2920. All Regular
- 2921. Bars
- 2922. Decorated Cake or Cookie
- 2923. Pie

**PASTRY**

**Entries must have clear cover.**

**Ages 8 -13**

- 2930. Noodles
- 2931. Any Type

**Ages 14 - 19**

- 2932. Any Type
- 2933.Noodles.



**CLASS Q - 1  
TRACTOR PULL**

Tuesday, July 25, 2023 at 7.00 p.m.

Brett Neeley, Superintendent

618-562-0613

Weigh - in at Fairground from 5:00 - 7:00 P.M.

**Driver and one helper will receive a pit pass upon registration**  
1st place trophy; 2nd thru 8th, Rosette

**Old Skool**

Premium Offered \$750.00

Entry Fee \$25.00

1st, 165.00; 2nd, \$135.00; 3rd, \$120.00; 4th, \$100.00  
5th, \$80.00; 6th, 60.00; 7th, \$50.00; 8th, \$40.00

3001. Old Skool

**IPA N/A FARM TRACTOR**

Premium Offered \$1,200.00

Entry Fee \$25.00

1st, 300.00; 2nd, \$220.00; 3rd, \$160.00; 4th, \$120.00  
5th, \$100.00; 6th, \$80.00; 7th, \$70.00; 8th, \$60.00, 9th \$40.00, 10th \$30.00

3002. IPA N/A Farm Tractor

**IPA OUTLAW TRACTOR**

Premium Offered \$1,200.00

Entry Fee \$25.00

1st, 300.00; 2nd, \$220.00; 3rd, \$160.00; 4th, \$120.00



# CRAWFORD COUNTY INSURANCE AGENCY

105 West Missouri  
Oblong, IL 62449

*"Just a Matter of Trust"*

Office: 800-592-3553  
618-592-3553  
Fax: 618-592-4876



**LIFE • HEALTH • HOME • AUTO • FARM • COMMERCIAL**

5th, \$100.00; 6th, \$80.00; 7th, \$70.00; 8th, \$60.00, 9th \$40.00, 10th \$30.00

3003. IPA Outlaw Tractor

### IPA FARM STOCK

Premium Offered \$1,200.00

Entry Fee \$25.00

1st, 300.00; 2nd, \$220.00; 3rd, \$160.00; 4th, \$120.00  
5th, \$100.00; 6th, \$80.00; 7th, \$70.00; 8th, \$60.00, 9th \$40.00, 10th \$30.00

3004. IPA Farm Stock

### EPIC PULLING SERIES 3.0 LIMITED PRO DIESEL TRUCKS

Premium Offered \$5,000.00

3005. EPIC Pulling Series

Epic pulling series rules apply.

## CLASS R-1 WESTERN JR. SHOW

Premium Offered, \$6,802.00

Lauren Gullett, Superintendent, Ph: 618-562-0604  
Cassy Hooks, Co-Superintendent Phj: 618-553-9258

Entry forms available at [www.crawfordfair.com](http://www.crawfordfair.com)

All entries must abide by the ruling of the Superintendent.

Show at 10:00 a.m. Saturday, July 22, 2023.

Entries to be made before 9:00 a.m. Saturday, July 22, 2023.

No Exhibitor permitted more than two entries per class.

### ALL PONIES MUST BE KEPT TIED

**ALL HORSES AND PONIES THAT CRIB OR BITE MUST BE  
TIED AND HAVE CRIBBING COLLARS ON.**

Entry Fee of \$20.00 on winners only.

Maintenance Fee:- \$20.00 - 1per head

Pony up to 58" height, Horses over 58" in height.

Classes are 13 and under, 14- 19, and all ages -all ages up to 19 years of age.

Entries are to be started on or before 6 p.m., Saturday, July 22, 2023.

Horses must be on the grounds by 10:00 pm Sunday, July 23, 2023.

Release Wednesday, July 26, 2023 after 10:00 pm. per 72 hour rule per the STATE OF ILLINOIS

Open to Youth in Crawford and adjoining Illinois counties.

All size Ponies and Horses are eligible to participate.  
Purse \$358.00

1st, \$60.00, 2nd, \$56.00, 3rd, \$54.00, 4th, \$52.00,  
5th \$50.00 6th .45.00, 7th, \$40.00

3127. Pony Halter - Mare & Gelding, - Youth All Ages

3128. Horse Halter - Mare - Youth All Ages

3129. Horse at Halter - Gelding - Youth All Ages

### Break to work Arena

3136. Pony - Walk and Trot - Youth all ages.

3137. Horse -Walk and Trot -Youth 13 and under

3138. Horse - Walk and Trot - Youth14 -19

3139. Pony - Pleasure - Youth all ages

3140. Horse - Western Pleasure -Youth 13 and under

3141. Horse - Western Pleasure - Youth 14 - 19

3142. Pony and Horse Country Pleasure - Youth all ages

### Break to work Arena

3145. Pony - Barrel Race - Youth all ages

3146. Horse - Barrel Race - Youth 13 and under

3147. Horse - Barrel Race - Youth 14 - 19

3148. Pony - Pole Race - Youth all ages

3149. Horse - Poles - Youth 13 and under

3150. Horse - Poles - Youth 14 -19

3151. Pony - Fun Class - Youth all ages

3152. Horse - Fun Class - Youth 13 and under

3153. Horse - Fun Class - Youth 14 - 19





National-Oilwell

Mission Expendables

Hydril Dampeners

Hydroseal Relief Valves

Wheatley/Gaso

Crane Deming Pumps

Blancett Flow Meters

Barnes Submersible

Mission Pumps

Weg Motors

Baird Relief Valves

Hydra-Cell Pump

*"Providing quality Pumps and Repairs to the Illinois Basin"*

Large Inventory of new, used and reconditioned National-Oilwell and  
Wheatley/Gaso Replacement Parts

**Pump Repair Specialist, Inc.**

**10477 N. 450th Street - Oblong, IL 62449**

Phone: (618)592-6531

Fax: (618)592-6534

E-Mail: [gareld@pumprep.com](mailto:gareld@pumprep.com)

## CLASS R-2

### WESTERN SADDLE HORSES

Laci Pethel - Superintendent Ph: 618-553-8431  
Premiums Offered, \$5,030.00

All entries must abide by the ruling of the Superintendent.  
Read Rules and Regulations for entries.

Halter class will show at 1:00 p.m. Sunday, July 23, 2023

In case of cancellation, show will be scheduled for Saturday, July 29, 2023

All classes of Western horses will show in Horse Arena.

Each class will be open for entries until start of class.

No stall rent.

Coggins test papers must be available upon request

#### HALTER DIVISION

Entry Fee \$15.00 for each entry

Purse \$310.00

1st, \$100.00; 2nd, \$80.00; 3rd, \$70.00; 4th, \$60.00

3200. Mare all ages

3201. Gelding all ages

3202. Youth Showmanship - 18 and under

#### PERFORMANCE CLASS

Entry Fee \$15.00 for each entry

Purse \$315.00

1st, \$100.00; 2nd, \$80.00; 3rd, \$70.00; 4th, \$60.00

3210. Ladies Pleasure - 19 and over

3211. Walk - Trot Pleasure - 12 and under

3212. Junior Pleasure - 18 and under

3213. Men's Pleasure - 19 and over

3214. Country Pleasure - Horses from all other pleasure classes not eligible. Pleasure mules eligible for this class only

3215. Open Pleasure - 1st, \$120.00; 2nd, \$100.00; 3rd, \$90.00; 4th, \$80.00; 5th, \$70.00

3216. Adult Pole Bending - 19 and over

3217. Jr. Pole Bending - 18 and under

3218. Women's Barrel Race - 19 and over

3219. Jr. Barrel Race - 18 and under

3220. Men's Barrel Race - 19 and over

3221. Open Barrel 3D

1D - 1st, \$120.00; 2nd, \$110.00; 3rd, \$100.00

2D - 1 second less than 1D - 4th, \$80.00; 5th, \$70.00

Two fastest times in Division 2

3D - 1 second less than 2D - 6th, \$60.00; 7th, \$50.00

Two fastest times in Division 3

## CLASS U GOATS

Ed Mikeworth Superintendent Ph.618-553-8938

Entry forms available at [www.crawfordfair.com](http://www.crawfordfair.com)

Premiums Offered \$735.00

Goat classes open to the State of Illinois and Surrounding States

Entries close 6 p.m. Saturday, July 22, 2023

Entries are to be started on or before 6 p.m., Saturday, July 22, 2023.

Livestock must be on the grounds by 10:00 pm Sunday, July 23, 2023.

Release Wednesday, July 27, 2023 after 10:00 pm. per 72 hour rule per the STATE OF ILLINOIS

Goat judging will be Tuesday, July 25, 2023, after 4-H

See Rules Governing Goats for Entry and Exhibition

Entry Fee \$5.00 on winners

Maintenance Fee: \$4.00 Per Head

Purse \$55.00

First, \$17.00; Second, \$15.00; Third, \$12.00; Fourth, \$11.00

Stall Rent will be paid by all open show exhibitors.

**Only two Entries Permitted in One Premium Number**

## PYGMY

- 3300. Doe Kid under 6 months
- 3301. Doe Kid 6 months to 1 year
- 3303. Over 1 year dry
- 3304. Milking Doe
- 3305. Wether under 6 months
- 3306. Wether 6 months to 1 year
- 3307. Grand Champion \$5.00
- 3308. Reserve Champion \$5.00

## STANDARDS

- 3320. Doe Kid under 6 months
- 3321. Doe Kid 6 months to 1 year
- 3322. Milking Doe 1 year to 3 years
- 3323. Milking Doe 3 years and over
- 3324. 1 year and under 2 not in milk
- 3325. Wether under 6 months
- 3326. Wether 6 months to 1 year
- 3327. Grand Champion \$5.00
- 3328. Reserve Champion \$5.00

### IMPORTANT NOTICE FOR LIVESTOCK EXHIBITORS

All purebred livestock that is showing in the open show must have registration papers. No one will be permitted to exhibit in the open show without registration papers. The name of the exhibitor does not have to be the name that is on the registration papers. Herdsman papers will not be accepted. Only two entries per class can be made under one Social Security Number.

## OPEN MEAT GOAT SHOW

Ed Mikeworth Superintendent PH. 618-553-8938  
Saturday, July 29, 2023 10:00 a.m.

Premium Offered Total of Entry Fees + Pen Fees + \$100.00  
Entry Fee \$6.00 per entry per class (Paid in Advance and Paid at time of entry)  
Maintenance Fee: \$1.00 per head  
1st - 28%; 2nd - 22%; 3rd - 20%; 4th - 16%; 5th - 14%

Wethers will weighed and divided into two equal classes at 8:00 a.m.  
Registration and health papers must be available upon request.

### %DOES

- 3400. Junior Doe - 0 - 6 months old
- 3401. Junior Doe - 7 -12 months old
- 3402. Senior Doe - over 12 months and under 24 months old
- 3403. Senior Doe - over 24 months old
- 3404. Champion Junior % Doe \$10.00
- 3405. Champion Senior % Doe \$10.00
- 3406. Champion % Doe \$10.00

### FULLBLOODED AND PUREBRED DOES

- 3410. Junior Doe - 0 - 6 months old
- 3411. Junior Doe - 7 -12 months old
- 3412. Senior Doe - over 12 months and under 24 months old
- 3413. Senior Doe - over 24 months old
- 3414. Champion Junior Doe \$10.00
- 3415. Champion Senior Doe \$10.00
- 3416. Champion Doe \$10.00

### GROUPS

- 3420. Pair of Junior Does
- 3421. Pair of Senior Does
- 3422. Champion Pair of Does

### WETHERS

- 3430. Weight Class 1
- 3431. Weight Class 2
- 3432. Champion Wether \$10.00

### BUCKS

- 3433. 3-6 months
- 3434. 6-9 months

## PIG SCRAMBLE



7:00 p.m. - Monday, July 24, 2023

### RULES AND REGULATIONS

**No entries after 6:00 p.m. Monday July 24, 2023**

All entries must be turned into the office

Entry forms available at [www.crawfordfair.com](http://www.crawfordfair.com)

1. The Fair Association, nor the sponsors will be responsible for any accidents connected with this contract.
2. Each participant must secure application blank, and have it signed by parent or guardian, by 6 p.m. Monday, July 24, 2023. These must be then filed at the Secretary's office at the Fair Grounds.
3. Contestants must be between the ages of 6 and 15 years of age on Aug. 1 of the year in which they participate in the contest.
4. While one contestant has hold of a pig, no other contestants will be allowed to touch it. If two or more contestants catch at the same time, the pig will be turned loose.
5. The Scramble committee will select referees and judges in all cases under protest. The judges is final.
6. Unusual incidents arising affecting continuation of this project will be handled by committees of the Fair Association.
7. Decision of the Judges shall be final. In cases of question, arguments or unusual incidents, the Fair association shall be the final judge.
8. All pigs are property of the Crawford County Fair Association. Prize money will be awarded or determined by the Fair Association prior to the contest.

**Parents wanting to go to the starting area will be required to purchase a ticket**

**3 - 4 - 5 year olds require no application for rabbits**



## 2023 Demolition Derby Rules

Oblong, IL

Demolition Derby Supervisory Contacts:

Rodney Shook 618-421-2938

Kurt Knollenburg 618-554-5734

Austin Adams 618-562-9908

### Towing & Transporting

Towing and transporting DEMOLITION DERBY cars and trucks to and from the fairgrounds must meet highway safety codes. This is including: proper lighting controls, safety chains, tow bars, towing trailers, etc.

## Running for ALL CLASSES

Safety belts, Z-90 approved helmet, goggles or face shields are mandatory.

NO deliberate hitting on the driver's door. STRICTLY ENFORCED!

Vehicles must always have dependable brakes and boundaries including loading equipment must be observed. Any car shoved or driven out of bounds may immediately be disqualified if it is a safety hazard.

NO DRINKING OF ALCOHOLIC BEVERAGES on fairgrounds will be tolerated. Any driver or pit person under the influence of alcohol or drugs will be removed from the grounds. Coolers WILL BE checked AND confiscated if any alcohol is found.

No cars are permitted in the competition area before the heat in which they are competing.

A vehicle will be disqualified if a door comes open during the heat.

A one-minute limit is enforced by the track officials for restarts and making aggressive competitive contact with another car. Simple contact does not constitute combat and could be considered sandbagging.

All cars are to be removed from the Fairgrounds following the show or they will become the property of the Fair Association and the officials will have them removed. A removal deposit may be required in some cases.

A fire extinguisher in close reach in the driver's compartment is recommended.

There will be two inspections of cars. One in the pit area before the derby beings and the second immediately before entering for the feature. Heat race winners and feature winner cars will be re-inspected. If a car is suspected of any building violations associated with their class, monies WILL NOT be given.

Additional safety regulations may be imposed depending on track conditions.

NO VEHICLES WILL BE LOADED BY TRACK EQUIPMENT BETWEEN HEATS! DO NOT ASK!

This equipment is for track removal only, come prepared to have your car or truck loaded yourself. (i.e., winch, come along, Armstrong, etc.)

If cars do not have a number on them, they will NOT run. Every car needs a 20x20 roof sign!

**PASSENGERS ARE NOT ALLOWED IN MINI CARS, MINI TRUCKS, AND TEAM CARS! ALL OTHER CLASSES MAY HAVE PASSENGERS!**

**Passengers MUST be 18 years of age!!! NO EXCEPTIONS!!**

**Passengers MUST sign a release form at check in.**

**Passengers MUST show a VALID ID TO PROVE AGE OR YOU WILL NOT RIDE!!**

All classes can use an unlimited amount of number 9 wire double strand anywhere on the car outboard of radiator. (No number 9 wire may be used on suspension in wire class.)

If the rules say you can do it, then do it. Do not read the rules and try to interpret rules to fit your needs! JUDGES HAVE FINAL SAY! If you have questions CALL the inspectors.

The driver MUST sign in before going through inspection. Once you sign in NO REFUNDS WILL BE GIVEN! You have three chances to pass inspection! After the third trip or 6:00pm you will NOT be allowed to compete, and you WILL forfeit your entry fee.

Entry Fees & Pit Passes:

Entry fee for drivers is \$40 per car and \$20 for passengers and \$20 for pit passes.

Payouts

Bonestock 1st 2nd 3rd

Chain & Wire Trucks 1st 2nd 3rd

Mini Trucks 1st 2nd 3rd

Compacts 1st 2nd 3rd

Powder Puff 1st 2nd 3rd

Modified Cars 1st 2nd 3rd

Modified Trucks 1st 2nd 3rd

2023 Compact Cars

If there are more than 15 cars, we MAY run heats! Cages are mandatory in Compact classes. 108" wheelbase on front wheel drives and 105" wheelbase on rear wheel drives. These wheelbase limits will be STRICTLY enforced! NO EXCEPTIONS!

**Pre-rans:**

Pre-rans may have 4, 4"x6"x1/4" plates. They MUST be on the outside of the frame and have a 1/2" gap between the welds.

## CRAWFORD COUNTY TITLE COMPANY, INC.

302 East Main St. • Robinson, IL 62454  
(618) 544-2112

## LAWRENCE COUNTY TITLE

1500 13th Street  
Lawrenceville, IL 62439  
(618) 943-4464

Issuing Agents For  
First American Title Insurance Co.  
Chicago Title Insurance Co.

Abstracts - Title Insurance  
Insured Closings

**SERVING ALL YOUR TITLE NEEDS  
IN CRAWFORD, LAWRENCE, AND WABASH  
COUNTIES**

### Engines and Transmissions:

No engine cradles are allowed. The engine may be welded at the factory location ONLY. Transmission crossmember can be no bigger than 2"x3"x 1/4" round or square. Transmission crossmember can be welded solid to rails or can have one piece of angle iron 2"x6"x 1/4" per rail. No gussets from crossmember to frame!

### Radiator:

No homemade radiators. Radiator protector can be wire mesh 1/4" thick fastened with 3/8" bolts to core support in four places TOTAL and cannot be welded. You may run manufactured radiator guards such as Nir or Ski Inc.

### Rust Repair:

For any rust repairs on the body or frame contact Rodney Shook @ 618-421-2938 BEFORE repairing or you will cut!!

### Hump Plates:

NO HUMP PLATES!

### Frames:

WHAT IS NOT ALLOWED:

NO FRAME SHAPING

NO PINNING THE FRAME

NO PAINTING THE FRAM

NO KICKERS

WHAT IS ALLOWED: you can weld the top and bottom frame seams from the firewall forward. Pass may not be any larger than 1/2" wide. DO NOT reweld the upper or lower A-Arm brackets when welding the frame seams. Frame may be shortened but must be able to utilize the factory core support mount in factory location. K-members can be plated TOP side only 3/8" thick max. Plates may not extend up on the frame rails. Fresh cars are allowed 2, 4"x6"x1/4" plates. One plate per frame rail and it MUST be on the outside of the frame.

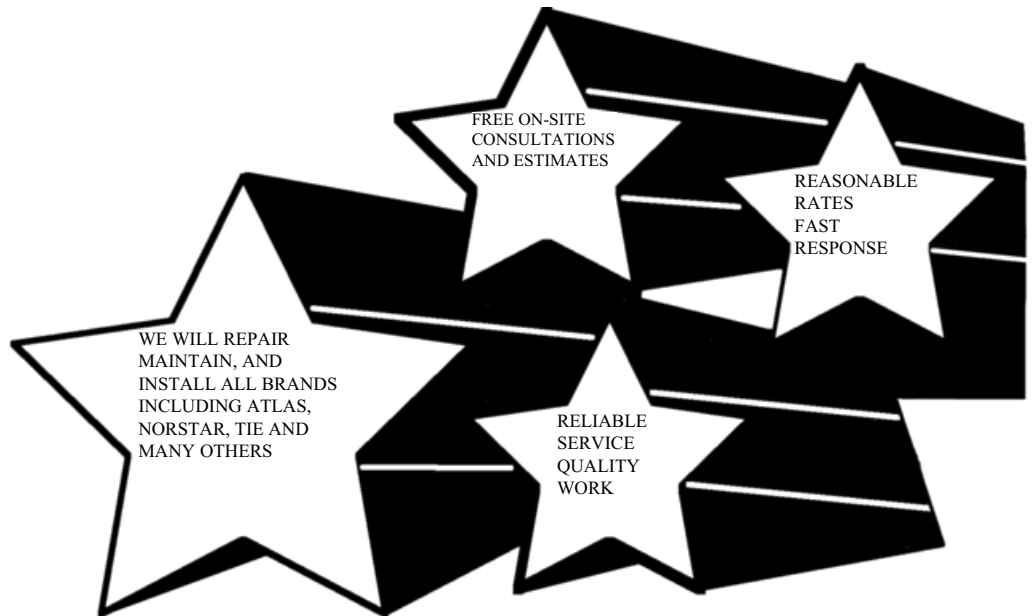
### Gate:

Door bars may extend from the firewall to the rear wheel well; they

# NEED A NEW TELEPHONE EQUIPMENT SERVICE PROVIDER

**FLAT ROCK TELEPHONE  
SPECIALIZES IN ALL YOUR  
COMMUNICATION NEED  
INCLUDING:**

- BUSINESS PHONE SYSTEMS
- PAGING SYSTEMS
- VOICE MAIL
- EXTENSION JACKS
- LINE SHARING
- CATEGORY 5 COMPUTER CABLING
- CLOSED CIRCUIT CAMERAS



**FlatRock**  
TELEPHONE CO-OP, INC.

## BUSINESS OFFICE HOURS & EMPLOYEES

Monday - Thursday..... 8:00 - 12:00 1:00 - 4:00

Friday 8:00 - 12:00

Barry Adair, General Manager

Amy Rich, Office Manager

## SERVICE & SALES OFFICE HOURS & EMPLOYEES

Monday - Friday .....8:00 - 12:00 1:00 - 5:00

Ronald Maxwell, Plant Manager

Vince Decker, Combinationman

Chris Duncan, Combinationman

Jachin Clark, Combinationman

## BOARD OF DIRECTORS

K. E Newell; President

Angela Bonnell; Vice President

Judy Branson; Secretary/Treasurer

Phil Goodman

Lynn McCleave

Warren Rich

Charles Siler

[www.frtci.net](http://www.frtci.net)

**104 North Rundle Street**

**Flat Rock, Illinois**

**Toll Free 1-888-372-4894**

Fax: 618-584-3210

email: [ron@frtci.net](mailto:ron@frtci.net)

# EARL DECKARD

## Crawford County Coroner

*Best Wishes For A Successful Fair*

may be running inside the doors to allow more room in the driver's compartment. Door bars must remain a minimum of 1" off the floor of the car. More than 1 door bar will be allowed per side. Only one of the door bars will be allowed to run in the rear wheel well. The 2nd door bar will only be allowed no further than 6" past the rear seam of the front door. Dash bar may be no larger than 4x4 and must remain 4" away from the firewall. Rear spreader bar may be no larger than 4x4" and may not be any further than 6" behind the driver's seat. All cage components must be a minimum of 4" off the floor, EXCEPT down bars and side door bars. You will be allowed 4 down bars. Down bars may not be any larger than 2x6x 1/4" and they MUST be welded to the door bars. The down bars must remain vertical and cannot extend higher than the door bar UNLESS being used as a rollover bar. These bars may be welded to the top side of the frame. They cannot cover any body mounts. You may plate the inside of the driver and passenger doors with material NO thicker than 1/4". No cage components may be welded to the frame except down bars mentioned above.

Rollover bars must be attached to the 4-point cage, must be vertical, and cannot be angled forward or backwards. Rollover may also be bolted to the roof with 5/8" bolts or smaller.

### **Fuel Tank:**

Metal fuel tanks only, no plastic tanks, NO exceptions! Your gas tank MUST be mounted inside the gas tank protector. If you are using an electric fuel pump you MUST have a lighted switch, NO exceptions! Fuel leaks of ANY kind will not be allowed or tolerated!! Make sure your tank, tank fittings, and fuel lines are snug and secure, absolutely NO ratchet straps to hold tank down, Tank MUST be bolted or chained, or you will NOT participate.

### **Fuel Tank Protectors:**

The tubing for the protector must be 4x4 or smaller. The protector must be NO wider than 32" and must be at least 4" off the floor and centered in the car. The protector may contact rear sheet metal of rear package tray and may also be attached to the package tray using 2, 5/8" bolts.

### **Core Support:**

Core support cannot be moved from the factory location. It must stay bolted to fenders in the same way it came from the factory. You may replace the core support bolt with 5/16" bolts and washers but only using the number of bolts it had from the factory. You core support spacers may be NO larger than 3x3 square tubing 1/4" thick, and tubing may pass through the core support. It may run from the top side of the core support. 1" all thread may be used for core support body mount and may be welded to the frame or the back of the bumper.

### **A-Arms:**

You can use two straps of 2"x6"x 1/4" per A-Arm. Must go from the top of the A-Arm to spring pocket ONLY! CANNOT have kickers to the frame behind the A-Arm or kickers at all!!

### **Struts:**

On the top and bottom they must be stock where they bolt on. However, you can sleeve the struts with no bigger than 3" diameter (round or square) tubing 1/4" thick.

### **Steering Components:**

You may use aftermarket spindles, ball joints, tie rods, drag link, and steering columns. Hydraulic steering is allowed.

### **Doors:**

Doors can be welded solid all the way around with no bigger than 4" x 1/4" from sheet metal to sheet metal. Front doors may be plated inside and out. If door is plated on the outside, door seam to door seam only 1/4" thick. If the door is plated inside, it may go from the sidebar to sheet metal only and no wider than the door seams.

### **Window Bars:**

Front Window: For safety, all cars must have 2 window bars extending from the roof to the firewall. Strap cannot be any larger than 3/8x3". The front strap must be at least 14" apart at the firewall. These straps must not come in contact with the dash bar or rollover bar in any way. These straps cannot be connected in any way unless your firewall is cut out



*Come Out to the Fair!*  
**LEE KINTNER & SONS**  
**Road Oil Contracts**



201 W. Wisconsin  
 Oblong, IL. 62449

**(618) 592-4532**



**Rear Window:**

You are allowed a rear window bar no larger than 3x3 square tubing. This bar must be centered in the car. The bar must run from rollover bar to trunk lid but must stay in contact with the front trunk seam. You may have a 4x6x 1/4" plate, NO LARGER on bottom of the bar connecting the bar to the trunk. The bar must stay on the outside surface of the trunk lid.

**Body Shaping:**

You may only crease/shape front fenders, rear quarter panels and trunk lid.

**Front Bumpers:**

Front bumpers can be homemade. On a homemade "POINTY" bumper the point may be no larger than 13" from the back of the bumper to the front of the point and no more than 8" tall. Point must be contoured from frame rails. The bumper height maximum is 29" to the top of the bumper.

FIRST OPTION FOR MOUNTING BUMPER: you may use the original shock tube. It may be welded to the frame. You cannot be welded any more than 10".

SECOND OPTION FOR MOUNTING BUMPER: you can use 4" wide by 3.8" thick plate extending from your bumper down the outside or top of frame rail. You may only choose 1 side; the plate cannot wrap around corners of the frame Plate must not extend any further back than the front most part of your top from A-Arm bracket. If there is no A-arm, then use the front most part of the strut. The plate may be reconfigured but must stay only 4" wide maximum where plate is welded to the frame. DO NOT ABUSE THIS RULE! YOU WILL FIRE UP YOUR TORCH TO CUT!!

THIRD OPTION FOR MOUNTING BUMPER: you can have 10" long shock tubes, no bigger than 3x3x 1/4" thick from the bumper back (it can be welded to the frame).

**Fenders:**

You may use 10 bolts 3/8" diameter per wheel on front and back. No skinning or added support of any kind is allowed.

**Hoods:**

You can use 6 pieces of 3/4" all thread to bolt hood down. This does not include the All thread that runs through the core support. You may use no more than 20 bolts in the hood no bigger than 3/8" diameter to hold sheet metal of the hood together.

HOODS MUST GO THROUGH INSPECTION WITH THE CAR AND MUST BE UNFASTED AND READY TO INSPECT!!!

**Rear Bumpers:**

Back bumpers can be homemade. No bigger than 6x6 square tubing, rectangle, or pipe. If you are using tubing for bumper, it must be STRAIGHT WITH NO POINT! Rear bumper height minimum is 13" from the ground to the bottom of the frame or bumper. This will be

measured from the closest point to the ground. The rear bumper can be attached to the frame using 4 pieces of 2x6, 1/4" plate. Meaning 2 per frame rail. If you choose to use a bumper shock to mount the bumper, you can weld 9" of the bumper shock to the frame, but NO 2x6 plate allowed.

**Trunk Lid:**

Trunk lids can be welded 5 on 5 off all the way around from sheet metal to sheet metal only. Strips may only be 3"x5"x 1/4" thick. You may have 4 pieces of all thread 1" in diameter. Two can be through the body mount holes and two can be welded to the frame. ALL THREAD MUST BE STRAIGHT UP AND DOWN! Must have two 6" holes or one 12" hole cut into trunk lid for inspection purpose. Inspection holes may have five 3/8 bolts holding inner and outer skin together.

**2023 MOD Cars**

Passengers are allowed, and a cage is required. NO Sedagons, Checkered Cabs, Limousines, or Hearses! If there are 15 or more cars, we WILL run heats!

**Front Bumpers:**

Front bumpers can be homemade. On a Homemade "POINTY" bumper the point may be no larger than 13" from the back of bumper to the front of point and no more than 8" tall. Point must be contoured from frame rails. The bumper height maximum is 29" to the top of the bumper.

FIRST OPTION FOR MOUNTING BUMPER: you may use the original shock tube. It may be welded to the frame, and the length of the shock tube.

SECOND OPTION: you can use 4" wide by 3/8" thick plate extending from your bumper down the outside or top of frame rail. You may only choose 1 side; the plate cannot wrap around corners of frame. Plate must not extend any further back than the front most part of your top front A-arm bracket. Plate may be reconfigured but must stay only 4" wide maximum where plate is welded to the frame. DO NOT ABUSE THIS RULE, YOU WILL FIRE UP YOUR TORCH TO CUT!!

**Rear Bumpers:**

Back bumpers can be homemade. No bigger than 6x6 square tubing, rectangle or pipe. If you are using tubing for bumper it must be STRAIGHT WITH NO POINT! Rear bumper height minimum is 13" from the ground to the bottom of the frame or bumper; will be measured from the closet point to the ground. The rear bumper can be attached to frame using 4 pieces of 2x6 1/4" plate. Meaning 2 per frame rail. If you choose to use a bumper shock to mount bumper; you can weld 9" of bumper shock to frame, but NO 2x6 plate allowed.

**Rust Repair:**

For any rust repairs on body or frame contact Rodney Shook @ 618-421-2938 BEFORE repairing.

**Frames:**

WHAT IS NOT ALLOWED:

NO FRAME SHAPING

NO PINNING FRAME

NO PAINTING FRAME

WHAT IS ALLOWED:

You can weld top and bottom frame seams from firewall forward. Pass may not be any larger than 1/2" wide. DO NOT reweld the upper or lower A-arm brackets when welding frame seams. Frame may be shortened but must be able to utilize the factory core support mount in factory location. K-members can be plated TOP side only 3/8" thick max. Plates may not extend up on frame rails.

You may pitch any year of car in 1 of 3 locations:

1st location – crush boxes: cutting the 3 flaps, and rewelding only where flaps were cut with 1/2" wide pass max.

2nd location – Transmission crossmember: no added material or fillers to weld frame together where pitched. 1 pass weld 1/2" wide.

3rd location – in front of firewall you can cut a v out of the bottom of the frame. Single bead to weld it back together. No added material to weld it together. These rules do not apply to 03 and newer Fords. See guidelines for them at the end of the rules set!

**Hump Plates**

You can have hump plates. Plates can be 22" long 6" tall and 3/8" thick. Plates must be centered in the hump; however, they do not have to follow the contour of the hump but must be on the outboard side of the frame.

**Cage:**

Door bars may extend from firewall to rear wheel well; they may be running inside the doors to allow more room in drivers compartment. Door bars must remain a minimum of 1" off the floor of car. More than 1 door bar will be allowed per side. Only one of the door bars will be allowed to run in the rear wheel well, the 2nd door bar will only be allowed no further than 6" past the rear seam of front door. Dash bar maybe no larger than 4x4 and must remain 4" away from firewall. Rear spreader bar may be no larger than 4x4" and must remain 4" away from firewall. Rear spreader bar may be no larger than 4/s" and may not be any further than 6" behind the driver's seat. All cage components must be a minimum of 4" off the floor, EXCEPT down bars and side door bars. You will be allowed 4 down bars, down bars may not be any larger than 2x6x1/4", the MUST be welded to the door bars. The down bars must remain vertical and cannot extend higher than the door bar UNLESS being used as a rollover bar. These bars may be welded to the top side of frame. They cannot cover any body mounts. You may plate the inside of driver and passenger door with material NO thicker than 1/4". No cage components may be welded to the frame except down bars mentioned above.

Rollover bars must be attached to the 4-point cage, must be vertical, and cannot be angled forward or backwards. The rollover bar may also be bolted to roof with 5/8 bolts or smaller.

**Gas Tank Protector:**

The tubing for the protector must be 4x4 or smaller. The protector must be NO wider than 32: and must be at least 4" off floor and in the centered in car. The protector may contact rear sheet metal of rear package tray and may also be attached to the package tray using 2- 5/8 bolts.

**Fuel Tank:**

Metal fuel tanks only, no plastic tanks, NO exceptions! Your gas tank MUST be mounted inside the gas tank protector. If you are using an electric fuel pump you MUST have a lighted switch, NO exceptions! Fuel leaks of ANY kind will not be allowed or tolerated!! Make sure your tank, tank fittings, and fuel lines are snug and secure, absolutely NO ratchet straps to hold tank down. Tank MUST be bolted or chained, or you will NOT participate!!!

**Core Support:**

Core support cannot be moved from the factory location. It must stay bolted to fenders in the same way it came from the factory. You may replace core support bolts with 5/16 bolts and washers but only using the number of bolts it had from the factory. Your core support spacers

may be NO larger than 3x3 square tubing 1/4" thick, and tubing may pass through core support. It may run from the top side of core support. 1" all thread may be used for core support body mount and may be welded to frame or back of bumper.

**Hoods:**

Can use 6 pieces of 3/4" all thread to bolt hood down. This does not include the All thread that runs through core support. You may use no more than 20 bolts in the hood no bigger than 3/8" diameter to hold sheet metal of hood together.

HOODS MUST GO THROUGH INSPECTION WITH THE CAR AND MUST BE UNFASTENED AND READY TO INSPECT!!!

**Trunk Lid:**

Trunk lids can be welded 5 of 5 off all the way around from sheet metal to sheet metal lonely. Strips may only be 3"x 5" x 1/4" thick. You may have 4 pieces of all thread 1" in diameter. Two can be through the body mount holes and two can be welded to the frame. ALL THREAD MUST BE STRAIGHT UP AND DOWN! Must have 2-6" holes or 1-12" hole cut into trunk lid for inspection purpose. Inspection holes may have 5-3/8 bolts holding inner and outer skin together.

**Fenders:**

You may use 10 bolts 3/8" diameter per wheel on front and back. No skinning or added support of any kind is allowed.

**Body Shaping:**

You may only crease/shape front fenders, rear quarter panels and trunk lid.

**Engines and Transmissions:**

No gussets from engine cradle, bell or transmission brace to frame other than engine crossmember. Transmission crossmember can be no bigger than 2"x3"x1/4" round or square. Transmission crossmember can be welded solid to rails or can have one piece of angle iron 2"x6"x1/4" per rail. No gussets from crossmember to frame! If you are not running a distributor protector, you can have 2x2 quarter inch thick square or round tubing from the dash bar to the top side of the frame 3" behind the rear of the top a-arm. If running kickers, the firewall must be cut out, so that no engine or cradle components will encounter firewall.

**A-Arms:**

You can use two straps of 2"x6"x1/4" per A-Arm. Must go from top A-Arm to spring pocket ONLY!

**Steering Components:**

You may use aftermarket spindles, ball joints, tie rods, drag link, and steering columns. Hydraulic steering is allowed.

**Radiator:**

No homemade radiators. Radiator protector can be wire mesh 1/4" thick fastened with 3/8" bolts to core support in four places TOTAL and cannot be welded. You may run manufactured radiator guards such as NLR or Ski inc.

**Doors:**

Doors can be welded solid all the way around with no bigger than 4"x1/4" from sheet metal to sheet metal. Front doors may be plated inside and out. If door is plated on the outside, door seam to door seam only 1/4" thick. If the door is plated inside, it may go from side-bar to sheet metal only and no wider than the door seams.

**Window Bars:****Front Window**

For safety, all cars must have 2 window bars extending from the roof to the firewall. Strap cannot be any larger than 3/8x3" flat strap and must be at least 14" apart at firewall. These straps must not come in contact with the dash bar or rollover bar in any way. These straps cannot be connected in any way unless your firewall is cut out.

**Rear Window**

You are allowed a rear window bar no larger than 3x3 square tubing. This bar must be centered in the car. The bar must run from rollover bar to trunk lid but must stay in contact with front trunk seam. You may have a 4x6x1/4" plate, NO LARGER, on bottom of bar connecting bar to trunk. The bar must stay on the outside surface of the trunk

# *37<sup>th</sup> Annual Oblong Antique Tractor and Engine Show*

**August 11, 12, & 13, 2023**

**Crawford County Fairgrounds  
Oblong, Illinois**

**Antique Tractor Pull - Friday 6:30 p.m.**

**Big Farm Toy Show**

**Friday 4 - 8 p.m.**

**Saturday - 9:00 a.m.- 5:00 p.m.**

**Pedal Tractor Pull - Saturday 10:00 a.m.**

**Parade of Power - Saturday & Sunday 1:15**

**Car Show: Sunday - 9:00 a.m. - 12:00 p.m.**

## **General Information**

**General Information • Mike Garrard 618-546-5615**

**Toy Show • Dave Dix 618-592-4139**

**Toy Show • Larry Dix 618-553-4753**

**Flea Market • Wendell Gene Bridget 618-928-1902**

**Tractor Pull • Jeremy Snider 618-843-2388**

lid.

## **Body Mounts**

Maximum of 1" all thread/bolts are allowed for body mounts. Plates for body mounts may be no larger than 4"x4"x1/4" plates. 1 extra body mount per rail is allowed inside the drivers compartment of the car.

## **Rear End:**

Any rear end 8-lug and smaller may be used and can only be chained in two places and may use 2 pieces of 1" or smaller all thread that goes from rear end through package tray to act as all thread shock.

## **Rear Suspension:**

Factory leaf spring cars, the leaf springs must be stock and made of stock leaf spring material. You may only have a total of 9 leafs per side and no thicker than 3/8". You are allowed 6 clamps per side with only 4 of the clamps being homemade. Homemade clamps cannot exceed 2/2 1/4". Factory coil spring cars: You can change springs to a stiffer spring to achieve desired height. Do not raise suspension in any other way. You can chain, bolt, or wire the coil spring to the rear end to prevent spring from falling out. The control arms can be reinforced or replaced with tubing no larger than 3/3" square tubing. Watts link conversion kits are allowed made with material no thicker than 1/4".

Leaf spring conversions are allowed. Conversions must be done in a factory-like manner. All leaf spring cars may have the leaf pack mounted under the frame rail. Under the frame rail mounts must be done with material no larger than 3"x4"x1/4" thick channel. No excessive metal can be used to frame reinforcements. Hump plates not allowed on leaf spring conversion cars.

Springs must have a 2" stagger. Springs cannot be welded together. Four (6) spring clamps allowed per side. Clamps cannot exceed 2x2x1/4.

## **Tires:**

Any 16" or smaller tire may be used. No studs in tires, no wheel eights, and no split rims AT ALL!

## **Battery Boxes:**

Two automotive batteries can be used but MUST BE secured and covered inside the driver's compartment of the car.

## **Pre-Rans:**

Re-stubbing pre-rans at crossmember ONLY and may only be butt-welded with NO added metal. No changing from coil to leaf or vice versa. May have on band-aid per wheel well 4"x6"x3/8". Band aid must be on a visible bend of the frame.

## **03 AND NEWER (Mod Cars ONLY):**

Using a stock aluminum cradle, you may not have anything going around the cradle. You may have a 1/4" plate going from side to side on top ONLY for engine mounting purposes and may NOY connect to the frame rails. OR you may weld in a factory engine crossmember from a 1980-2002 Ford, Crown Victoria, Grand Marquis or Lincoln Town Car ONLY. Single pass butt welds ONLY! To mount the upper A-Arm you must use the factory mounting ears from a 1980-2002 Ford to the top of the frame in FACTORY configurations. For the rear mount you must use the factory mounting bracket from a 1980-2002 as well. Single pass welds in factory configuration. SPRING POCKET. You are allowed to build a spring pocket and weld outside of the frame, ball joint side. This spring pocket can only be one lawyer thick and made of 1/4 inch plate. It cannot be any bigger than 6 inches in diameter. Spring pocket must be flat on top and only give the A-arm a spot to rest NOT to reinforce the A-arm. If I feel that you have over built the spring pocket, YOU WILL CUT. Must remain 1 inch from engine cradle. The plate must not be welded directly to the 3/8-inch front bumper plate. Must be a 1/2 inch gap between welds. The only thing that can be welded to the frame is the tubing. All crush zones MUST be open! To mount the idler arm on the passenger side frame rails you may only bolt through the inner rail with only two 1/2" bolts. No sleeving of bolts on this side, and no large washers.

To mount the steering box, you may drill three holes through the frame and bolt the steering box the same as it would be on the 1980-2002 cars. You may also sleeve these holes with a piece of round tubing no larger than 1/2" I.D. (1980-2002 use this exact same design to mount as well.) You may use any automotive gearbox of your choice if you stay within the mounting guidelines stated above.

You may pitch-tilt a 2003 and newer anywhere you want, but only in one spot and only in on direction! NO EXCEPTIONS! Absolutely NO welding on any frame seams at the crush boxes!!! Officials have the final say on this, if you have any questions call or send pictures before you attempt the build.

## **NON 03 (Mod Cars ONLY):**

You can have ONE 6"X6"X1/4" plate welded to the outside of the spring pocket on fresh cars (ball joint side of frame ONLY) The plate MUST NOT be welded directly to the 3/8" front bumper plate. Must be a 1/2" gap between welds. This plate WILL NOT count as one of your 4 fix it plates.

## **2023 Mod Trucks**

### **Engines & Transmissions:**

-Any motor or transmission in any vehicle.

-No gussets from engine cradle, bell, or transmission brace to the frame other than the engine crossmember.

-Skid plates allowed but can't extend more than a 1/2" from the pan they are protecting.

-Slider shafts are allowed.

-No rear ends bigger than a 3500 series pickup. If running a dually rear end you may only run one wheel per side.

-NO KICKERS AT ALL!!

### **Frames:**

-No pinning, plating, filling, stuffing, or painting;

-Frame may be seam welded. Single pass only.

-Pre-rans are allowed 6 plates total. Plates are only allowed on a visible bend and cannot be bigger than 4"x8" max with 1/2" gap between welds.

### **Cage:**

-4-point cage allowed and highly recommended.

### **Fuel Tank Protector:**

# SHOOKS WRECKER S/C.



***“Tow With the Pro”***

**Robinson, IL 62454  
618-546-1213**

# Palestine

---

Insurance Agency, Inc.



Summer Gaddis  
Insurance Producers



Missy York  
Owner/Agent



Steve Tracy  
Insurance Producers

## The Agency with a choice

Palestine Office:

101 S Main St, Palestine, IL 62449  
Phone: 618-586-2323

Robinson Office:

1106 N Allen St Robinson, IL 62454  
Phone: 618-544-2111

Visit us on the web at: [www.palestineins.com](http://www.palestineins.com)  
[melissa@palestineins.com](mailto:melissa@palestineins.com)

Auto – Home  
Farm – Crop Insurance  
Life – Health – Medical Supplements  
Commercial





# GRAIN FERTILIZER - CHEMICALS

804 W Main St  
Oblong, Illinois 62449

Oblong:	(618) 592-4211
St. Marie:	(618) 455-3202
Flat Rock:	(618) 584-3224
Palestine:	(618) 586-2141
Chauncey:	(618) 947-2231
Lawrenceville:	(618) 943-4047



1000 N Allen St Robinson, IL 62454  
 618-544-3131  
[www.crawfordmh.org](http://www.crawfordmh.org)

-Gas tank protectors allowed and is not to extend more than 36 inches from the front of the bed but can be full width of the bed.

**Suspension:**

- Front suspensions may be converted from coil spring design to leaf spring design. Keep the leaf springs mounts minimal. Do not use them to strengthen the frame.
- Tie rods can be welded up 1"x1"x1/4" Angle to tube of tie rod ONLY
- You may add 2 clamps in front of the axle and 3 behind the axle. Max of 2 bolts per clamp. Bolts can't be bigger than 3/8" and clamps can only be 2" wide. No duct tape or welding on the springs.
- Aftermarket steering shafts are allowed.
- Solid front suspensions are allowed but do not use this to strengthen the frame or you will need to cut it in order to run.

**Bumper/Bumper Mounting:**

- Homemade pointy bumpers must have a tapered point that closely resembles a Chrysler pointy bumper. No bigger than 13" point.
- Bumpers may be plated on the inside and on the backing of the bumper. No sharp edges.
- Any front bumper bracket may be used on any truck. If you choose to, you may make your shocks out of 2"x2" tubing.
- Absolutely no bracket or shock may be welded past 6 inches behind the factory core support mount hole on the frame rail. If your trucks factory shock or bracket goes farther than 6 inches back, it must remain completely factory beyond the allotted 6 inches.
- Bumper height is a maximum of 29 inches to the bottom of the front bumper and a minimum of 18 inches to the bottom of the rear bumper.

**Cabs:**

May be bolted to the bed with two bolts per side and may also be welded to bed sides.

**Body**

-Doors may be welded solid and cab can be welded to bed. (Please do

both!!!)

- All body bolts can be replaced and bolted solid with no bolts bigger than 3/4". Only exception is you may use 1" all thread in the core support and run it up through the hood. 4"x4" maximum body mount washer size.
- In addition to the 2 pieces of all thread in the core support, you will be allowed 4 more bolts to hold the hood down. Must be body to body only and the washers must not exceed 4"x4". Or you may use double stranded #9 wire in 8 spots. It must be body to body only.
- You may also run double stranded #9 wire from the front bumper to the hood or core support in 4 places only.
- No more than 10 3/8" bolts to hold your outer hood skin to your inner hood skin.
- Tailgates may be welded solid. You can add 6 all threads to the tailgate and bed to help hold it in place, 1" diameter all thread maximums.
- You may fold bedsides over from the wheel wells back and tailgate may be folded over
- If you choose to "tuck" a suburban or other long roof vehicle you may only attach the roof to quarter panels with 8 spots of double stranded 9 wire. Body to body only!!
- Ten 3/8" bolts per wheel well. Hardware washers only.
- For any rust repairs on the body or frame you must contact Rodney Shook at 618-421-2938 BEFORE repairing or you will cut!

**2023 Bonestock & Powder Puff**

**Body:**

- No sedagons, ZERO crease enhancement, ZERO sheet metal or frame shaping, forming, or folding. Deck and Hood must be 100% in stock location and open for inspection. After inspection you may tuck the trunk to the floor with one single 90-degree bend.
- Wagons ONLY if you remove your tail gate may have 6 places of wire, 2 strands max must be behind the axle sheet metal to sheet

metal only roof to floor.

-Anything can be removed; NOTHING can be added. ALL cars competing must have a hood on at all times to run.

-Fasten trunks, hood, tail gates in 6 places, 2 strands of 9# wire (Sheet metal to sheet metal only) or 6 locations using 1/2" bolts with store bought washers through the drip rail in the trunk. You may also use angle no longer than 2" long and a single 1/2" bolt to hold hoods shut.

-Door seams may have no more than 6" of weld, vertical seam only. Drivers' door may be welded 12 inches total on vertical seams only. 2"x 1/4" strap.

#### **Body Mounts:**

-You may have up to a 6" core support spacer (it may not be welded if it's metal).

-If you choose to change your core support mounts with 2 of your threaded rods, you get 3 plates, 1/4" x 5" x 5" max, 7, 5/8" nuts, 7, 3" oD max 1/8" thick washers per threaded rod CORE SUPPORT ONLY. If core support bolts are changed, this will count for 2 of your 6 mounts.

-Body Mounts and spacers to remain stock and in place. DO NOT EVEN TOUCH THEM! Exception, you may change a total of 6 body bolts out, with a 5/8" x 30" long threaded rod max with 3 nuts, 3, 5/8" store bought washers and 3, 5" x 5/4" thick plates per rod. Must be straight vertical rod only, no bends or angel pieces. Must have 1" rubber or metal spacer no larger than stock body pucks and all bottom nuts must be inside the frame. If they are broken or rusted out, a single piece of #9 wire may be substituted. ZERO welding allowed to mount this rod.

-Rusted out body bolts may be removed and replaced with a single strand of 39 wire.

-No attaching body bolts to any part of the cage/roll over bar.

#### **Frames:**

-No painting or undercoating.

-You may dimple your rear frame rails only to achieve the frame to roll.

-NO welding, bolting, wiring or adding any material/substance to strengthen frames. At Inspectors discretion frames will be drilled, wire wheeled or wiped down. Absolutely NO painting or spraying any material on frames or welds. Cars will not be inspected.

#### **Suspension & Steering:**

-You may weld 2 straps per upper A-Arm, 2" by 2" to maintain ride height.

-You may change coil springs to a stiffer oem passenger car spring.

-You may use store bought spring spacers (no homemade spacers or spacers on top of the springs.)

-You may use a single strand of #9 wire to hold coil spring to rear end. Leaf spring cars may use 4 single strands of #9 wire as leaf clamps per spring stack.

-All suspension and steering must remain stock (unless a modification is stated).

-Aftermarket steering columns and shafts are allowed. These components may not strengthen car in any way at any time.

-Tie rods maybe reinforced in only 1 of the following 2 ways:

1. Sleeve may be discarded, and pipe/solid rod tapped can be put in its place.
2. Factory sleeve and ends maybe welded and reinforced with steel. Tie rod ends must be factory ends and fit the spindle and drag link without reaming the holes larger. A store bought washer maybe placed over the stem of the tie rod and welded.

-Upper A arms may be interchanged as long as they are able to be bolted on. You may cut/trim to make fit but no welding on brackets etc. A arm must bolt on factory brackets of frame, no drilling new holes or enlarging existing holes. Example: 80-91 box ford a arms being installed on a 98-02. Cut the mounting bar out and trim the edges of the a arms to get height.

-Rear control arms may be changed but must be stock. You may shorten but max 2" overlap.

-98 up watt links conversion will be allowed only in the following way!! Upper trailing arm brackets must be bolted in. They must be 2 separate brackets, may not be larger than 6" x 12" x 3/8" thick max. 4, 5/8" bolts, nuts and 8 washers per bracket. Brackets may only be bolted to tow package and bolts may not stick thru the body. Brackets may not strength frame or body. NO WELDING AT ALL OF UPPER BRACKETS.

-98 up watt links LOWER BRACKET Conversion. Only 1 watt will be allowed to mount lower trailing arm bracket. 1 piece of square tube 3" x 3" x 3/8" x 3" long max per side of the frame may be used. Cut the square tube to make a C channel. It must be welded to the inboard of the frame at the point you want your trailing arm mounted. Drill your hole through the tube and only 1 thickness of the frame. Bolt your arm into place. No other bolts will be allowed to mount this bracket. No factory mounting brackets will be allowed to mount the trailing arms.

#### **Engines & Transmissions:**

-ANY drive train & transmission (manual transmissions allowed, no aftermarket bel housings, no trans brace, no mid plates, OEM transmission case only).

You may run a basic front plate and lower engine cradle with pulley protector, but it must be mounted to the car with OEM style mounts.

-No engine chains, unless approved with pictures.

#### **Rear Axle:**

-Any axle but it must be hung with factory type control arms.

-Rear end brace will be allowed.

-Pinion brake is ok.

-You may run 3/8" chain around rear end back to the frame with only each end of the chain welded back to the frame for ride height control. Any extra chain links or weld on the frame will cause you to run working suspension.

#### **Drivers Compartment:**

-4-point square cage only. 1 down tube in the center of each front door welded to sheet metal only. Nothing to the frame! Max 60" cage over all measurement. 6" max, must be mounted horizontally and 6" off the floor. Gussets only in the interior of the 4-point cage.

-Gas tank mount may be welded to the back bar, but the bar and fuel cell/tank must be 4" from the rear sheet metal. See below for mounting fuel tank/cell to floor.

-A Halo bar is allowed. Allowed 2, 1/2" bolts with 1/2" washers to attach to the roof. The halo bar may only be attached to the back seat bar or sidebars, not to the floor.

-Driver's door must be padded.

-Gas tank and batteries must be moved and secured. Tank behind the seat, Battery centered in eh passenger front floor.

-Nothing may be mounted in a way that strengthens the car.

-Trans coolers allowed. Must be mounted inside the 4-point cage area or the cage. Must be tight to the cage if mounted on the back bar.

#### **Bumpers:**

-You may hardnose front and rear bumpers if desired, but no shortening the rear frame. Follow the rules below if using a shock.

- may weld on any DI approved bumper (see below). Bumper brackets (in factory location) may be welded continuously to the frame 4" from the back of bumper only. In addition, you may put 4, 1" welds on the back side of the bumper brackets or weld shock inside frame (example Crown Vics).

-You may shorten 80 and newer Fords up to an inch in front of the core support mount you may also be hard-nosed.

-Call with special cars to mount bumper legally. Rear brackets on rear and front brackets on the front, or you may chain, 2 pieces of chain per side. Bolted from mount to mount to hold on the bumper.

-Bumper height must be 16" to 22" measured to the bottom of the frame at the back and front body mount location.

-Bumper may not exceed 9" x 9". BUMPERS are interchangeable for all cars. IF you start with a stock/replacement bumper you are allowed to re-enforce the inside of the bumper.

-Bumper must appear stock from the stands with no spike or protrud-



# **SMITHEURY**

## **Concrete Construction**

**SPECIALIZE IN A WIDE VARIETY  
OF DECORATIVE CONCRETE**

**RESIDENTIAL & COMMERCIAL**



Trenching



Field Tiling

Backhoe

***NEWTON, IL***  
***618-783-2108***

ing items.

-If your bumper will not fit in a factory skin, it is too big.

-You may weld the outer chrome skin to the bumper inner frame.

Bumpers may be cut to keep them out of the tires/no sharp ends.

Bumpers may be flipped upside down.

#### **Tires & Brakes:**

No tires taller than 30". 4 wheels max per car. No dual tires. No split rims, studded tires or 100% solid wheels, you may use aftermarket center with various bolt patterns, solid centers are fine Welds must be approved by judges on the rear tires. Stay off the area of the rim the tube touches, except to weld your center into the rim.

-Valve stem protectors allowed. Valve stem protectors may not extend more than 6" from the valve stem. Not allowed to be a rim protector. Inner bead locks must not extend past the stock tire bead area. Not to exceed 2" wide. 1' outer lip ring allowed on the outside bead.

-Doubled or foam filled tires allowed. All cars must be able to demonstrate the ability to stop at any time. If your brakes do not work, you will not compete.

-You may not change tires after inspection. Ride height will be measured with your competition tires only.

#### **2023 Chain & Wire Trucks**

A cage is mandatory! If there are more than 15 trucks, we MAY run heats! Any 2 wd ½ ton truck or SUV 4wd may be used but must remove the front driveshaft.

#### **Pre-Ran:**

May have 4 plates, 4"x6"x1/4" thick. You can put them anywhere you want (on the outside of the frame) ½' gap between welds.

#### **Drivetrain:**

You may crossbreed engines and transmissions. No engine cradles allowed. You may use aftermarket engine mounts. You may run a manual, but they must remain stock and be mounted within 5" of the factory locations. OEM driveshaft only. No sliders of any kind. Rear end gears may be welded. Must be a factory 6 lug or less. No bracing and No protectors of any kind are allowed!!! No coil to leaf spring conversions or vice versa.

#### **Frames:**

No painting, greasing, undercoating, welding, or fabrication of frames of ANY KIND! The ONLY welds to the frame are the bumper and engine fastening rules.

#### **Cage:**

A 4-point cage is allowed welded to sheet metal ONLY. Cage cannot go any further than 12" past the rear seat. The cage must have a halo touching the roof. All down tubes must be straight up and down and NO kickers.

#### **Fuel Tank:**

Metal fuel tank ONLY! NO plastic tanks! NO EXCEPTIONS! You may have a tank protector no bigger than 30" wide and must stay in front of the wheel humps. MUST BE FREE FLOATING!! If you use an electric fuel pump you MUST have a lighted switch. NO EXCEPTIONS! Fuel leaks of ANY kind will not be allowed or tolerated! Make sure your tank, tank fittings and fuel lines are snug and secure. Absolutely no ratchet straps to hold the tank down. Tank must be bolted or chained, or you WILL NOT PARTICIPATE!

#### **Battery Boxes:**

Two automotive batteries can be used but must be secured and covered inside the driver's compartment of the truck.

#### **Steering:**

You may use a homemade steering column.

#### **Suspension:**

Must be STOCK for type of truck it is. Must stay at original height to modifications MUST HAVE BOUNCE! No #9 wire may be used on the suspension.

#### **Body:**

No creasing or body shaping of any kind. No welding or bolting may be done to the body ANYWHERE! No removing or changing the body mounts is allowed, EXCEPT you may change your core support

body mount bolts and use up to 1" all thread and can go through the hood. No bigger than a 4x4, ¼" thick hood washer. NO sleeves on all thread. Hood can have four double stranded pieces of #9 wire sheet metal to sheet metal on each side ONLY. No wire can go through ANY of the body mounts. Two 8'x8' holes must be cut in the hood. You must have a windshield bar made of chain or wire from the roof to the firewall. Doors may be chained, wired, or welded on each seam in 2 places, 6" long.

HOODS MUST GO THROUGH INSPECTION WITH THE TRUCK AND MUST BE UNFASTENED AND READY TO INSPECT!!!

#### **Tailgates:**

Must remain in original position and may be wired or chained in 4 places.

#### **Bedsides:**

Must remain in upright position.

#### **Bumpers:**

Front bumpers can be homemade. On a homemade "pointy" bumper the point may be no longer than 13" from the back of the bumper to the front of the point and no more than 8" tall. Point must be contoured from frame rails. You may use 10" long square or round tube ¼" thick by 3" to mount the front bumper. Rear bumper must be factory bumper or taken off. You may weld the bumper skins and seams.

#### **Tires:**

No tires bigger than 16" and do NOT have to be D.O.T. tires. No studs in tires and no wheel weights. Rims must be stock, no bead locks, or full weld-in centers. No welding or adding metal. You may have a small weld in the center and valve stem protectors.

#### **2023 Mini Trucks, & Vans**

A cage is mandatory, and a halo bar is recommended. If there are more than 15 trucks, we MAY run heats!!! The 99 to 03 Durango will be allowed to run with mini trucks.

#### **Pre-Ran:**

Re-stubbing at the transmission crossmember ONLY and may ONLY be butt welded with NO added metal. Four additional plates, 4"x6"x ¼" thick. You can put them anywhere you want, (on the outside of the frame), ½" gap between welds. You can stub with a factory leaf spring or coil spring stub. Mini's must use a compact truck stub.

#### **Engines and Transmission:**

No gussets from engine cradle, bell, or transmission brace to the frame other than engine crossmember. Transmission crossmember can be no bigger than 2"x2"x1/4" round or square. Transmission crossmember can be welded solid to rails or can have one piece of angle iron 2"x6"x1/4" per rail. No gussets form crossmember to frame!

NO KICKERS AT ALL!!! Mini Trucks & Vans may only be four- or six-cylinder engines!!

#### **Radiator:**

No homemade radiators. Radiator protector can be wire mesh ¼" thick fastened with 3/8" bolts to core support in four places TOTAL and cannot be welded. You may run manufactured radiator guards such as Nir or ski inc.

#### **Rust Repair:**

For any rust repairs on body or frame contact Rodney Shook at 618-421-2938 BEFORE repairing or you will cut!

#### **Hump Plates:**

You can have hump plates on a coil spring rear end. Plates can be 22" long 6" tall and 3/8" thick. Plates must be centered in the hump; however, they do not have to follow the contour of the hump but must be on the outboard side of the frame.

#### **Frames:**

WHAT IS NOT ALLOWED: NO FRAME SHAPING, NO PINNING FRAME, AND NO PAINTING FRAME!

WHAT IS ALLOWED: You can weld the top and bottom frame seams from firewall forward. Pass may not be any larger than ½" wide. DO NOT reweld the upper or lower a-arm brackets when welding the frame seams. Frame may be shortened but must be able to utilize the factory core support mount in the factory location. Crossmembers can be plated TOP side only, 3/8" max. Plates may not

extend up on the frame rails. You can have 2, 4x6x1/4" thick plates (one per frame rail) on a fresh truck. You cannot put leaf springs under a coil spring frame or coils under a leaf frame. Mini Trucks MUST BE on a MINI Frame. Body and frame must be Ford on Ford, Chevy on Chevy, and so on.

You may pitch any year of car in 1 of 3 locations:

1st Location: Crush boxes: cutting the 3 flaps, and rewelding only where flaps were cut with 1/2" wide pass max.

2nd Location: Transmission crossmember: no added material or fillers to weld the frame together where pitched. 1 pass weld 1/2" wide.

3rd Location: in front of the firewall, you can cut a v out of the bottom of the frame. Single bead to weld it back together. No added material to weld it together.

#### **Cage:**

Door bars may extend from the firewall to rear wheel well; they may be running inside the doors to allow more room in drivers compartment. Door bars must remain a minimum of 1' off the floor of trucks! More than 1 door bar will be allowed per side. Only one of the door bars will be allowed to run in the rear wheel well. The second door bar will only be allowed no further than 6" past the rear seam of front door. Dash bar may be no larger than 4x4 and must remain 4" away from firewall. The rear spreader bar may be no larger than 4" and may not be any further than 6" behind the driver's seat. All cage components must be a minimum of 4" off the floor, EXCEPT down bars and side door bars. You will be allowed 4 down bars. Down bars may not be any larger than 2x6x1/4" and must be welded to the door bars. The down bars must remain vertical and cannot extend higher than the door bar UNLESS being used as a rollover bar. These bars may be welded to the top side of the frame. They cannot cover any body mounts. You may plate the inside of the driver and passenger door with material NO thicker than 1/4". No cage components may be welded to the frame except down bars mentioned above. The front two down bars cannot go past the firewall. Rollover bars must be attached to the 4-point cage, must be vertical and cannot be angled forward or backwards. Rollovers may also be bolted to roof with 5/8 bolts or smaller.

#### **Fuel Tank:**

Metal fuel tanks only! No plastic tanks! No exceptions! Your gas tank MUST be mounted inside the gas tank protector. If you are using an electric fuel pump you MUST have a lighted switch. NO exceptions! Fuel leaks of ANY kind will not be allowed or tolerated!! Make sure your tank, tank fittings, and fuel lines are snug and secure. Absolutely NO ratchet straps to hold the tank down. Tank MUST be bolted or chained, or you will NOT participate!!!

#### **Fuel Tank Protector:**

The gas tank protector can be as wide as the inside of the bed and stop at the front of the wheel wells in the bed. It can be bolted or welded to the frame in two spots total.

#### **Battery Boxes:**

Two automotive batteries can be used but must be secured and covered inside the driver's compartment of the truck.

#### **Core Support:**

Core support cannot be moved from the factory location. It must stay bolted to fenders in the same way it came from the factory. You may replace core support bolts with 5/16" bolts and washers but only using the number of bolts it had from the factory. Your core support spacers may be NO larger than 3x3 square tubing 1/4" thick. Tubing may pass through the core support. It may run from the top side of the core support. 1" all thread may be used for the core support body mount and may be welded to the frame or back of the bumper.

#### **A-Arms:**

You can use two straps of 2"x6"x1/4" per A-Arm. Must go from the top A-Arm to the spring pocket ONLY! You cannot have kickers to the frame behind the A-Arms!

#### **Steering Components:**

You may use aftermarket spindles, ball joints, tie rods, drag link, and steering columns. Hydraulic steering is allowed.

#### **Leaf Spring Front End:**

You can have a piece of 2"x3"x 1/4" thick tubing from the axle to the side of the frame and only a 2' weld on the front and back side of the tubing to the frame. (This is your A-Arm strap.)

#### **Rear End:**

Any rear end 8-lug may be used and can only be chained in two places. May have 2, (one per frame rail) no bigger than 2 1/2" x 2 1/2" box tubing or pipe. Frame to rear end can be welded.

#### **Rear Suspension:**

Factory leaf spring trucks & SUV's, the leaf springs must be stock and made of stock leaf spring material. You may only have a total of 9 leafs per side and no thicker than 3/8" thick. You are allowed 6 clamps per side with only 4 of the clamps being homemade.

Homemade clamps cannot exceed 2"x 2"x 1/4". Factory coil spring trucks & SUV's, you can change springs to a stiffer spring to achieve desired height. Do not raise suspension in any other way. You can chain, bolt, or wire the coil springs to the rear end to prevent the spring from falling out. The control arms can be reinforced or replaced with tubing no larger than 3"x3" square tubing. Watts link conversion kits are allowed made with material no thicker than 1/4".

NO HOMEMADE LEAF SPRING HANGERS! MUST BE FACTORY HANGERS! (THEY CAN BE WELDED TO THE FRAME.)

#### **Front Bumpers:**

Front bumpers can be homemade. On a homemade "pointy" bumper the point may be no longer than 13" from the back of the bumper to the front of the point and no more than 8" tall. Point must be contoured from frame rails. The bumper height maximum is 29" to the top of the bumper.

FIRST OPTION FOR MOUNTING BUMPER: You may use the original shock tube. It may be welded to the frame. May only be welded 10".

SECOND OPTION FOR MOUNTING BUMPER: You can have a shock tube 10" long, 3x3x1/4" thick from bumper back welded to frame.

#### **Cabs:**

May be bolted to the bed with two bolts per side and may also be welded to bed sides.

#### **Hoods:**

You can use 6 pieces of 3/4" all thread to bolt the hood down. This does not include the All thread that runs through the core support. You may use no more than 20 bolts in the hood no bigger than 3/8" diameter to hold sheet metal of the hood together.

HOODS MUST GO THROUGH INSPECTION WITH THE CAR AND MUST BE UNFASTED AND READY TO INSPECT!!!

#### **Fenders:**

You may use 10 bolts 3/8" in diameter per wheel on front and back. No skinning or added support of any kind allowed.

#### **Doors:**

Doors can be welded solid all the way around with no bigger and 4"x 1/4" from sheet metal to sheet metal. Front doors may be plated inside and out. If door is plated on the outside, door seam to door seam only 1/4" thick. If the door is plated inside, it may go from the sidebar to sheet metal only and no wider than the door seams.

#### **Window Bars:**

Front Window: For safety, all cars must have 2 window bars extending from the roof to the firewall. The strap cannot be any larger than 3/8"x 3" flat strap and must be at least 14" apart at the firewall. These straps must not come in contact with the dash bar or rollover bar in any way. These straps cannot be connected in any way unless your firewall is cut out.

Rear Window: Can have a mesh guard behind the driver's head.

#### **Body Shaping:**

You may only crease/shape front fenders and rear quarter panels.

#### **Body Mounts:**

Maximum of 1" All thread/bolts are allowed for body mounts. Plates for the body mounts may be no larger than 4"x 4"x 1/4" plates. 1 extra

# BUSH GARAGE

## Machine & Balancing

Precision Automotive & Diesel Engine Machining & Computer Balancing

Engine Balancing	Decking Blocks and Heads
Custom Engine Building & Customizing	Crankshaft Polishing
Complete Head Rebuilding	Torque Plate Boring & Honing

**AMSOIL Dealer**

Motorcycle Engine Boring and Balancing

Mike Bush Antique Engine Collector	201 Mitchell Robinson, IL 62454 Phone & Fax 618-544-8254
---------------------------------------	--

- 100% of the entry will go to the purse. If we fill all 12 teams that is a guaranteed \$3000 purse. Plus, we are working on more money and sponsors.
- Camping will be limited with no electric hookups. You will have to use a generator.



## 2023 LAWNMOWER DEMOLITION DERBY

### RULES & REGULATIONS

#### STOCK MOWERS

#### MOD MOWERS

(Payout will BE 100% PAYBACK)

July 29, 2023

#### TRACK RULES

1. Drivers must be over the age of 13. Drivers under 18 must have their parent/guardian present at sign in.
2. No laying on or across the hood trying to repair or start mowers while on the track.
3. Track will be wet!
4. A mower is out on its second rollover, catches fire, or touches any other driver or mower.
5. NO ONE is allowed to leave their mower UNLESS an emergency occurs or is permitted by an official.
6. If your mower dies, you will have 60 seconds to restart and make contact. This is also at the official's discretion! Put on a show and we may give you more time. Sandbag or Gangbang and time will be less.
7. Under RED FLAG conditions all activity ceases until and official waves the GREEN FLAG to restart. Only one warning anymore and you will be disqualified.
8. The Head Official has the right to disqualify ANY mower for safety concerns.
9. Any driver or crew member disobeying the rules will cause his or her vehicle to be disqualified.  
Drivers are responsible for the actions of their crew.
10. There will be a 15-minute time limit on each heat. If no winner by then 1st place will go to the hardest hitter.

#### 2023 Stock Mower Rules

##### Frame:

1. 4, 4x4 plates 1/4" thick.
2. Plates can run concurrently.
3. 4" bumper mounts (tubing, flat metal doesn't matter your choice but only get the 4").
4. 12"x12" engine plate 1/8" thick max
5. Craftsman's can close exhaust hole 1/8" max material and there must be a gap between engine plate.

body mount per rail is allowed inside the driver's compartment of the car.

#### Tailgate:

May be welded standing up or laying down. (LEAVE INSPECTION HOLE IN THE TAILGATE) You can add 6 all threads to the tailgate and bed to help hold it in place, 1" diameter all thread maximums. The washer can be no bigger than 4x4x1/4" thick (tailgate plates).

#### Rear Bumpers:

Back bumpers can be homemade. No bigger than 6x6 square tubing, rectangle, or pipe. If you are using tubing for the bumper, it must be STRAIGHT WITH NO POINT!!! Rear bumper height minimum is 13" from the ground to the bottom of the frame or bumper. Will be measured from the closest point to the ground.

FIRST OPTION FOR MOUNTING BUMPER: You may use the original shock tube. It may be welded to the frame and the length of the shock tube.

SECOND OPTION FOR MOUNTING BUMPER: you can have a shock tube 10" long, 3x3x1/4" thick, from the bumper back, welded to the frame.

#### Tires:

Any 19.5" tire or smaller may be used. No studs in the tires. No wheel weights and no split rims AT ALL!!!

## 2023 Team Derby Info. Mini Trucks

- 2 person teams. 12 teams max Mini Truck Rules!
- \$250 per team entry.
- Trucks may be pre-ran!
- Friday July 28, 2023, will be heats. ALL winning team cars will be impounded and locked in a secure place following the heats and released the next morning at 7:00a.m. They MUST be through re-inspection by 5:30p.m. on Saturday!
- Saturday July 29, 2023, heat winners will run the feature.
- With this being a county fair and time limited we will not have a B-main. However, ALL losing team trucks from heats will be able to come back and enter the one shot show on Saturday. \$40 entry fee.
- Pre-registration ONLY!! Registration will open January 29, 2023, at 5:00pm and close on February 12, 2023, at 5:00pm. I will make a post on our Facebook page (Oblong Derby Info.) on January 29, 2023. We will be taking 12 teams. It will be FCFS! Comment on the post on January 29, 2023, and you will be contacted in order as commented, NO Private Messages, Text Messages, or Phone Calls! We are doing it this way so it is public, and everyone can see, and no one is missed! Once you have commented I will then message you on Facebook for information and give you further information on payment! Even though you see there have been 12 teams comment go ahead and comment because lack of payment will forfeit their spot and we will move on to the next person! Payment must be paid at the time the team commits to the spot. When I contact you via messenger on how to make the payment the only one that I need to comment back to is the captain for that team. That will be the one I will be in contact with for all the other team members' information.

6. 2-1" all thread in front to hold the hood.
7. Your allowed 4" of tubing to help mount all thread.
8. All thread can have metal between them 4" wide max.
9. Bumper no taller than 6" and no wider than the outside of the wheels and can run a point but no bigger than 6" out.
10. No kickers/bars going from the front bumper to the cage.

**Cage:**

1. Any metal of choice,
2. 3 Points of contact per side.
3. You can run a safety loop behind the fenders and cage and can bolt it to the fenders.
4. We are running points so protect your legs!

**Body:**

1. Any body of choice.
2. Must have a factory hood and fenders.
3. Back of the hood can mount in any way just don't go excessive with it.
4. Seam welding of the hood is ok.
5. No Seam welding of the dash to the frame.

**Drive Train:**

1. Any ¾ rear axle.
2. Any pulleys.
3. Motors must be 25hp or less.
4. Building motors is allowed but must start with 25hp or less.
5. Any tires and wheels. No bead locks.
6. Headers are allowed. They must point in an upright position.

**Safety Rules**

1. Driver must wear shirt, long pants, and closed toe shoes while on the track.
2. Helmets must be worn at all times while on the track.
3. Drivers must be over the age of 13. Drivers under the age of 18 must have parent/guardian present during registration.
4. Age verification is required. (driver's license, state ID, Birth Certificate, etc.).

**2023 Mod Mower Rules**

**Safety Rules**

1. Driver must wear shirt, long pants, and closed toe shoes while on the track.
2. Helmets must be worn at all times while on the track.
3. Drivers under the age of 18 must have parent/guardian present during registration.
4. Age verification is required. (driver's License, State ID, Birth Certificate, etc.).

**Mower Rules**

1. Only front engine riding mowers allowed. Must be belt driven.
2. NO ZERO TURN MOWERS ALLOWED.
3. Max of 25HP. Vertical shaft ONLY.
4. Seats must be secure.
5. Mower decks must be removed.
6. Mowers must have adequate leg protection.
7. No "jagged" bumpers allowed. Pointy bumpers will be allowed. No bigger than 8" point and no wider than the wheels.
8. No lawn tractors.
9. Spark plug and carburetor guards are allowed.
10. Must have a flywheel cover or metal hood. No plastic grills.
11. Battery and fuel tank CANNOT be in front of the motor and MUST be secured properly.
12. Wheels no smaller than 6".
13. Wheels must be open to hits. No dual rear wheels, wheel covers, wheel weights or tire chains.
14. Pully swapping is allowed and highly encouraged!



## 2023 POWER WHEELS DERBY

**RULES**

Event will be Friday, July 28th, 2023

Power Wheel Demo Regulations

1. Two age groups- 3,4,5 and 6,7,8
2. Entries start at 5pm, derby scheduled for 6:00pm
3. Any regular electric Power Wheel is allowed. No 4-wheeler or tractor type vehicle allowed.  
Childs legs must be in the compartment. Ride in NOT ride on!
4. No more than 12-volt system NO CAR BATTERY
5. Helmets must be worn; a bike helmet is ok.
6. NO PASSENGERS
7. Motors must be stock. No modifications to make the car run faster than stock.
8. All doors and tailgates must be strapped shut. No sharp edges. Use zip ties or duct tape.
9. No foam, water, screw, chains, or self-tapers in the tires. Stock tires only.
10. Decorative changes may be made to make the Power Wheel more like a derby car, but no reinforcement can be made to it.
11. Must have a seat belt!
12. No entry fees!
13. ONE PARENT ONLY will be allowed on the track per child during the event.
14. Balloons will be attached by us! The object is to pop the balloons. The last one with the balloon is the winner.
15. Each of the heats will be given a time limit. If at the end of the heat, there is more than one contestant with an un-popped balloon; the heat will be declared as a tie.
16. If a child gets out of the power wheel at any time of the event, that child is out of the event. If the vehicle has more than one speed, low speed must be used.

REMEMBER: This is for the kids! Do not add something that could cause them not to be able to run! This is for fun, Teach them good sportsmanship!!

**Rusty Nail Hardware  
202 West Main Street  
Oblong, Illinois 62449**

**Give your deck a new look with  
Best Look Stain.**

**Now in Semi-Transparent and Solid  
Color Stain.**

**Also Available:**

**Vinyl Shutters and Siding**

**Vinyl Fence and Porch Railing**

**Screen & WINDOW REPLACEMENT**

**Chain Sharpening**

**Key Cutting**

**618-592-3313**

# Goodwine

## Funeral Homes, Inc.

Please visit our website at:  
www.goodwinefuneralhomes.com

Flat Rock  
Palestine  
Robinson

Prust - Hosch Funeral Home in West Union

*Serving Crawford County*

*Since 1926*

Member of  
International Order of the  
**GOLDEN  
RULE**



SELECTED  
Independent  
FUNERAL HOMES  
Member by Inclusion

Serving Crawford  
County Since 1926



## Go Kart Racing

Wednesday, July 26, 2023

Race starts at 7:00 pm

Superintendent - Mike Brown 562-7127

Entry Fee \$25.00 except Jr Classes - No Fee

Pit Pass \$20.00

**Sponsored in part by**  
2023 Rules & Classes !!!

### General Rules:

All junior drivers must be accompanied by an adult. All drivers must wear helmets with shield or goggles, long sleeves, long pants, neck brace, gloves, & closed toed shoes. Hoods should be tucked in and long hair tied and tucked in for safety. All classes except SBO are open to tech checks. All karts must be flat karts with bumpers on the front and rear, as well as nerf bars (bumpers) on each side, karts will also need a visible number on the front or right side of the kart.

### Jr. 1:

**Ages 10 & Under**

Green restrictor plate 0.425

265 lbs minimum

OR

Red restrictor plate 0.375

250 lbs minimum

May run clone or predator

10.8 lb valve springs

**Jr. 3:**

**Ages 10 -15**

Blue restrictor plate 0.550

320 lbs minimum

OR

Purple restrictor plate 0.500

290 lbs minimum

May run clone or predator

10.8 lb valve springs

Box Stock (Predator 212 Only)

350 lbs minimum

Drum style clutches only

Slick tires only

May add clutch/ chain guard

May add side mount throttle linkage plate

May remove throttle stop screw

May drill vent hole in gas cap

Gasoline only 87 octane

No other modifications allowed

Must pass engine RPM rev test. 5600 for Hemi, 6100 non-hemi

**Super Stock**

!! \$400 Claim Policy !!

350 lbs minimum

May run any 6.5 hp style engine block

Must run 22 lb valve springs max

Max carb venturi size of 0.615

Max main jet of 0.039

Must run on gasoline

Open clutch/ tire rules

Claim Policy:

If you win a feature event, immediately following the race, last place to second place will have the option to claim your engine for \$400 no engine swap. If you do not have anyone claim your engine you are still subject to tech check following the rules above. If someone does claim your engine, you will get \$400 and will be allowed to keep your clutch and clutch guard. If you have custom valve cover or blower housing, you may keep those as well if you can provide stock replacements. If you deny a claim on your engine, you will be disqualified from further participation in the Super Stock Class.

**Small Block Open**

350 lbs minimum

Open engine, clutch and tire rules

Must be able to keep pace with the field and race safely

**Ladies Class (for fun)**

Girls and Women

Small block open rules (may use any class engine)

Must be able to keep pace with the field and race safely

**50+ Class (for fun)**

Driver must be 50 years or older

Small block open rules (may use any class engine)

Must be able to keep pace with the field and race safely

Season points will be kept track of for the 5 main classes:

Jr 1, Jr 3, Box Stock, Super Stock, and Small Block Open.

Points will be the best 7 finishes out of the 10 scheduled races, including the county fair races at Lawrence, Crawford, and Richland Counties. If there is a regular race at MB33 cancelled, the points will be best 6 of 9.



## Miss Crawford County Fair Queen Pageant

Saturday July 22nd, 2023 7:00PM  
 Directors: Michelle Weger & Kaleigh White  
 618-554-0562 | 618-554-4344  
 Instagram: @misscrawfordcountyfair  
 Facebook: Miss Crawford County Queen Pageant  
 Venmo: @misscrawfordcountyfair  
 Entry Fee: \$100

### Rules & Regulations

- Contestant must be 16 years of age by July 22nd, 2023 and not have reached their 22nd birthday by January 1st 2024
- Registration opens April 3rd, 2023 - June 1st, 2023. Online Google doc application, link to application available on Instagram or Facebook
- We will have mandatory weekly practices leading up to the pageant held at the Crawford County Fairgrounds
- First practice June 1st at 5:30pm at the Crawford County Fairgrounds
- Mandatory dress rehearsal will be held on Friday July 21st, 7:00pm
- \$100 registration fee due by June 1st at first practice. We encourage contestants to choose a sponsor (local business, employer, family, etc.) to sponsor the fee. Sponsors are announced on pageant night. One pageant t-shirt is included for Miss contestants.
- Cash, Check (to Miss Crawford County Fair Queen Pageant) or Venmo (@misscrawfordcountyfair)
- Contestant must attend OR be a graduate of a Crawford County high school (Hutsonville High School, Oblong High School, Palestine High School, Robinson High School)
- Contestant must never have been married or had a marriage annulled
- Contestant must be born a female and have always been a female
- Contestant cannot have had a child and must never have been pregnant
- Contestant cannot be convicted of a felony or misdemeanor offense
- Contestants will limit themselves to one piercing in each earlobe during competition season. All other visible piercing – ear or body – must be removed during practices, pageant night, and if she is crowned Miss Crawford County - during all official appearances. All visible tattoos must be covered with clothing or body makeup during practices, pageant night, and if she is crowned Miss Crawford County - during all official appearances.
- Contestant agrees not to make any alterations to her appearance (i.e. piercing, tattoos) until after this pageant on July 22, 2023
- Contestant agrees to attend practices scheduled by the pageant directors. A maximum of two practices may be missed for illness, conflict with work, or previously scheduled vacation. If a contestant misses more than two practices, she will be disqualified and \$100 entry fee will be forfeited
- It is the contestant's responsibility to practice and prepare on their own outside of in-person meetings. This includes practicing interview questions, writing and practicing your speech, walking in your heels/wardrobe etc.
- Cell phones will be put away at practices. All practices are closed - No public attendees, friends, or family members are permitted to

attend

- Any official reports of moral misconduct or unfair behavior of a contestant during the practice and competition season may result in immediate disqualification and \$100 entry fee will be forfeited
- Contestants must refrain from drinking alcohol, using any type of recreational drugs, or smoking. Any of this behavior will result in immediate disqualification from the competition and \$100 entry fee will be forfeited
- Contestant's social media accounts (Facebook, Twitter, Instagram) can be reviewed by the pageant directors at any time. Please use caution when posting pictures and be mindful of your comments and other's comments on your posts. Anything inappropriate that is brought to our attention may result in immediate disqualification from the competition and \$100 entry fee will be forfeited
- During the judged pageant, the contestant must agree to:
  - Be personally/privately interviewed for 4 minutes by a panel of 3 judges. Contestant is required to wear a business dress, two-piece business suit, or pantsuit/jumpsuit
  - Present a speech on a topic of the contestant's choice for judging on stage. Max length of 60 seconds. No poems, singing, or rhyming allowed
  - Answer an on-stage, pop question for judging
- Model on stage in a floor-length evening gown. Shoes must be open-toe and appropriate for dress style. Can be any color, but silver, gold, clear, or a color matching the dress are recommended. Slits in gowns must be no higher than 5 inches above the top of the knee. No Vs or necklines lower than the nipple line. No high-low hems, the gown must be floor length in the front and back. No two-piece gowns. No jumpsuits/pantsuits. Front bodice and side panels of the gown must be solid fabric – no see-through material. Jewelry of contestant's choice allowed
- All wardrobe (shoes, jewelry, clothing) will be approved by pageant directors before final decisions are made
- We suggest renting or borrowing items to minimize costs
- All contestants must agree that the decision of the judges is final at the end of the competition

## Little Miss Crawford County Fair Queen Pageant

Saturday July 22nd, 2023 7:00PM  
 Directors: Michelle Weger & Kaleigh White  
 618-554-0562 | 618-554-4344  
 Instagram: @misscrawfordcountyfair  
 Facebook: Miss Crawford County Queen Pageant  
 Venmo: @misscrawfordcountyfair

Entry Fee: \$30

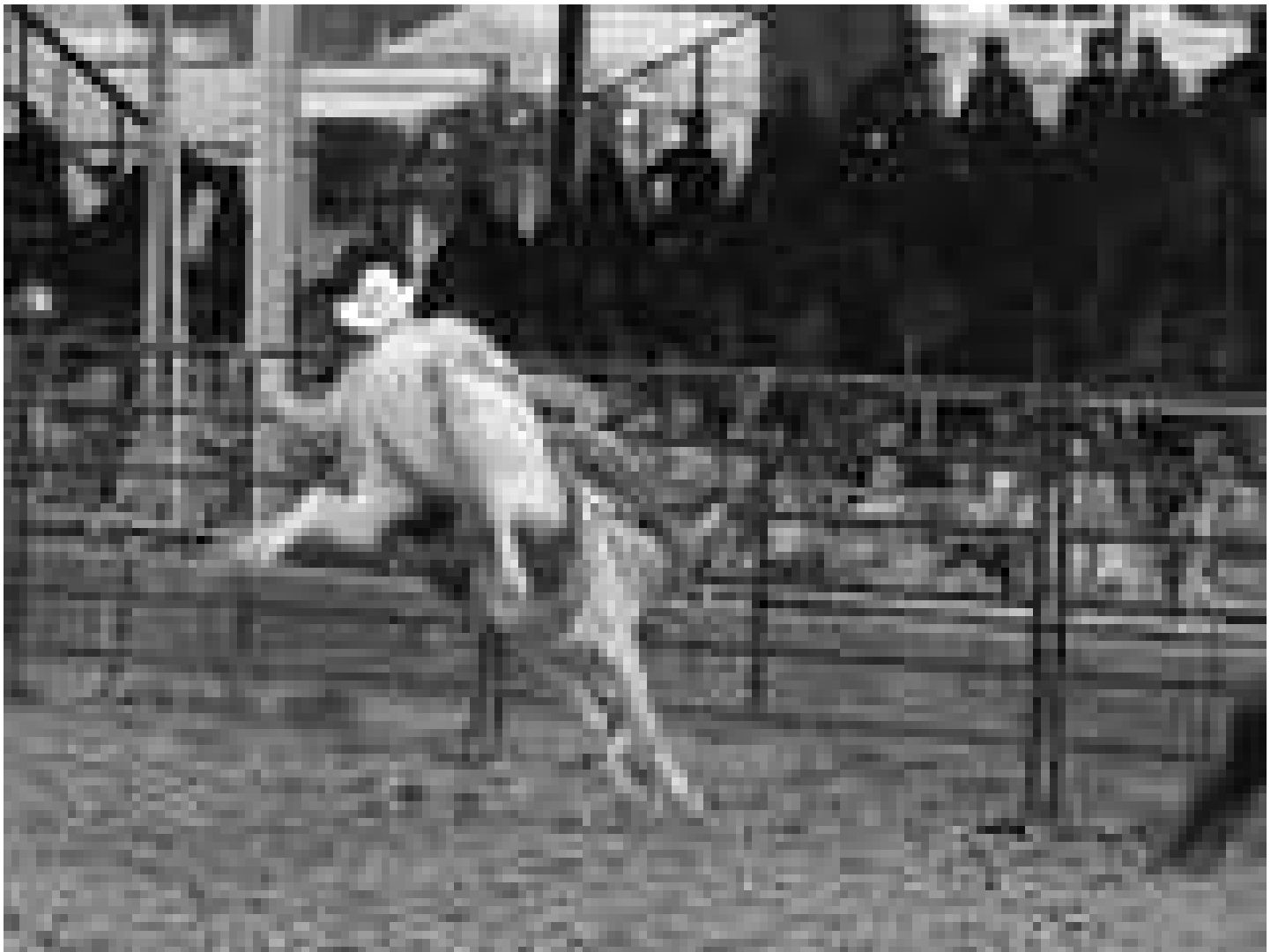
### Rules & Regulations:

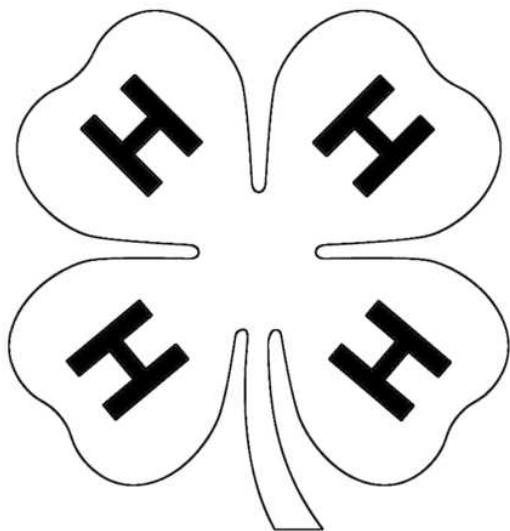
- Contestants must be 4 years of age and not exceed 11 years of age by July 22nd, 2023
- Contestant must be born a female and have always been a female
- Contestant must attend a Crawford County school or have a parent/guardian that resides in Crawford County
- Registration open June 1st - July 1st, 2023
- The link to the online form available on our Instagram or Facebook. Entry fee (\$30) due at time of registration (includes a pageant t-shirt for contestant to wear on the night of the pageant). Please mail cash or check to Michelle Weger 8688 State Highway 1 Robinson, IL (checks made to: Miss Crawford County Fair Queen Pageant) or Venmo @misscrawfordcountyfair
- Contestants are required to attend dress rehearsal on Friday July 21st, 2023 at 5:30pm-7:00pm - they will learn stage lineup order and the dance
- All Little Miss Contestants will perform a fun dance in their pageant t-shirt and model in their favorite dress on stage
- This pageant will not be judged and each contestant will receive prizes for participating



# Class Z Rodeo

**T&A Bucking Bulls**  
Thursday, July 27, 2023  
7:00 PM





4-H SHOW SCHEDULE  
CHECK OUT THE CRAWFORD COUNTY  
FOR ADDITIONAL 4-H INFORMATION.  
[HTTP://WEB.EXTENSION.ILLINOIS.EDU/CCE/](http://web.extension.illinois.edu/cce/)

Thursday, July 20

All General Projects Judging – Registration begins at 4:30 p.m. and Judging at 5:00 p.m.

Friday, July 21

Horse Show – 5:00p.m. – All exhibitors should be signed in by 4:30 p.m.

Sunday, July 23

Poultry Judging 2:30p.m.

Dog Show - Show ring 5:00p.m.

Monday, July 24

Swine Show – 9:00 a.m.

Tractor Driving 2:00p.m.

Rabbit Show (Show Ring) – 3:00 pm

Tuesday, July 25

Dairy Show – 7:30 a.m

Sheep Show – 9:00 a.m.

Goat Show – following the sheep show

Wednesday, July 26

Beef Show – 9:00a.m.

Master Showmanship (Show Ring) 3:00p.m.

Thursday, July 27

Auction Set up – 9:00 a.m.

Livestock Auction – 1:00p.m.

Exact times and final schedule information are included in the July 4-H newsletter.

#### CRAWFORD COUNTY 4-H PROGRAM YEAR:

The 4-H year begins on September 1 and ends on August 31. Enrollment is open to 4-H members throughout this period. To qualify for exhibiting at the 4-H Fair, members are required to attend at least 3 club meetings and 1 county event. (Members who attend college, are required to attend one club meeting and 1 county event.)

#### MEMBERSHIP:

(Condensed version of rules for 4-H members in Crawford County. Additional membership rules found in Crawford County 4-H Handbook)

1. Any boy or girl, regardless of race, creed, or color, who is in the third grade or eight years of age by September 1st or who has not yet reached his/her 19th birthday on September 1 of the current 4-H year may be a member of a 4-H club, hold club office, participate in county 4-H fairs and events, and participate in the 4-H awards program.
2. Any boy or girl who is 5-7 years of age on September 1st of the current 4-H year may participate in 4-H as a Cloverbud member. However, they may not receive 4-H premium monies, participate in the livestock auction, or be selected as a state fair delegate.
3. Mentally handicapped individuals may participate fully in the 4-H program regardless of their chronological age.
4. A member may enroll in only one county, and should receive 4-H premium money in that county.

#### 4-H SHOWPOLICIES:

(Condensed version of policies for 4-H'ers in Crawford County. Additional policies found in the Crawford County 4-H Handbook)

1. All 4-H'ers taking projects to be shown at the County 4-H Show must be enrolled in these projects by February 1st of the current year.
2. All projects exhibited at the 4-H show must be made and shown by the exhibitor within the current 4-H year (September 1-August 31). Any project not made by the exhibitor or not made during the current 4-H year will be disqualified.
3. All projects must be of an A rating to qualify for a champion or State Fair competition.
4. Premiums are paid to exhibitors in accordance to the IDOA premium scale.
5. Any exhibitor who wants to protest an entry or decision must do so within two hours of the judging. A written protest must be given to the 4-H show superintendent. The Crawford County 4-H Youth Council will render a decision.
6. The County 4-H Youth Council reserves the final and absolute right to interpret all 4-H Show Rules and Regulations.

#### PROJECT INFORMATION:

The following premiums (based on monies available from IDOA funding) will be paid in the various project areas: ANIMAL PROJECTS: A- 3X, B - 2X, C - 1X. (The dollar amount of "X" to be determined at a later date)

#### GENERAL PROJECTS:

Include all projects that fall under the following categories: Communications, Photography, Child Care, Clothing, Interior Design, Foods, Citizenship, Leadership, Visual Arts, Intercultural, Aerospace, Bicycling, Electricity, Small Engines, Tractor, Woodworking, Computer, Robotics, Welding, Entomology, Forestry, Geology, Natural Resources, Crops, Horticulture, Plant and Soil Sciences, Health and Safety- A - 3X, B - 2X, C - 1X. (The dollar amount of "X" TBD at a later date.)

**QUEEN  
and  
LITTLE MISS  
PAGEANT  
Saturday, July 22, 2023  
7:00 p.m.**

**GO-KART RACING  
Wednesday, July 26, 2023  
7:00 p.m.**

**GOSPEL SHOW  
Williamson Branch  
Sunday July 23, 2023  
7:00 p.m.**

**Rodeo  
T & A Bucking Bulls  
Thursday, July 27, 2023  
7:00 p.m.**

**PIG SCRAMBLE  
Monday, July 24, 2023  
7:00 P.M.**

**Friday, July 28, 2023  
Demo Derby - 7:00 P.M.  
Mini Truck Team  
Bone Stock  
Compacts  
Chain and Wire  
Stock and Mod Mowers**

**TRUCK PULL  
TRACTOR PULL  
Tuesday, July 25, 2023  
7:00 p.m.**

**Saturday, July 29, 2023  
Demo Derby - 7:00 P.M.  
Mini Truck Team Feature  
Mod Trucks  
Powder Puff  
Mod Cars  
Mini Truck one and done**

Compliments of



Sand & Gravel Producer

WEST UNION  
217-826-2800

PALESTINE  
618-586-5433

Delivery Available